

■ boardwalk framing top view

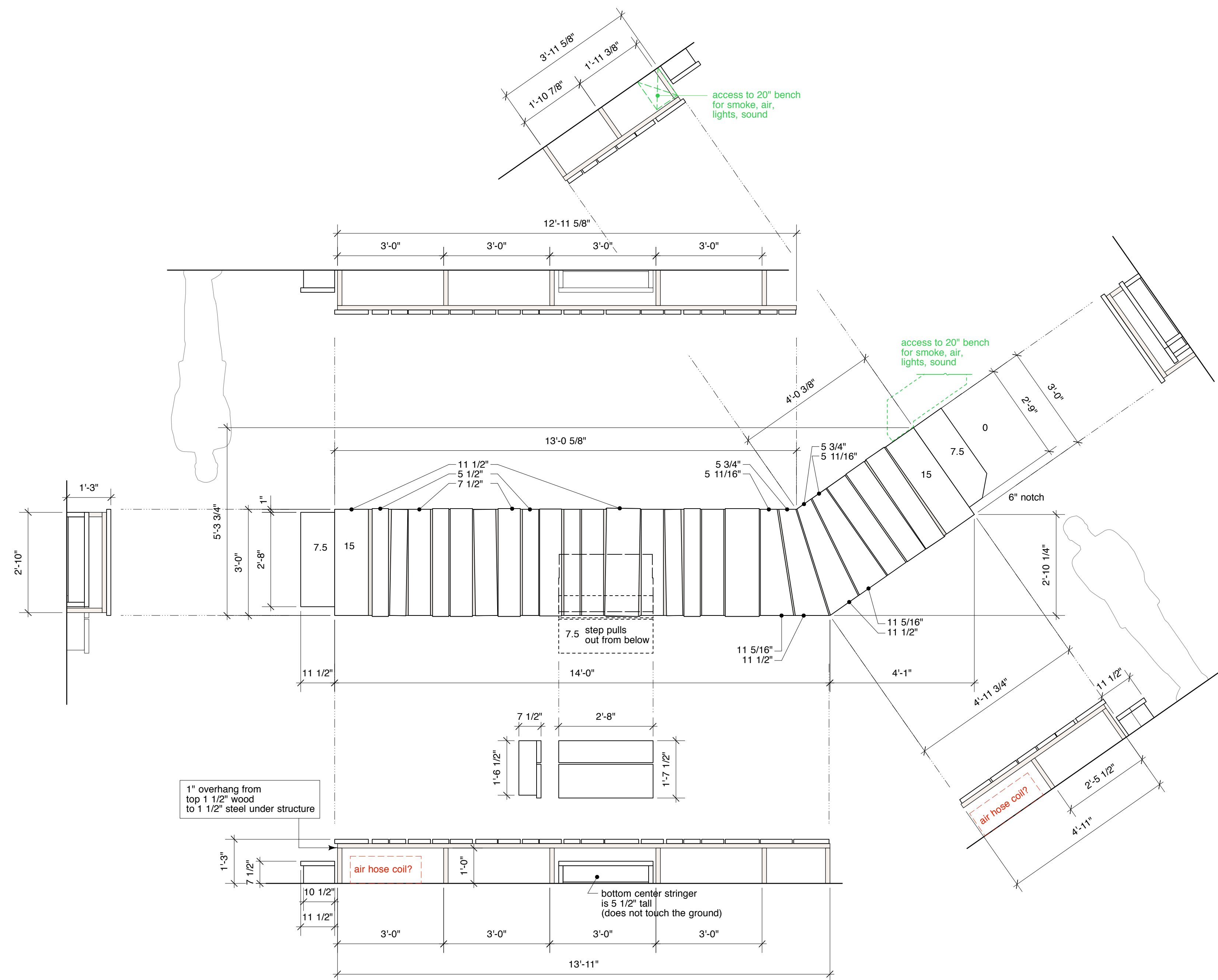
notes about the boardwalk
top is 2x SYP from menards
2" x 12" x 12' #1 SYP Lumber
\$16.05 each
Model Number: 1022170
Menards SKU: 1022170

2" x 8" x 12' #1 SYP Lumber
\$8.72 each
Model Number: 1021909
Menards SKU: 1021909

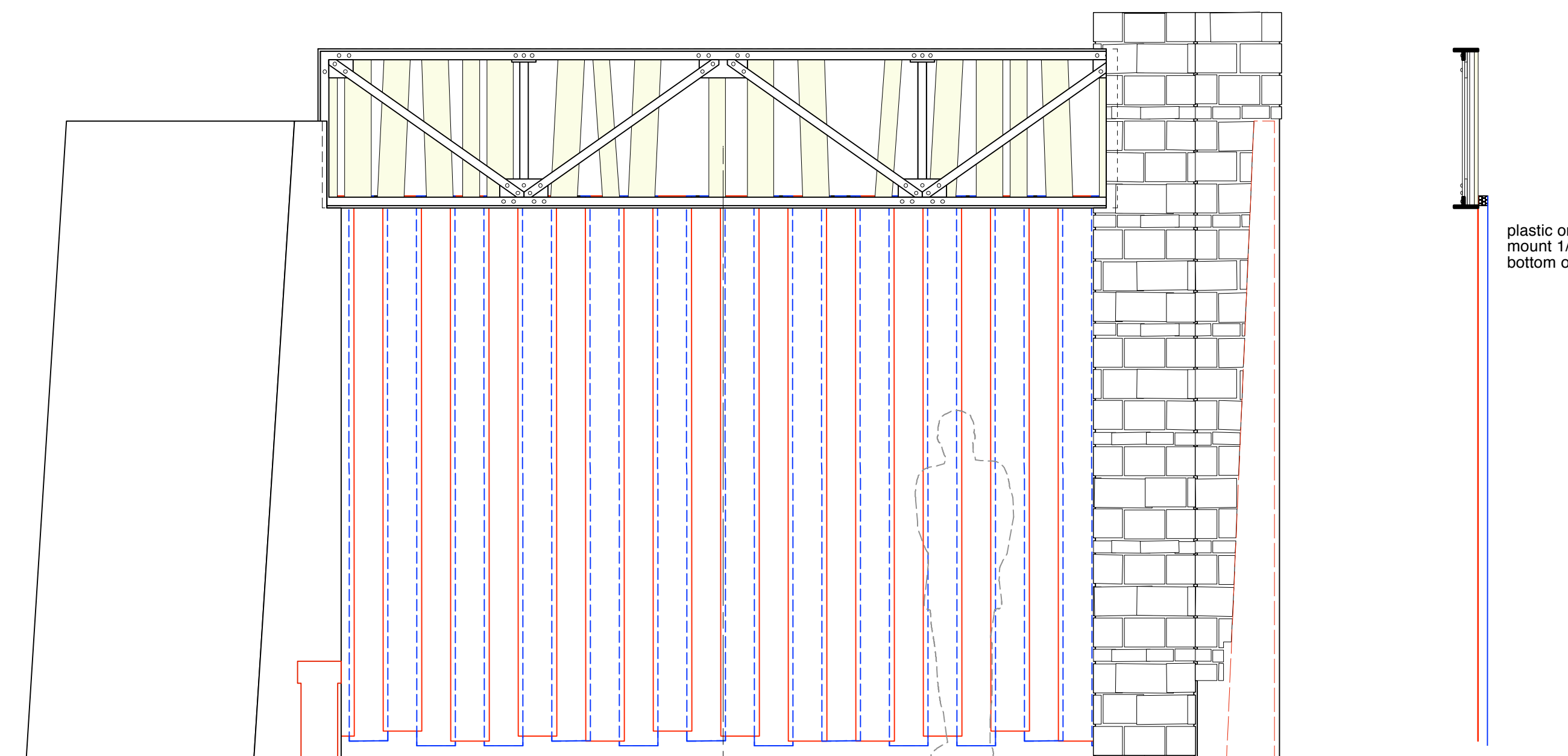
2" x 6" x 12' #1 SYP Lumber
\$8.19 each
Model Number: 1028120
Menards SKU: 1028120

framing & legs are 2" box steel
no visible anchors into deck (as if the steel goes into the concrete below)
under boardwalk, there will be coils of airhoses (practical), lights, smoke, sound etc...
top of wood is distressed, during show a knife is stuck into it

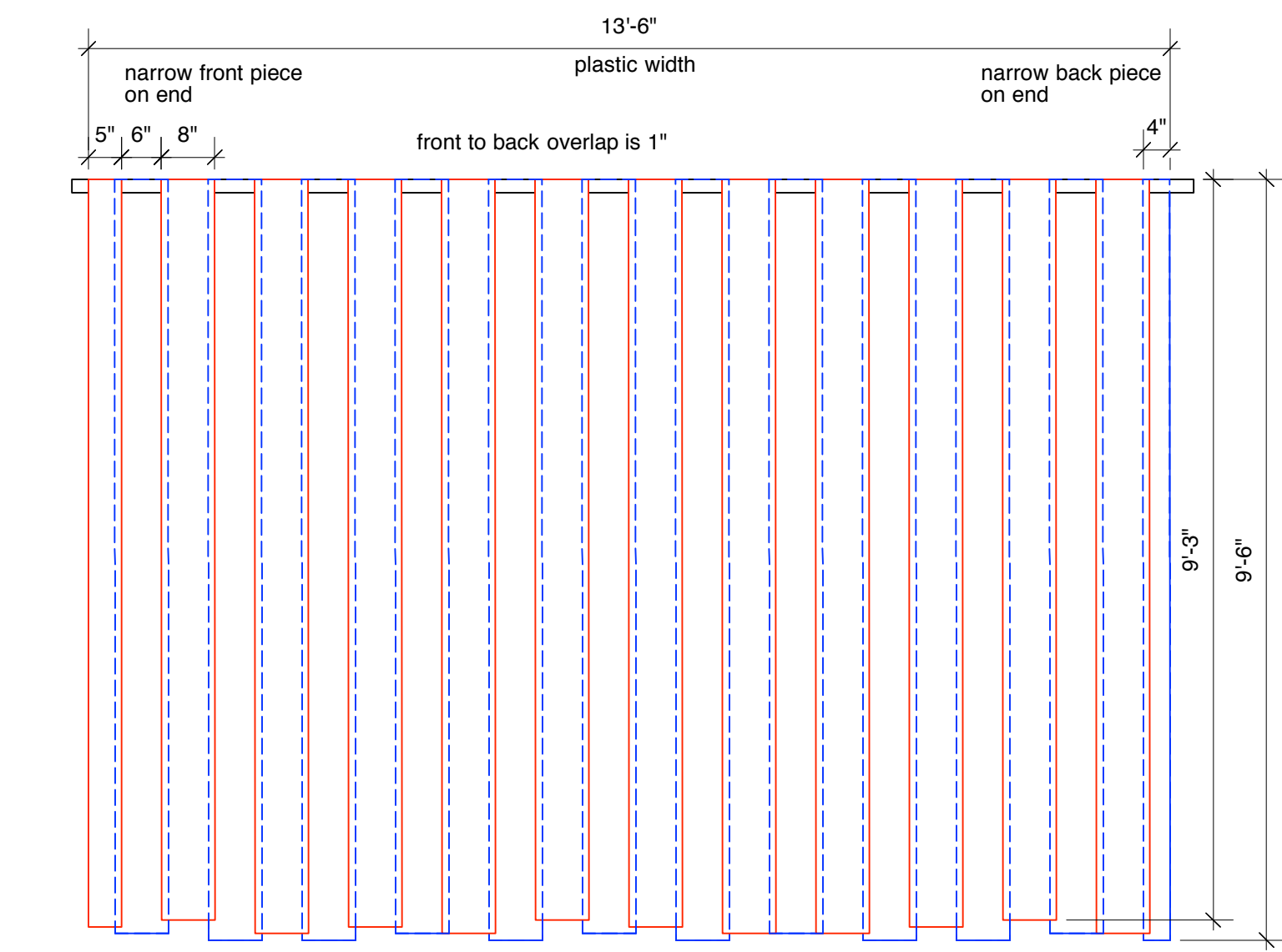
paint
aged wood, a mix of flat & satin finish
metal is....old worn metal w/ rust



■ boardwalk top view & side views



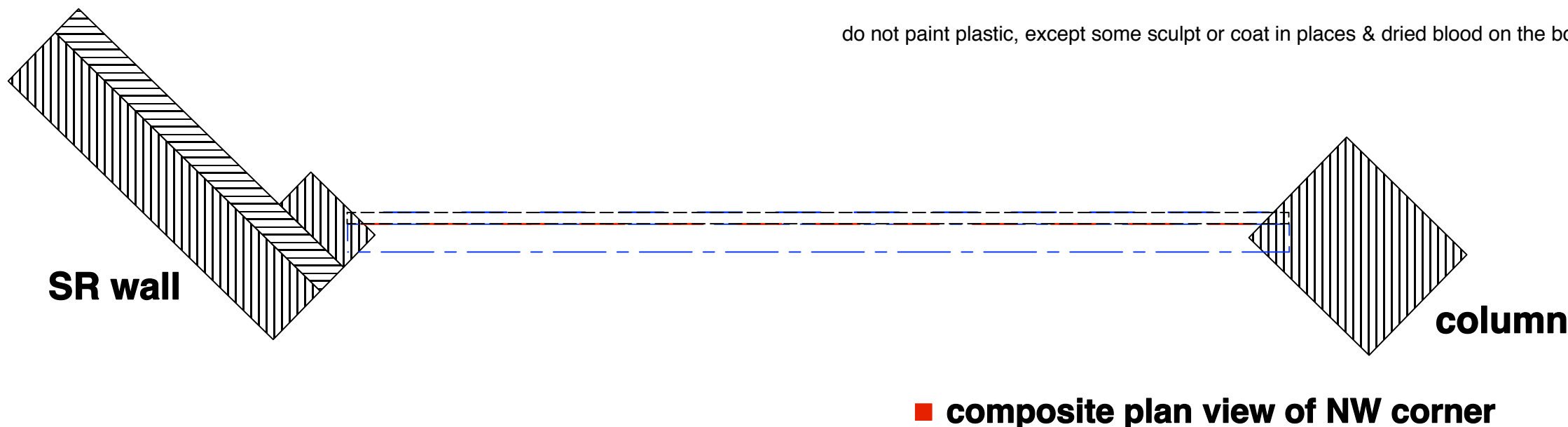
■ composite front view of NW corner ■ section



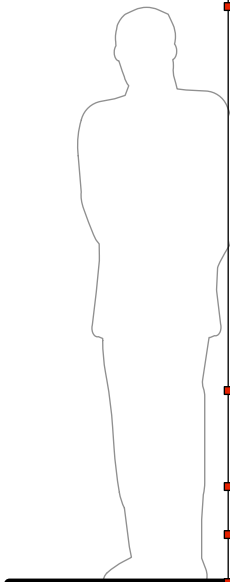
■ front view of plastic

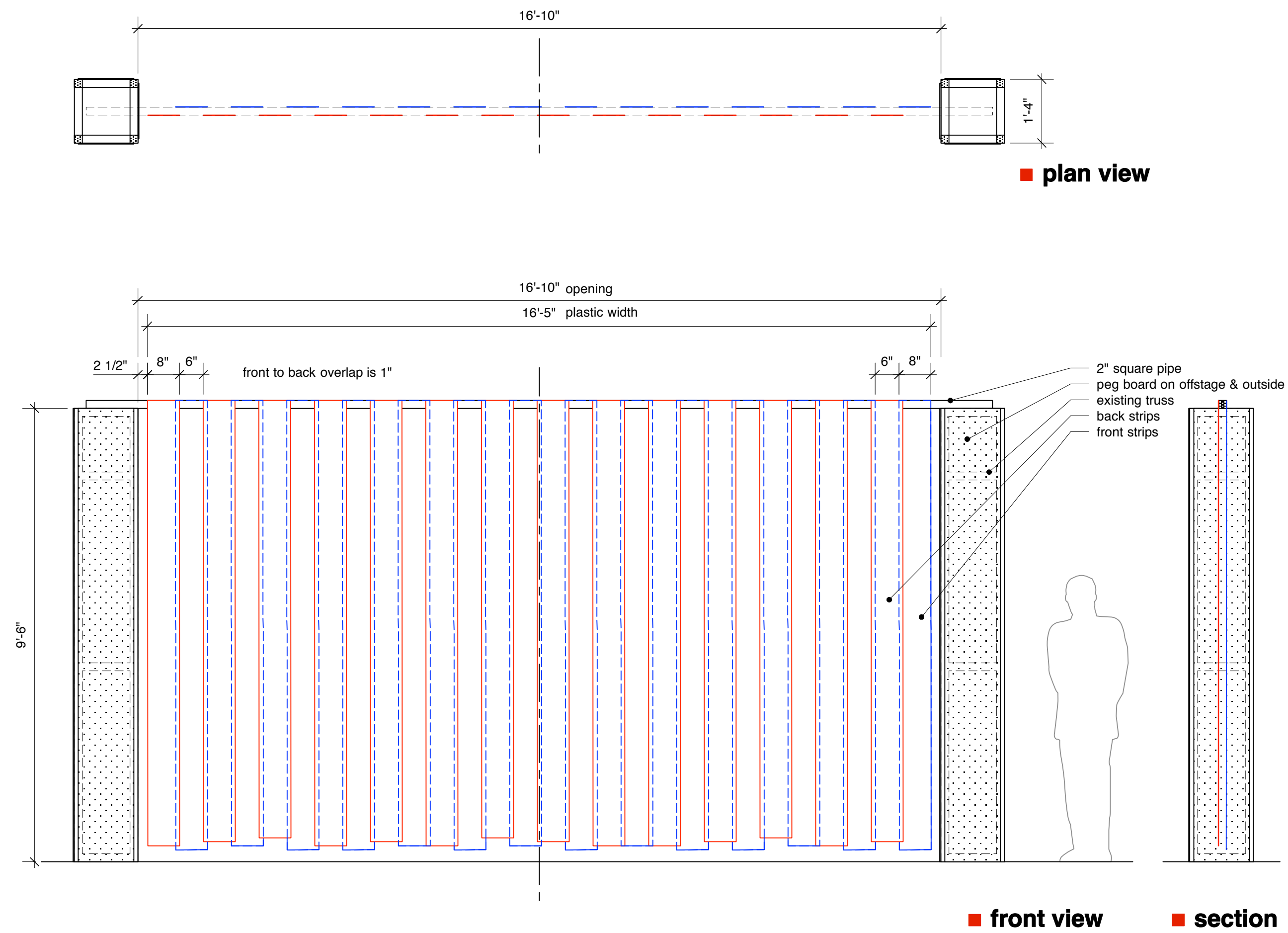
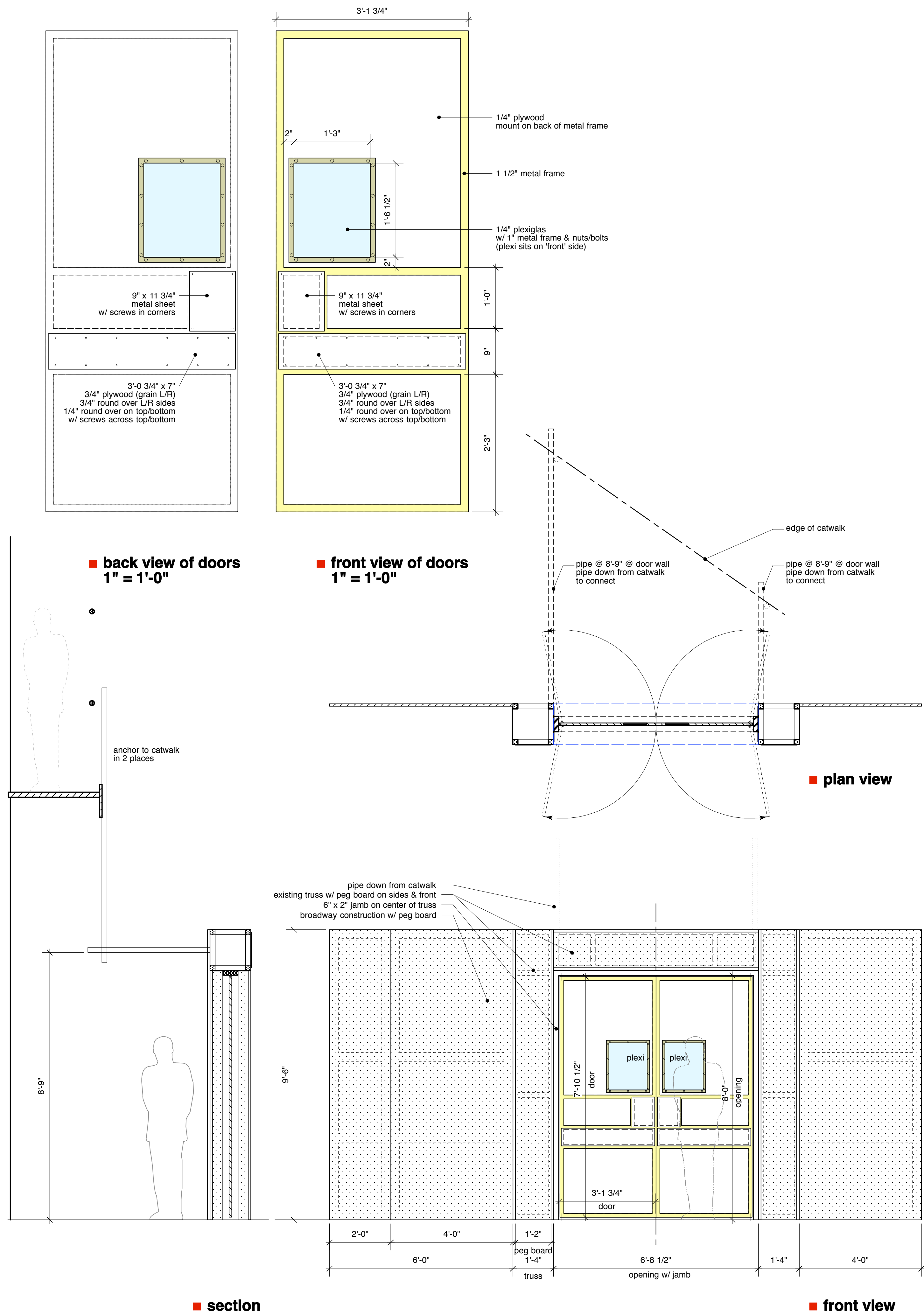
notes about the NW corner plastic
heavy weight plastic sheeting is 8" wide, attached to front & back sides of the 2" top square pipe
plastic height varies from 9'-6" to 9'-3"
age/distress bottom & spot sand to help with ageing
the audience enters/exits through this plastic

do not paint plastic, except some sculpt or coat in places & dried blood on the bottom...



■ composite plan view of NW corner





notes & questions about the SW corner
the trussing is pull/cut down from MAKEOVER, discuss size & adjust design to suit existing steel work
peg board on the outside of truss as noted
on either side of truss are Broadway-style flats skinned w/ peg board
pipe added off the back of the SW corner @ 9'-0", w/ tail down from the catwalk

notes about the doors
the doors hinge in both directions & return to closed position
they will be hit/abused by actors & rolling scenery

paint
these units are dark/aged metal...
do not paint, but do touch up weld/grind marks, seal (flat finish)...and then 'rust'
peg board painted dark, warm metal w/ rust
doors have a worn wood finish w/ aged metal

notes about the SE corner
the trussing is pull/cut down from MAKEOVER, discuss size & adjust design to suit existing steel work
heavy weight plastic sheeting is 8" wide, attached to front & back sides of the 2" top square pipe
plastic height varies from 9'-5" to 9'-2"
age/distress bottom & spot sand to help with ageing
the audience enters/exits through this plastic

paint
these units are dark/aged metal...do not paint, but do touch up weld/grind marks, seal (flat finish)...and then 'rust'
peg board painted dark, warm metal w/ rust
do not paint plastic, except some sculpt or coat in places & let's discuss dried blood on the bottom...

