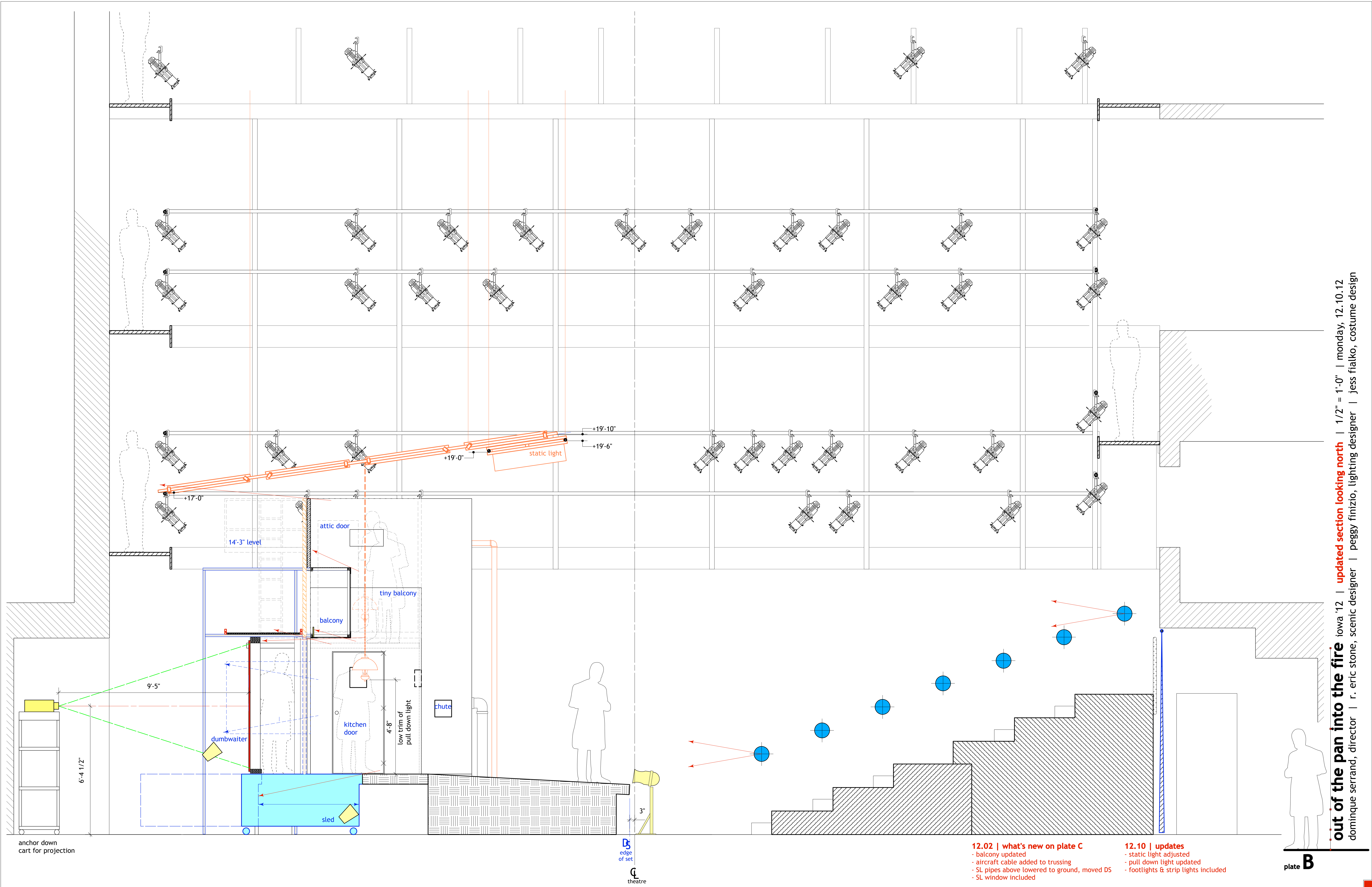


plate A

out of the pan into the fire iowa '13 | ground plan update v.15 | 1/2" = 1'-0" | monday, 12.10.12
dominique serrand, director | r. eric stone, scenic designer | peggy finizio, lighting designer | jess fialko, costume design



out of the pan into the fire iowa '12 | **updated section looking north** | 1/2" = 1'-0" | monday, 12.10.12
dominique serrand, director | r. eric stone, scenic designer | peggy finizio, lighting designer | jess fialko, costume design

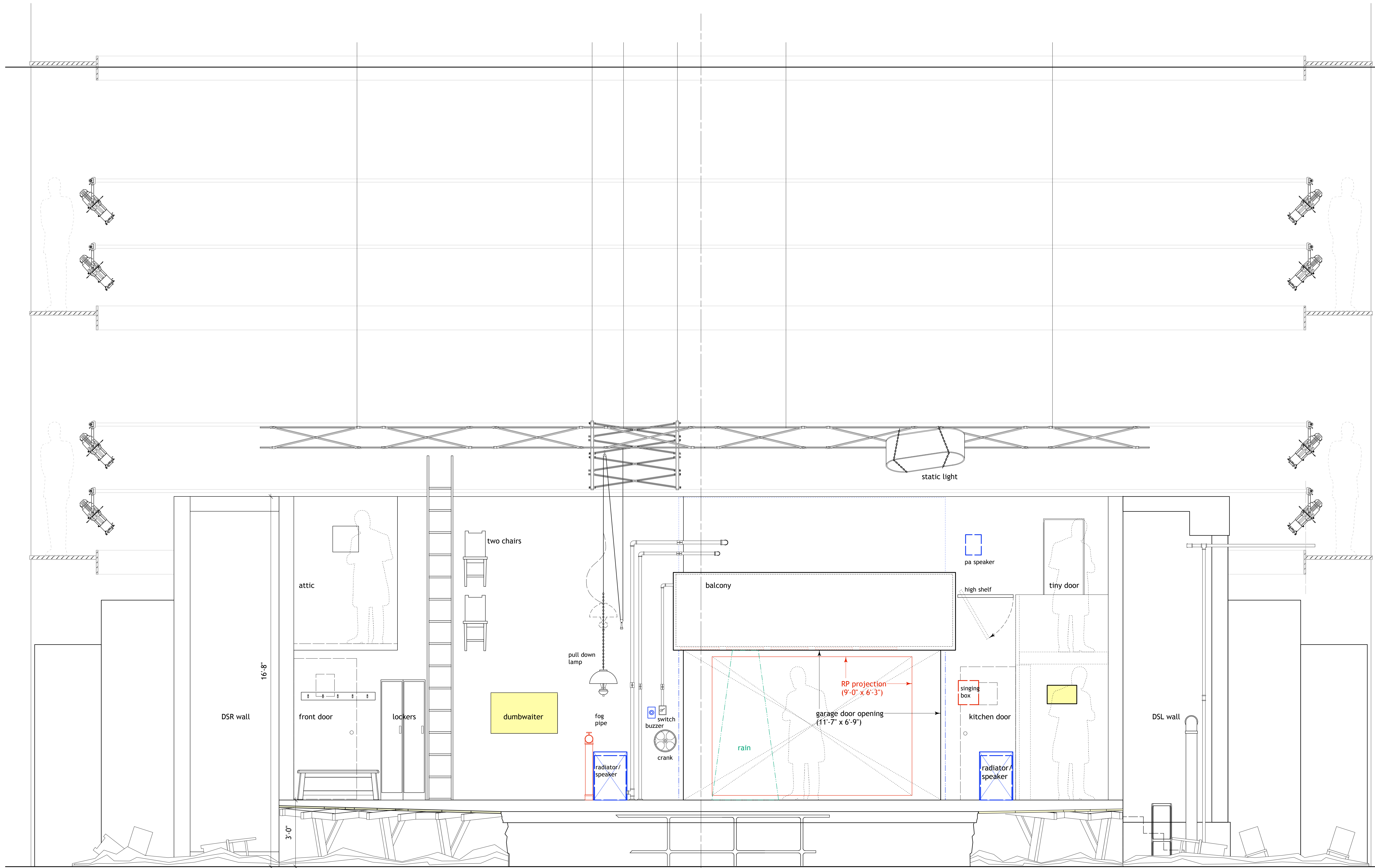
12.02 | what's new on plate C

- balcony updated
- aircraft cable added to trussing
- SL pipes above lowered to ground, moved DS
- SL window included

12.10 | updates

- static light adjusted
- pull down light updated
- footlights & strip lights included

plate **B**



■ composite front view

12.02 | what's new on plate C
- fog pipe lowered 11"
- aircraft cable added to trussing
- SL pipes above lowered to ground, moved DS
- balcony opening updated

12.10 | updates
- radiator DSL cut
- wheel/crank added below buzzer
- singing box enlarged
- static light defined

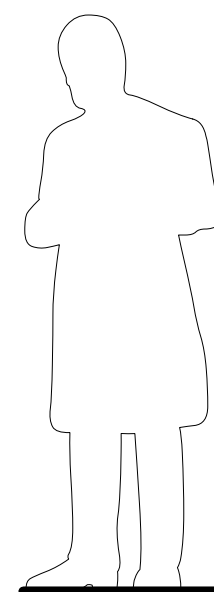
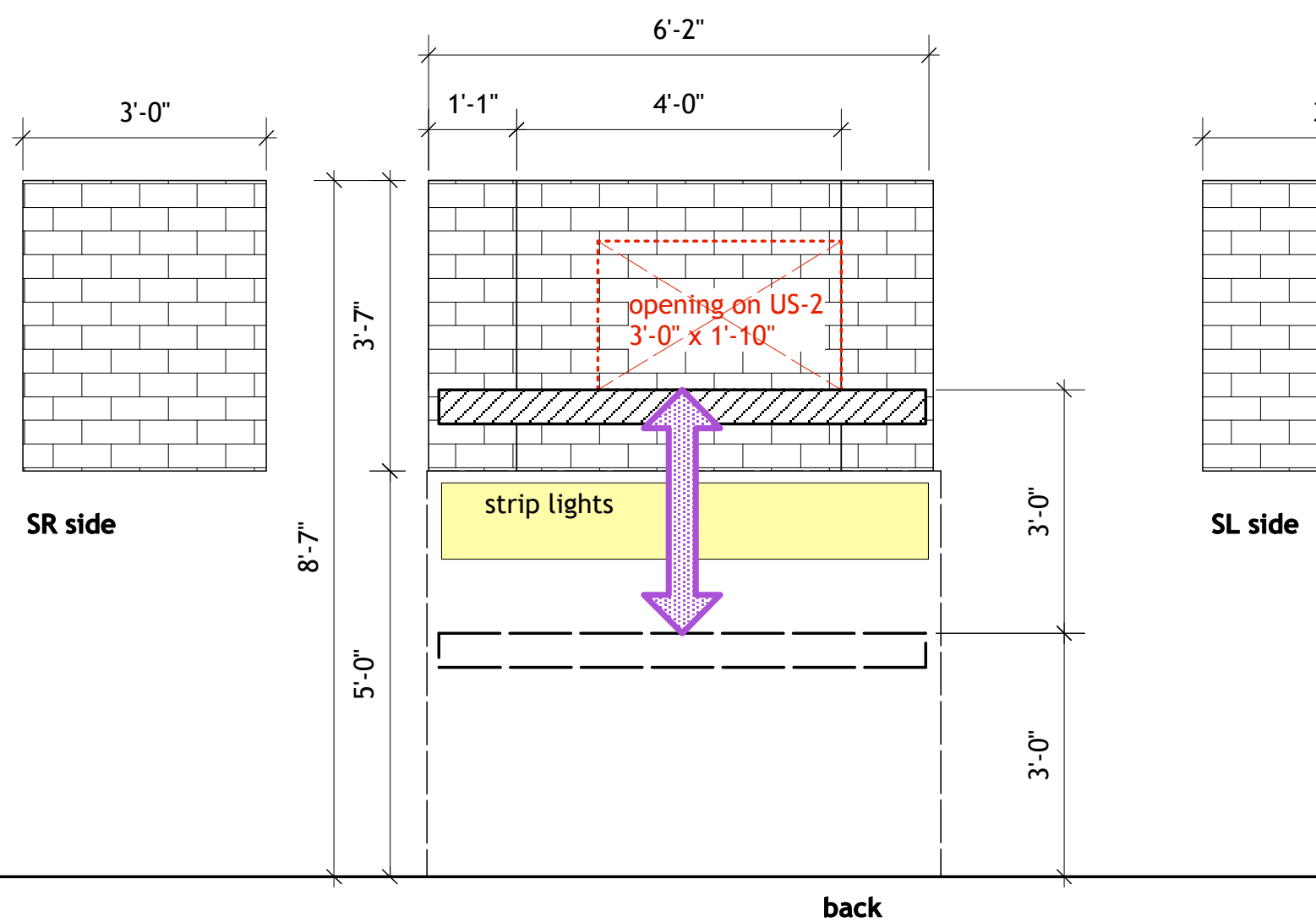
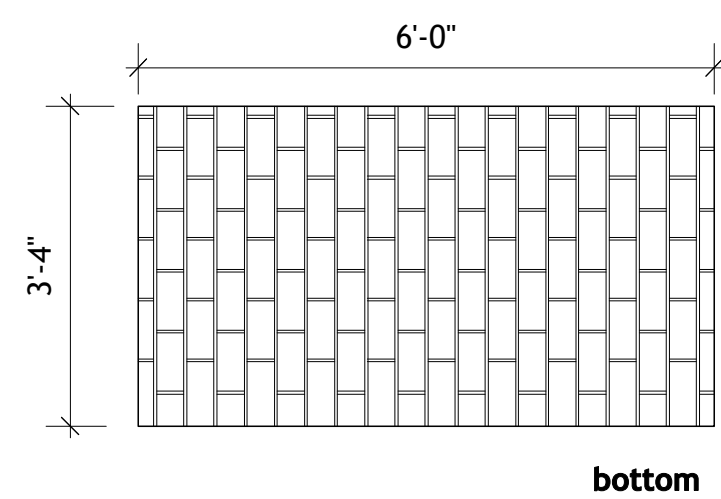
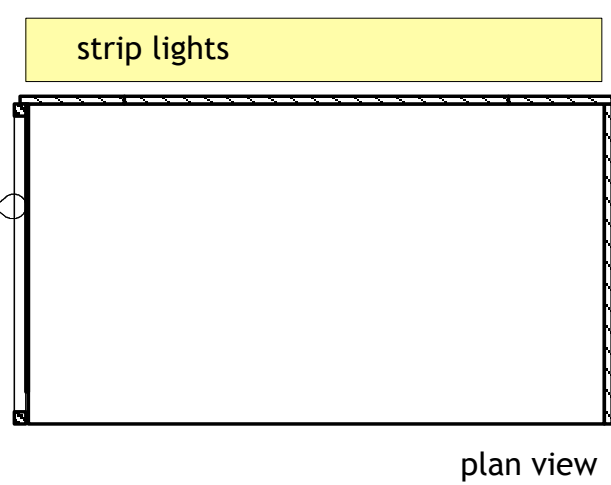


plate **C**



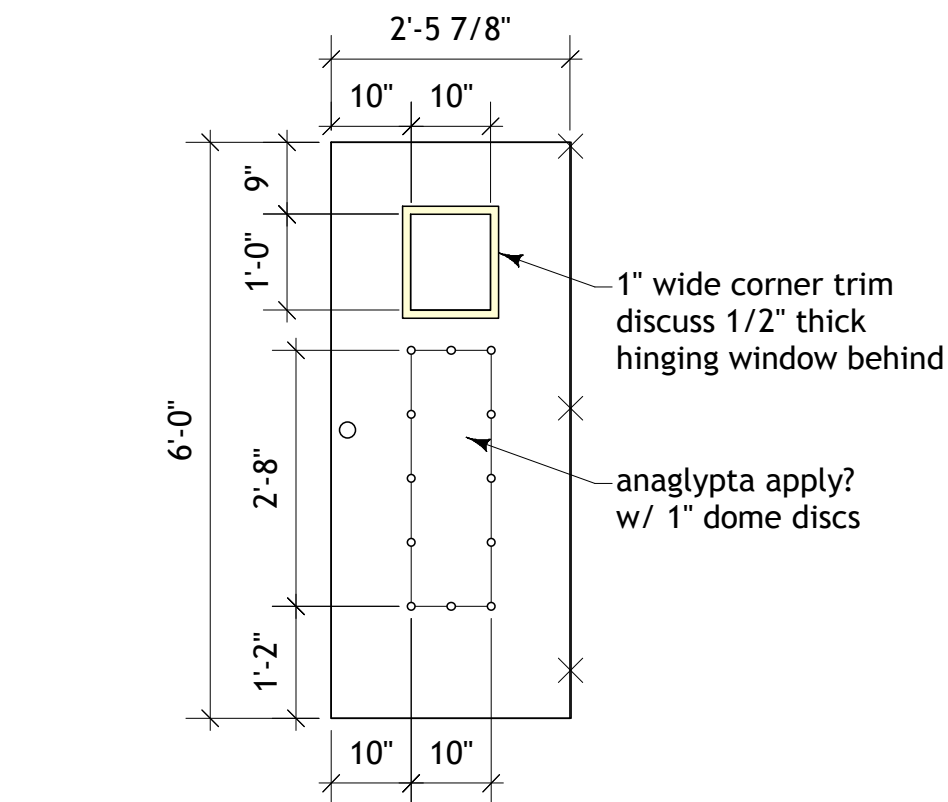
this wall is 14'-0" tall
to support the 14'-3" level



dumbwaiter notes
platform lives at the +6'-0" level
platform is loaded with 1 actor, then platform lowers 3'-0" (actor leaves)
in the 'down' position, platform is also loaded with actor & raised 'up'

brick is a new purchase

■ dumbwaiter

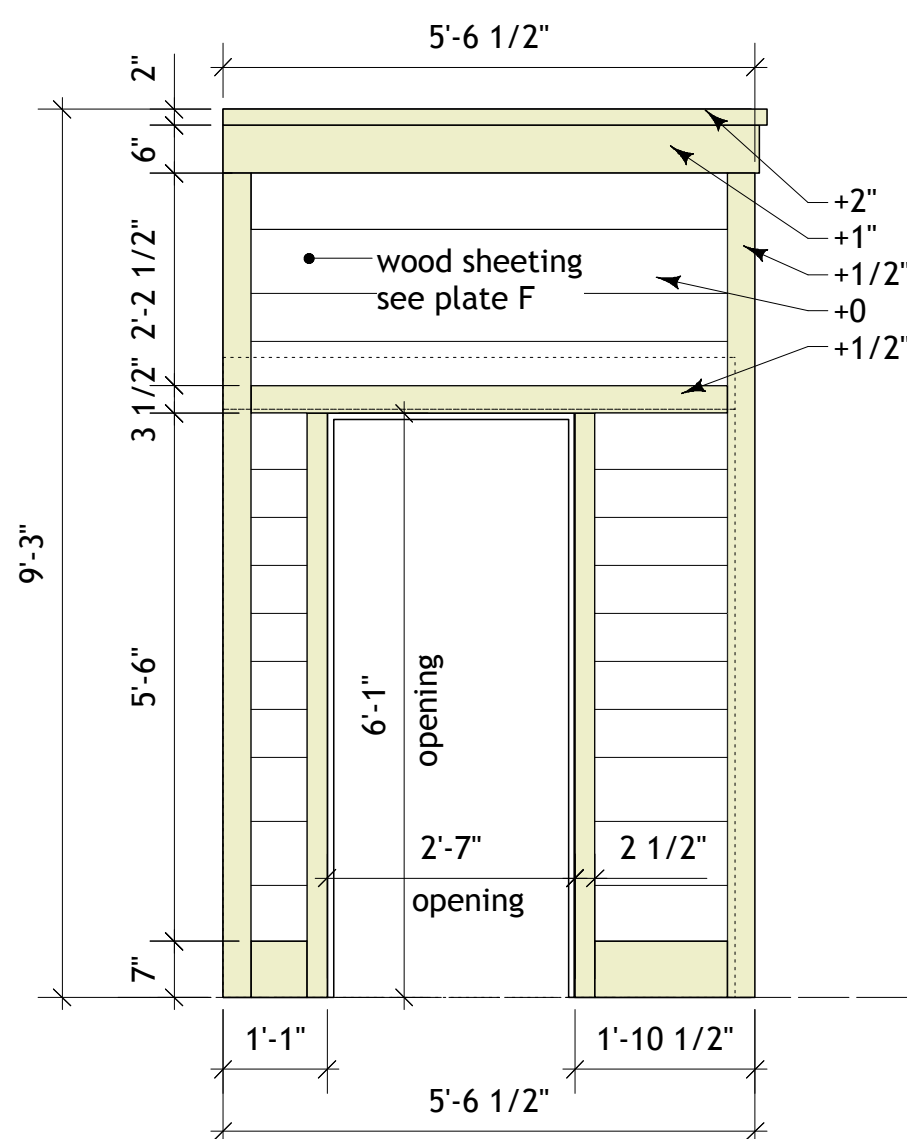


stock #42
29 7/8" x 80"
(cut bottom to height of 72")

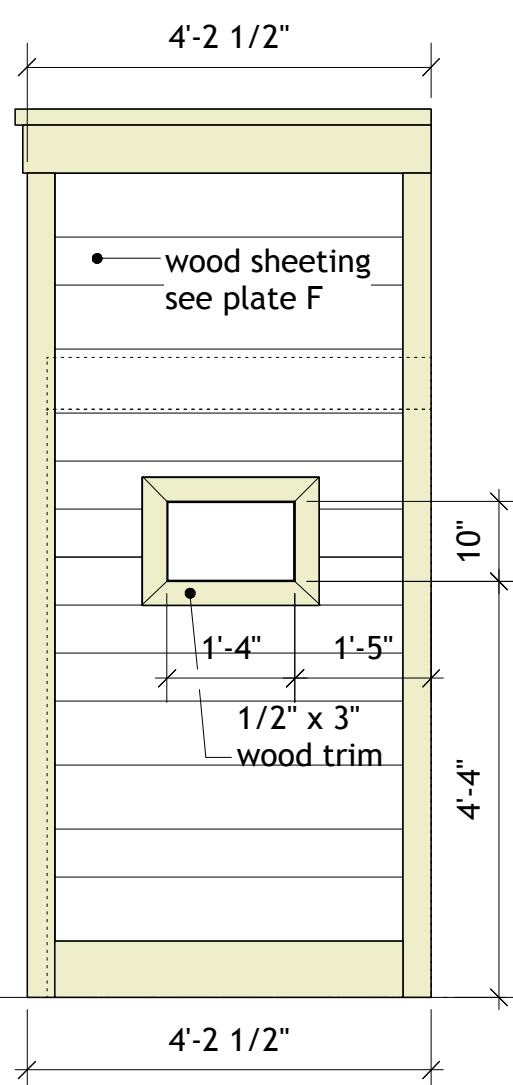
add hook on back of door so it can be pulled
open/closed by crew

door opens ONSTAGE, hinges on DS side

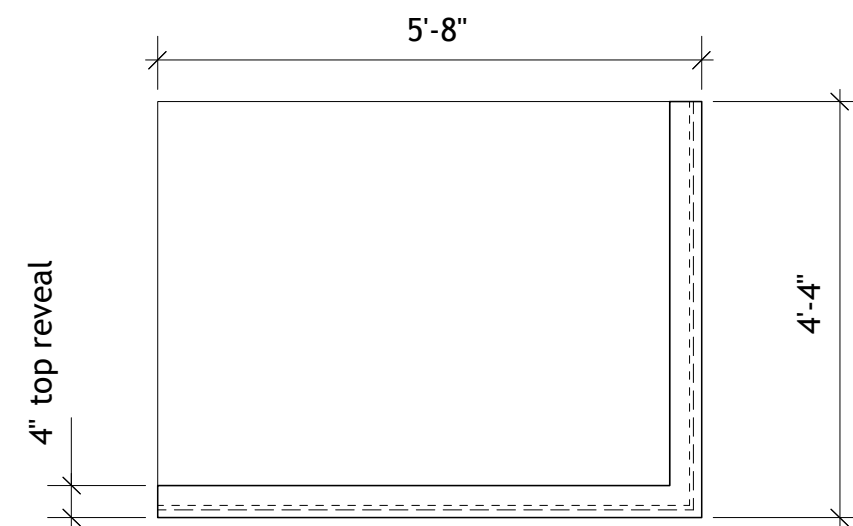
■ kitchen door



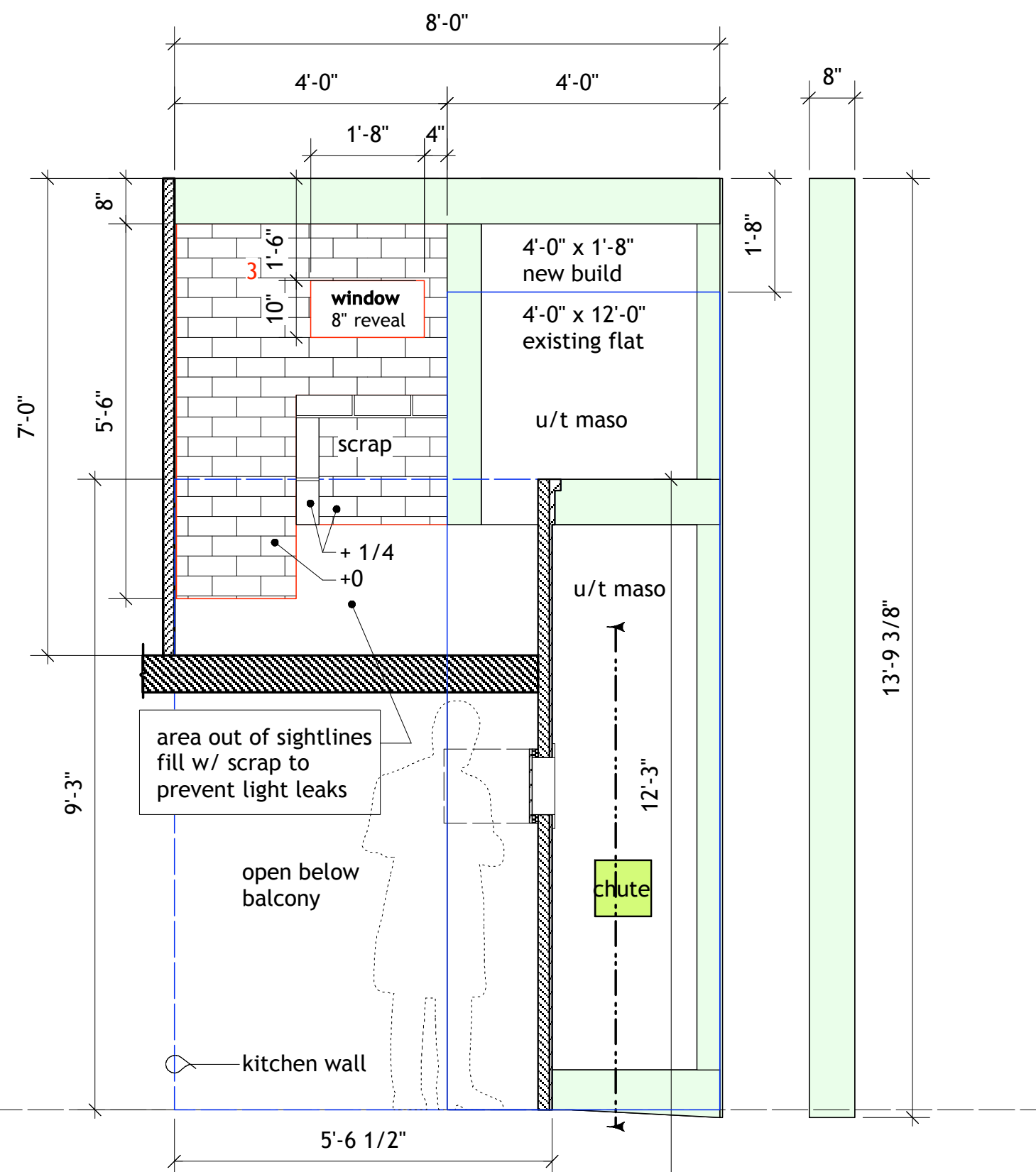
■ kitchen door wall



■ kitchen wall



■ top view of SL balcony cap

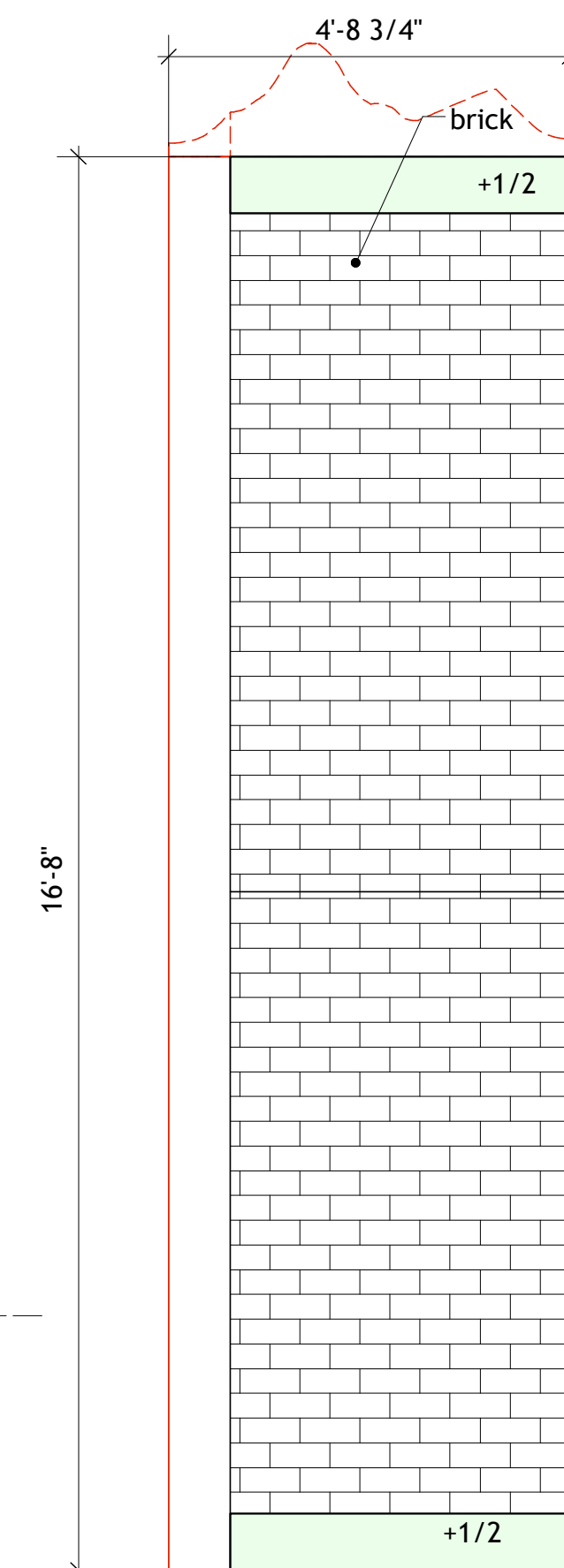


chute note
"a large amount of dirt comes out of the chute"
2 bags of cork?

■ SL wall

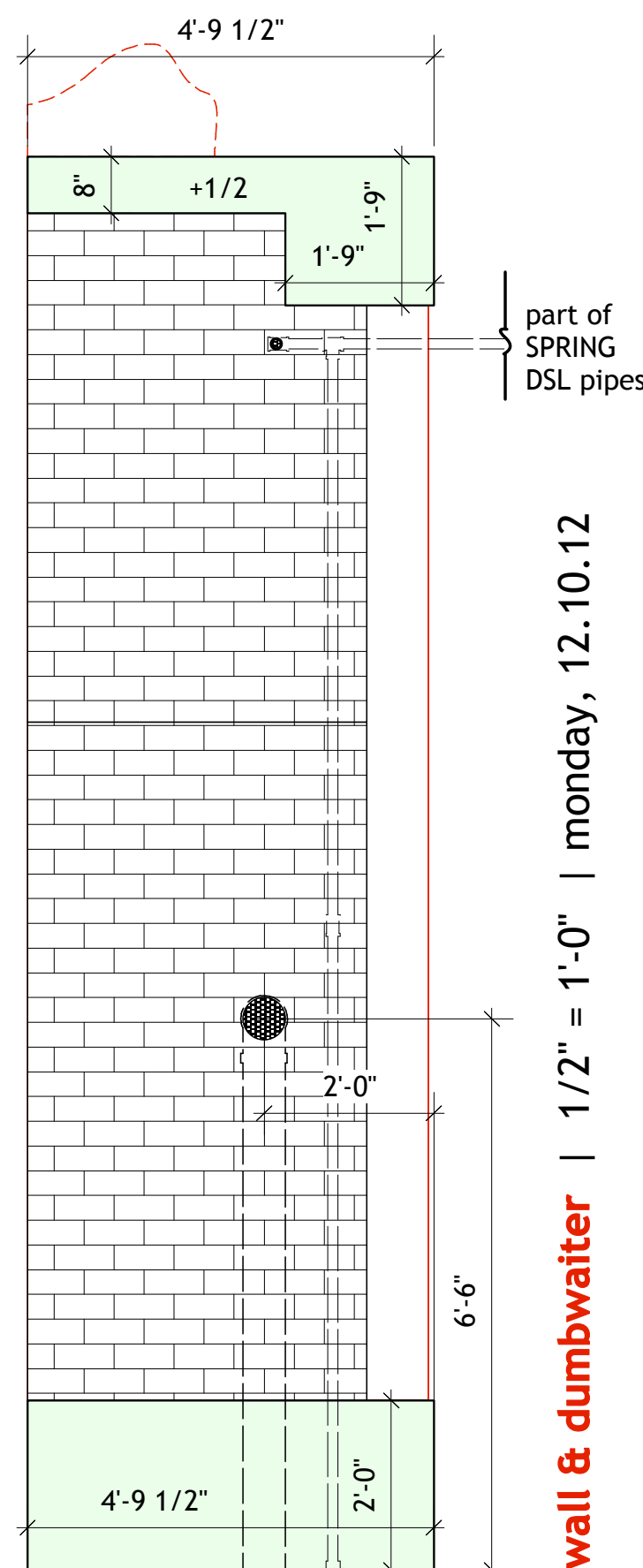
■ DSL reveal

SR proscenium SPRING wall
trim to 16'-8"
add 8" x 1/2" block on top & bottom

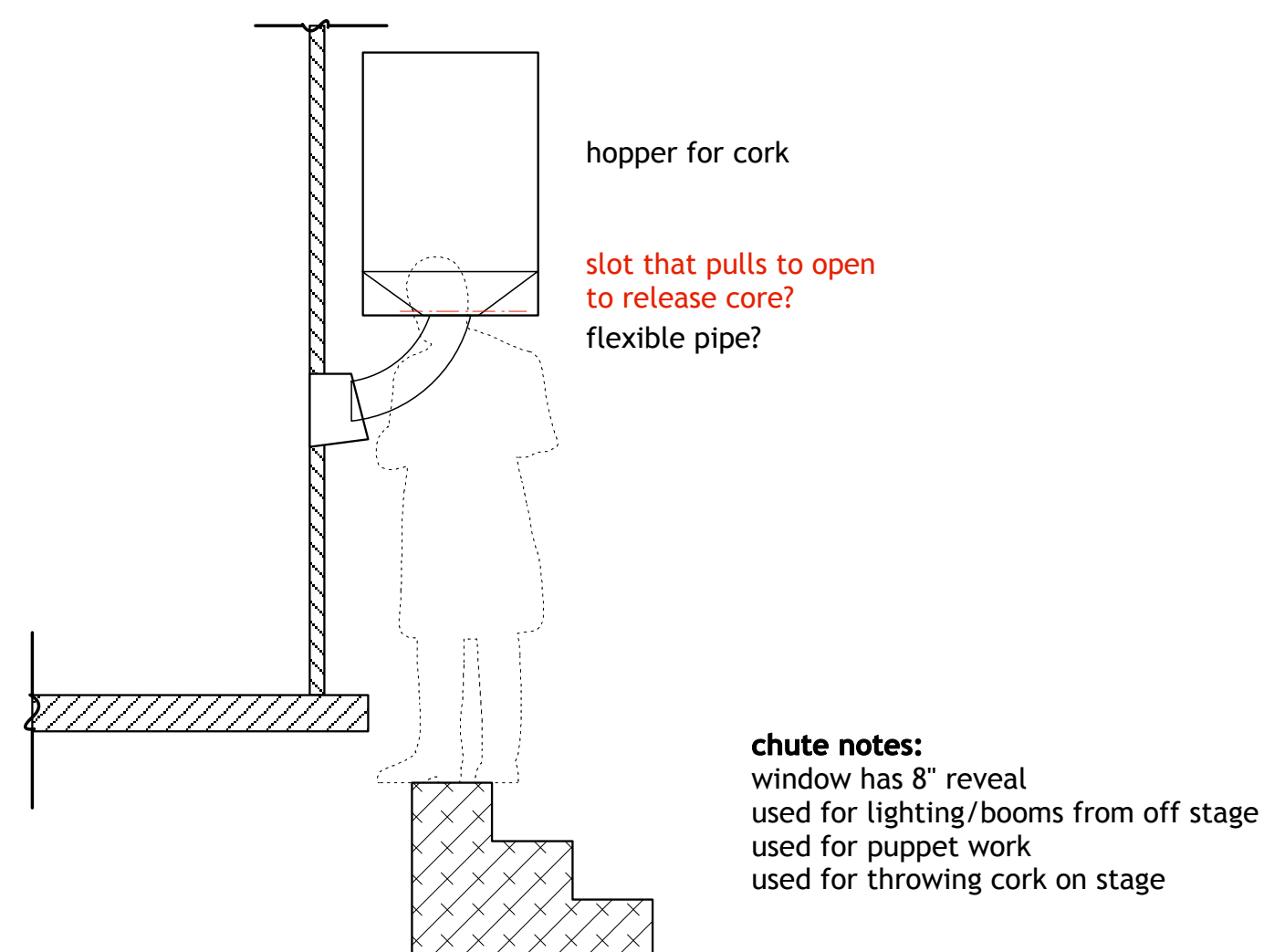


■ DSR wall

SL proscenium SPRING wall
w/ 2'-0" bottom
& added piece over top
trim top
up to 16'-8" finished height



■ DSL wall



■ chute section

12.02 | what's new on plate E
- dumbwaiter depth US reduced 8"
- kitchen door baseboard reduced to 7"

12.10 | updates
- radiator on DSL wall cut
- shelves cut on kitchen wall
- SL wall scrap edging
- SPRING pipe laid in on DSL wall
- dumbwaiter doors revised
- dumbwaiter notes adjusted

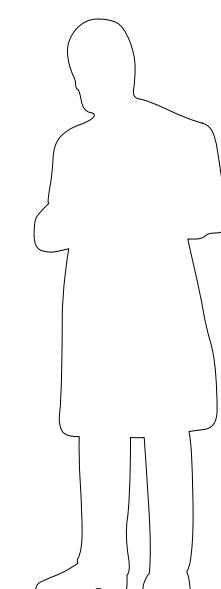
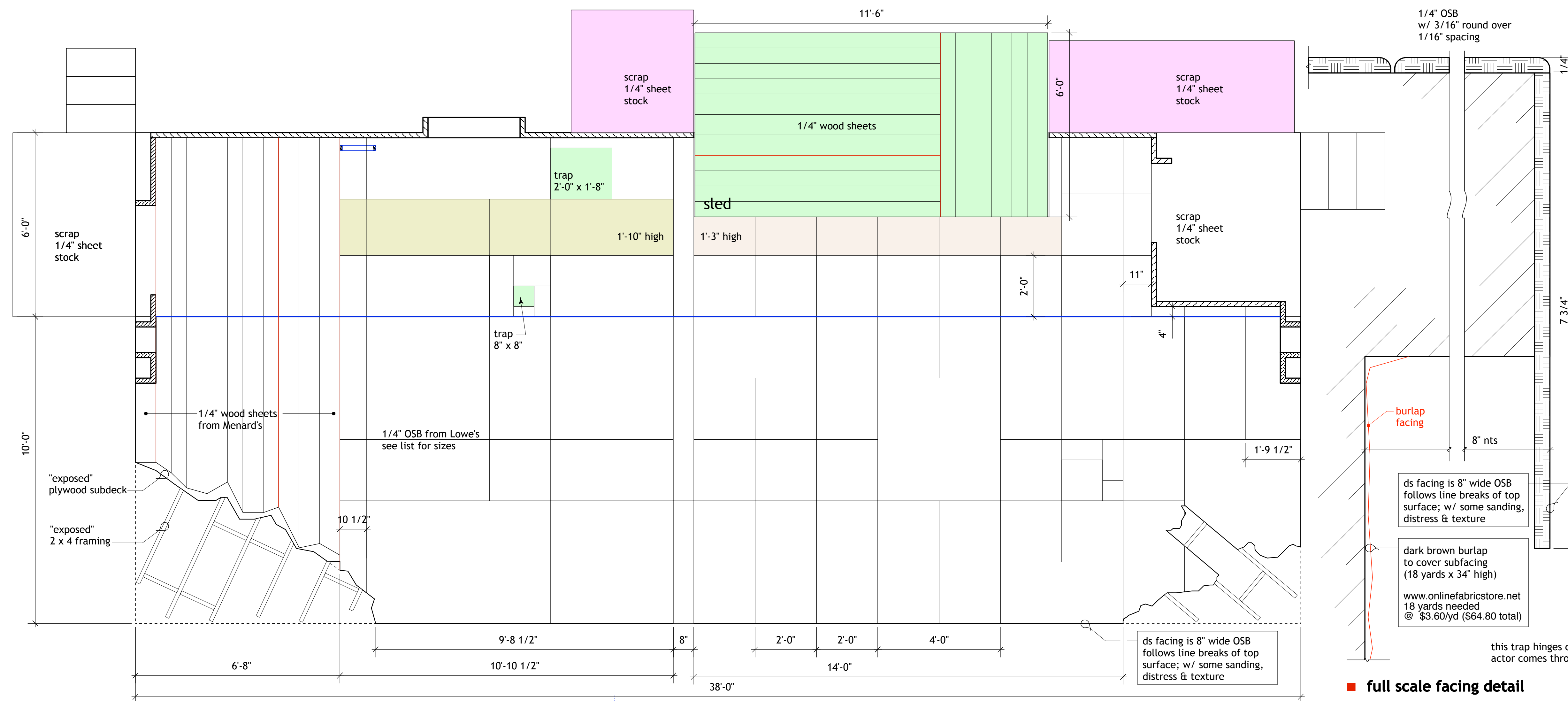


plate **E**

out of the pan into the fire iowa '13 | kitchen wall, SL wall & dumbwaiter | 1/2" = 1'-0" | monday, 12.10.12
dominique serrand, director | r. eric stone, scenic designer



■ **notes**

OSB TILE SIZES
cut from 16 sheets total

1/4" osb sheeting, smooth side out
product from LOWE'S: #12206
\$5.87 per 4' x 8'
there are no black construction marks on these sheets
this is critical to the paint finish

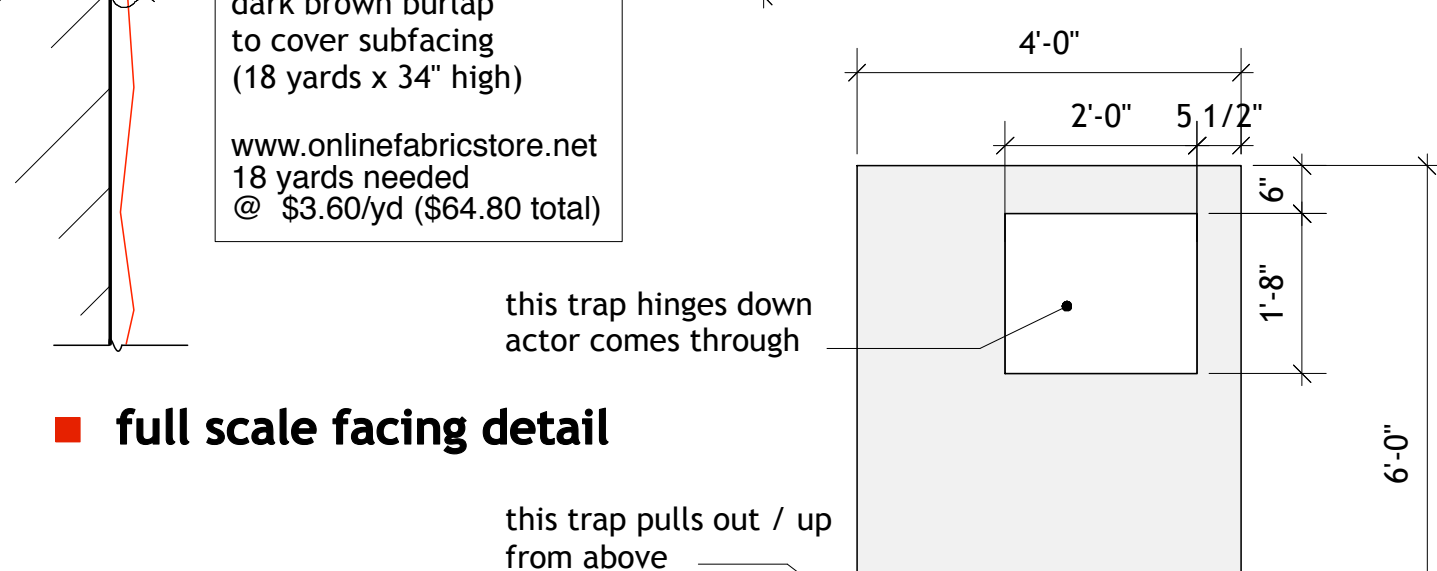
all tiles then have a 3/16" round over on all sides of top

#		dimensions (reduce by kerf width, if needed)
3	⊗	4" x 4"
6	⊗	4" x 2"
65	⊗	2" x 2"
6	⊗	2" x 1'-3"
5	⊗	2" x 1'-10"
6	⊗	2" x 1'-9 1/2"
6	⊗	2" x 1'-3"
2	⊗	2" x 11"
7	⊗	2" x 10 1/2"
1	⊗	1'-10 1/2" x 10 1/2"
1	⊗	6" x 8"
1	⊗	5'-10" x 8"
1	⊗	4" x 8"
1	⊗	2" x 4"
2	⊗	1'-4" x 4"
2	⊗	1'-4" x 1'-4"
4	⊗	1'-4" x 8"
2	⊗	8" x 8"
1	⊗	11" x 1'-10"
1	⊗	5" x 2'-7"
8	⊗	2" x 8" (ds facing)
2	⊗	4" x 8" (ds facing)
1	⊗	8" x 8" (ds facing)

WOOD SHEETING

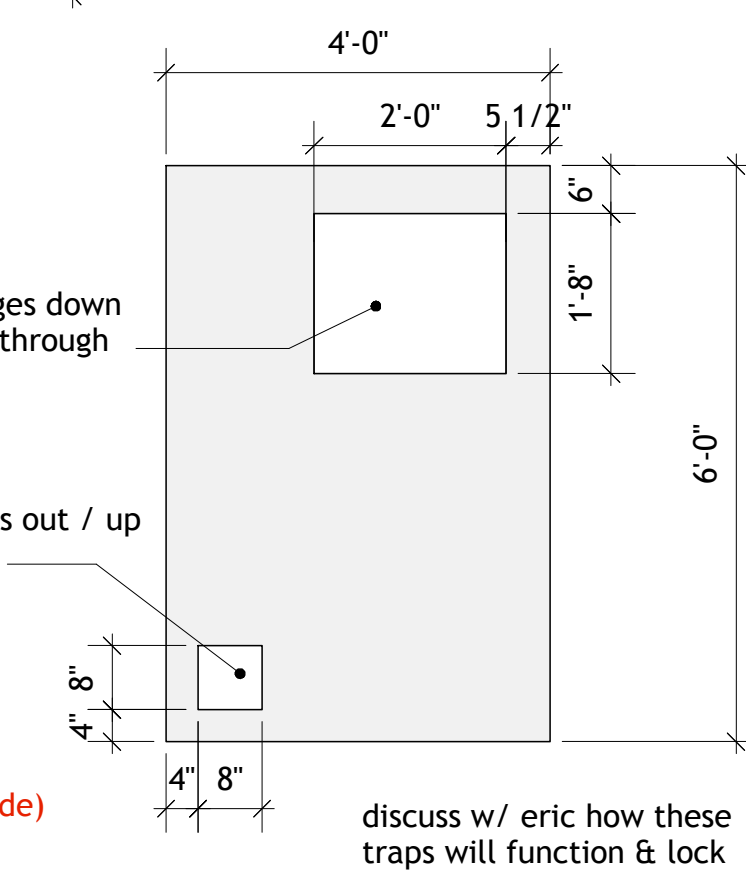
9 sheets needed
6 for deck, 3 for kitchen wall

Brown Homesteader from Menard's
4' x 8'
\$26.99 per sheet (#530-3004)

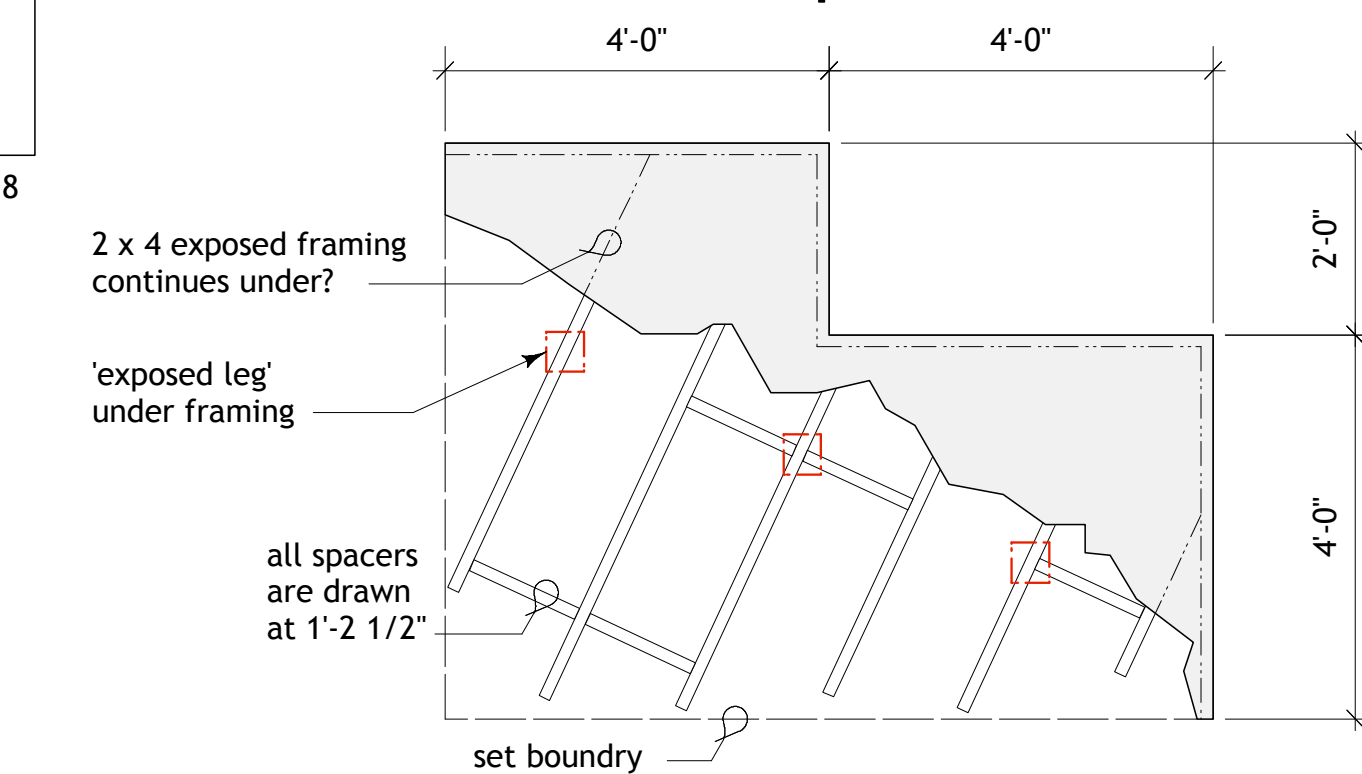


11.29 | what's new on plate G

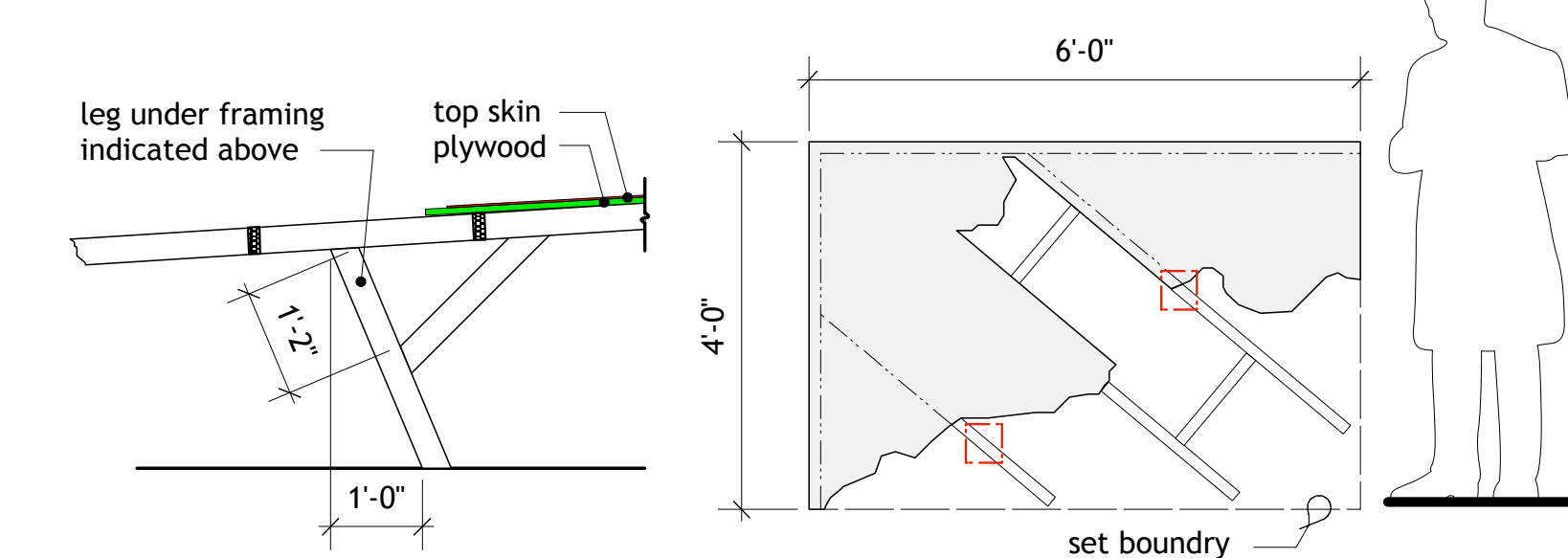
- new USL & USR 36" escapes (see plate A for stairs)
- tunnel path under deck suggested
- hinges on the US trap on the US underside (not DS side)
- pin holes for front & kitchen doors



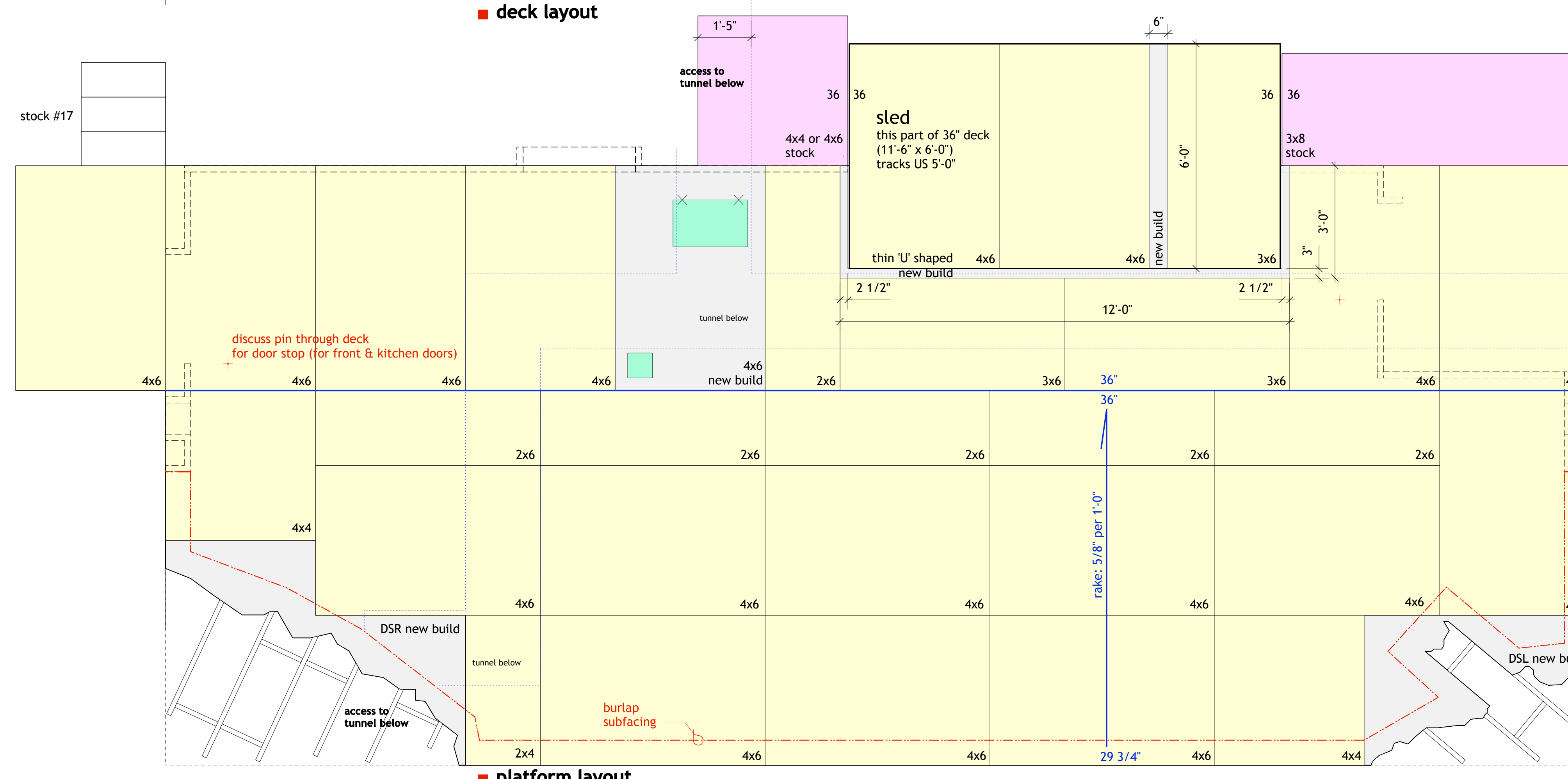
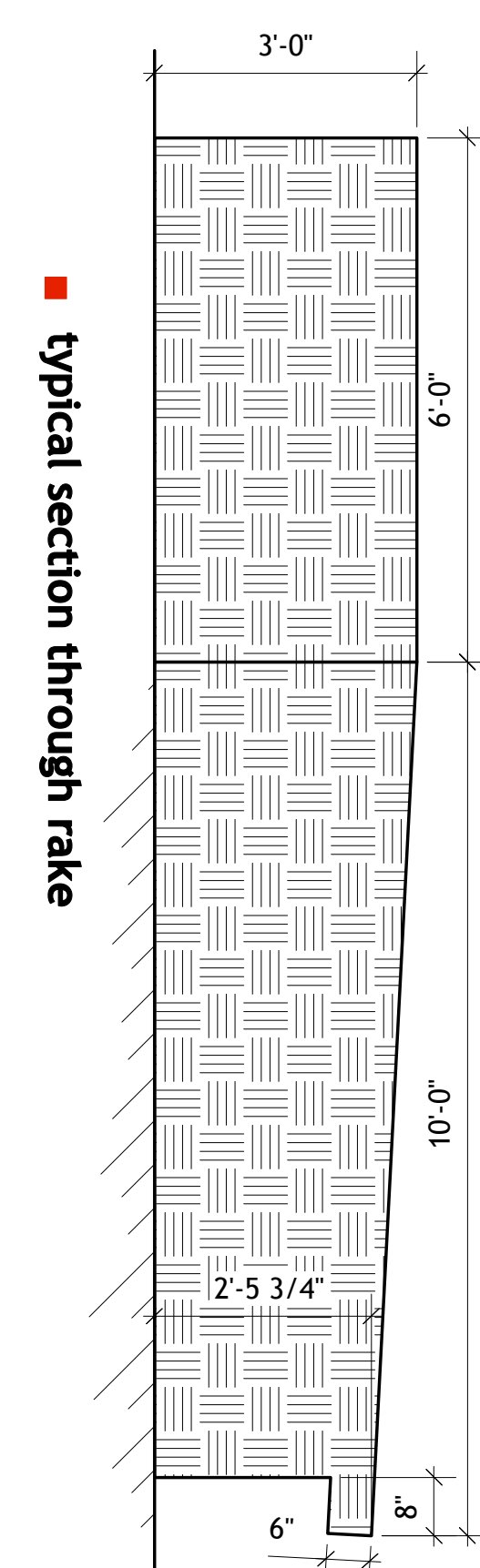
- trap new build



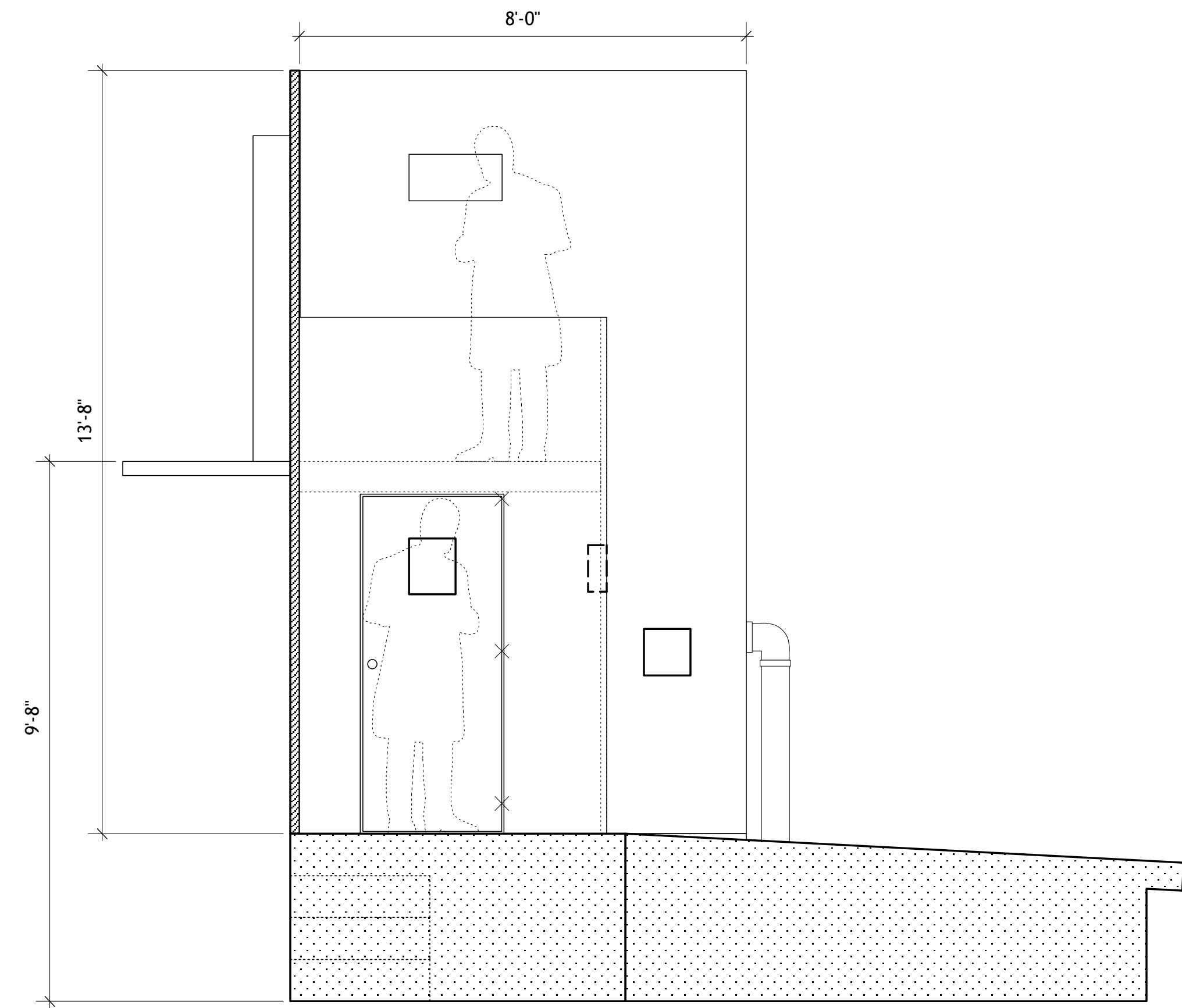
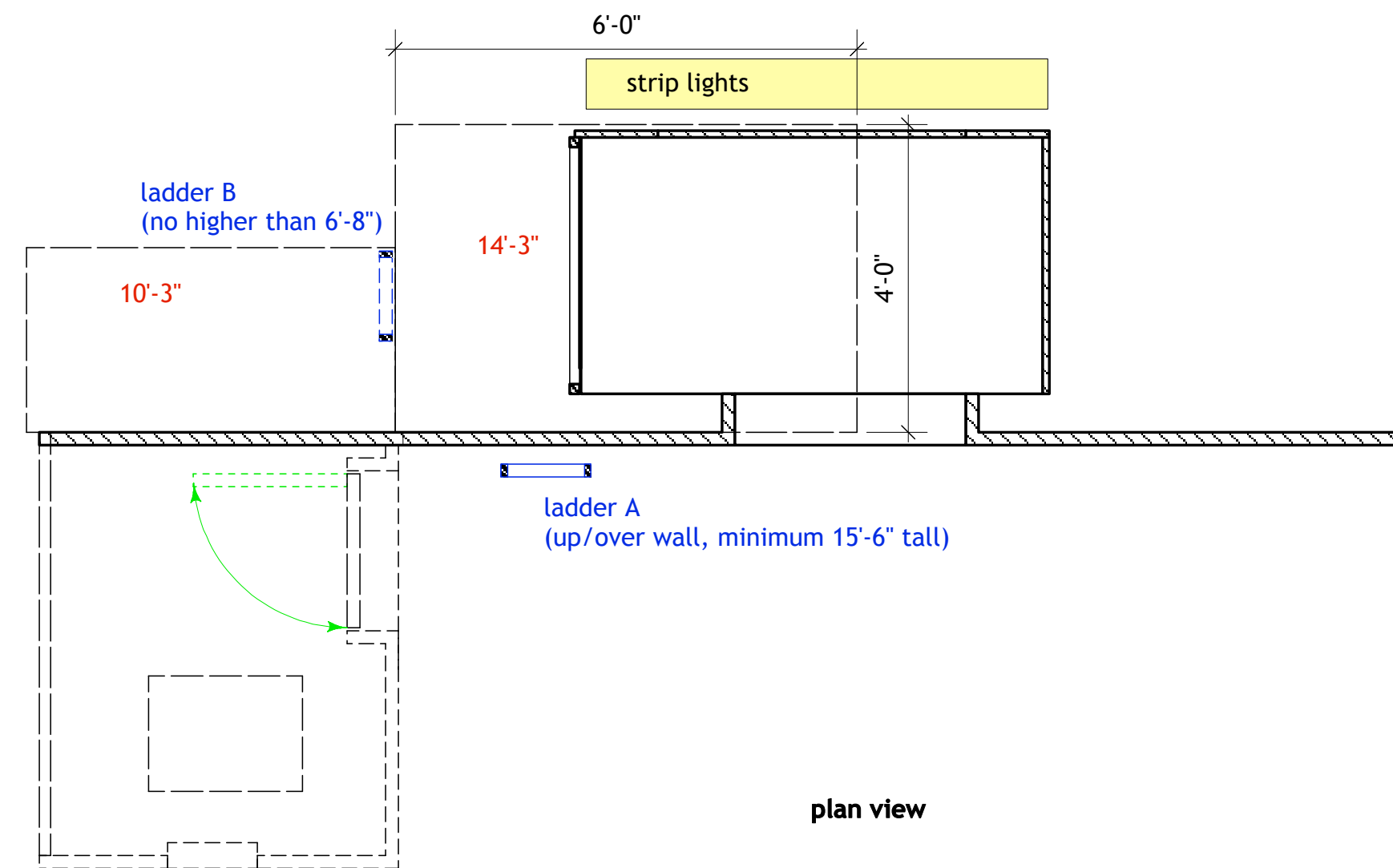
■ **DSR new build**



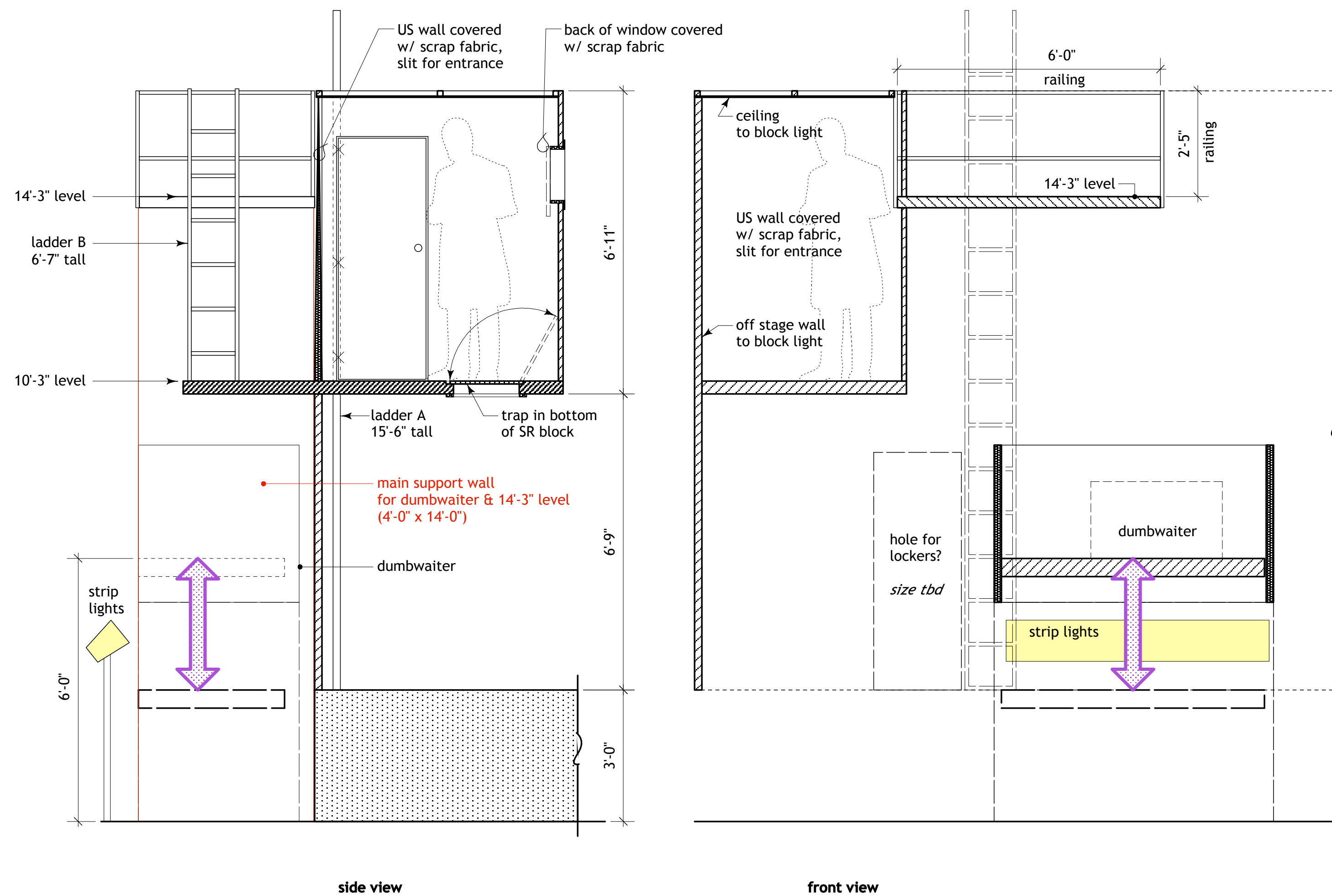
- **DSL new build**



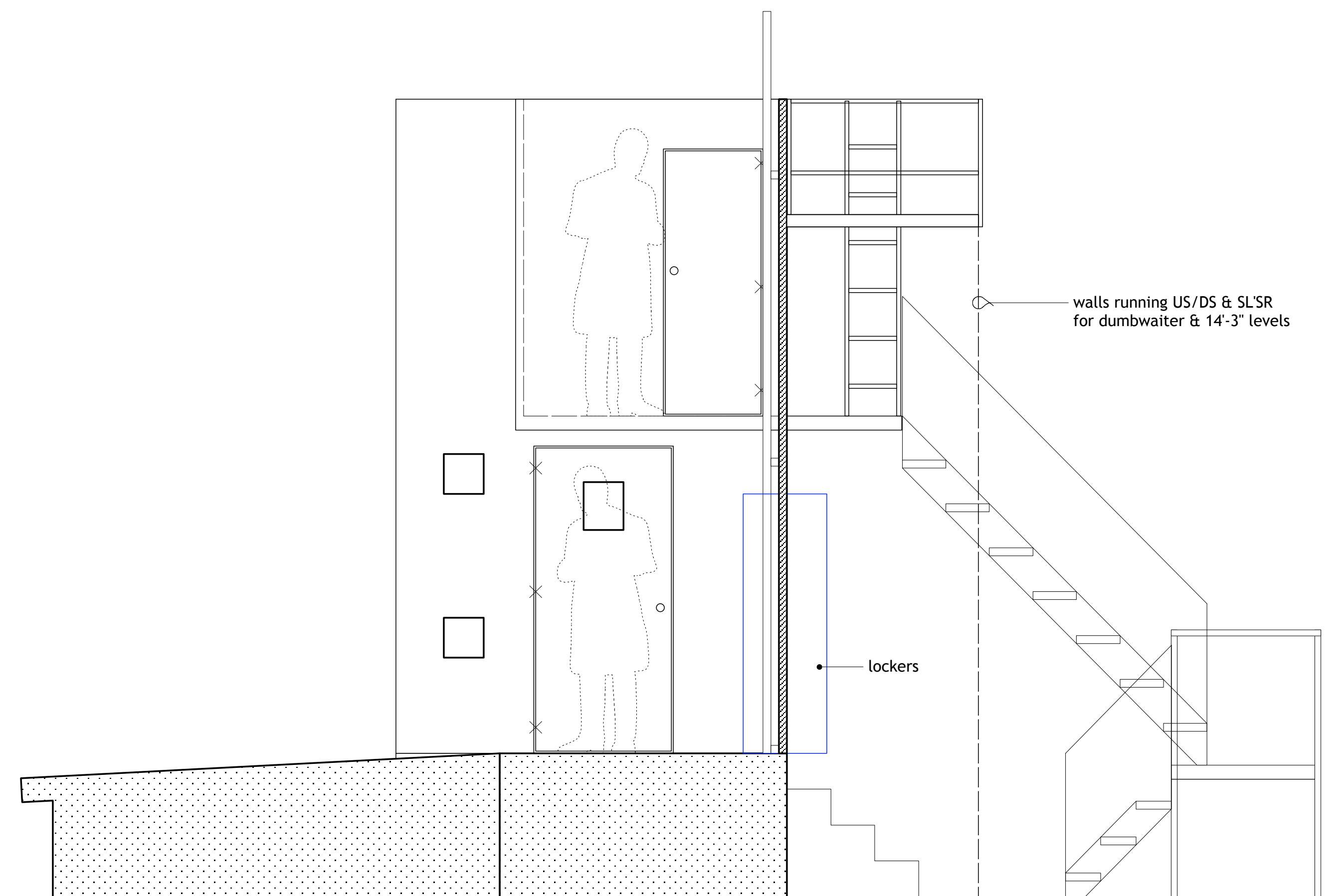
out of the pan into the fire iowa '13 | **deck layout & sheet layout** | 1/2" = 1'-0" | thursday, 11.29.12



■ section looking at the kitchen door, balcony & SL wall



■ attic section looking on stage & up stage



12.02 | what's new on plate G
- dumbwaiter & 14'-3" adjustments
- SL window included

12.10 | updates
- radiator DL cut
- strip lights added behind dumbwaiter (discuss actor access to dumbwaiter in down position)

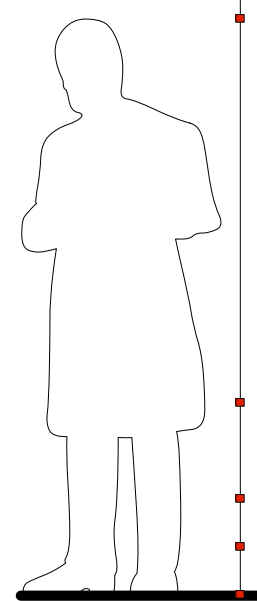
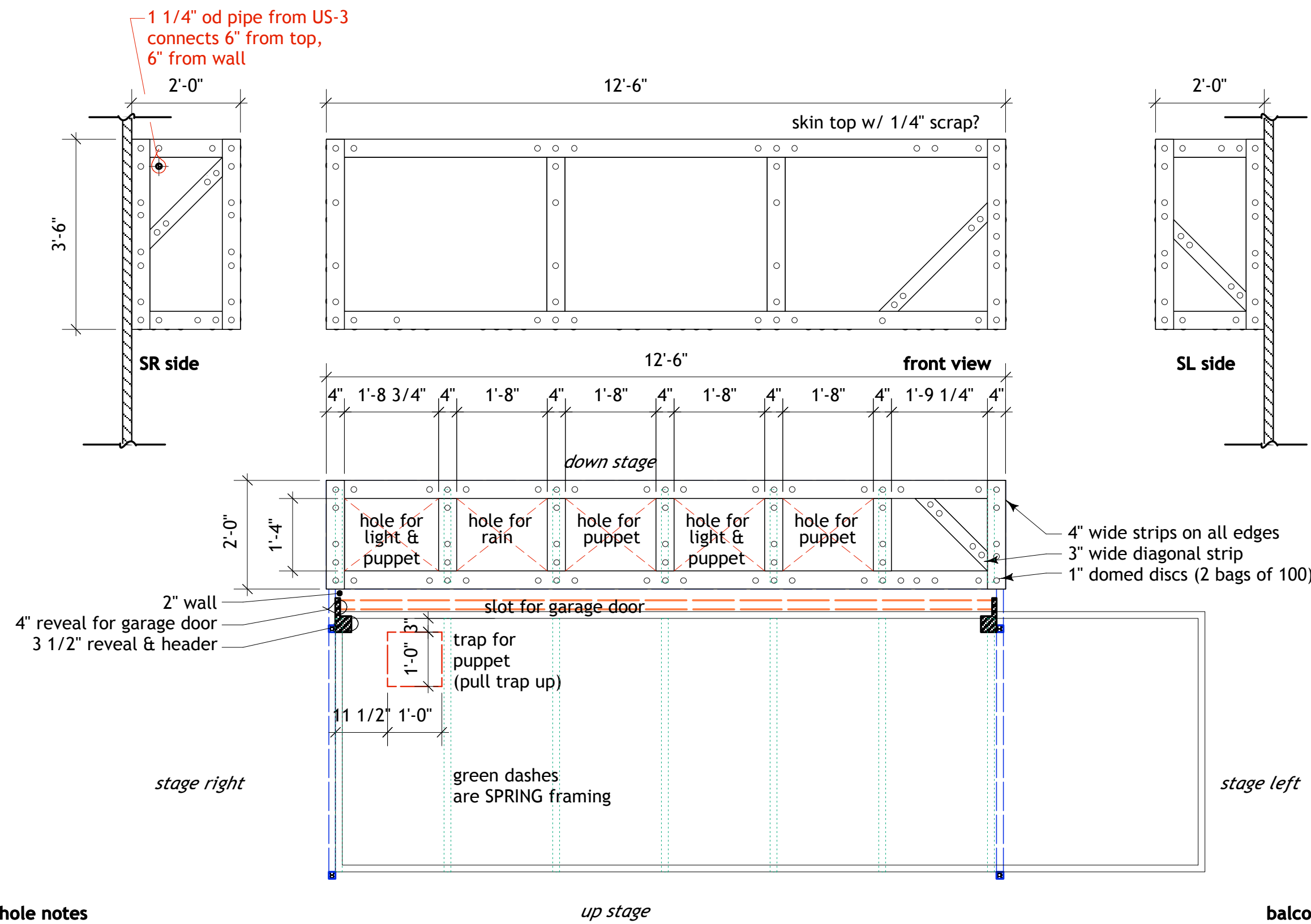
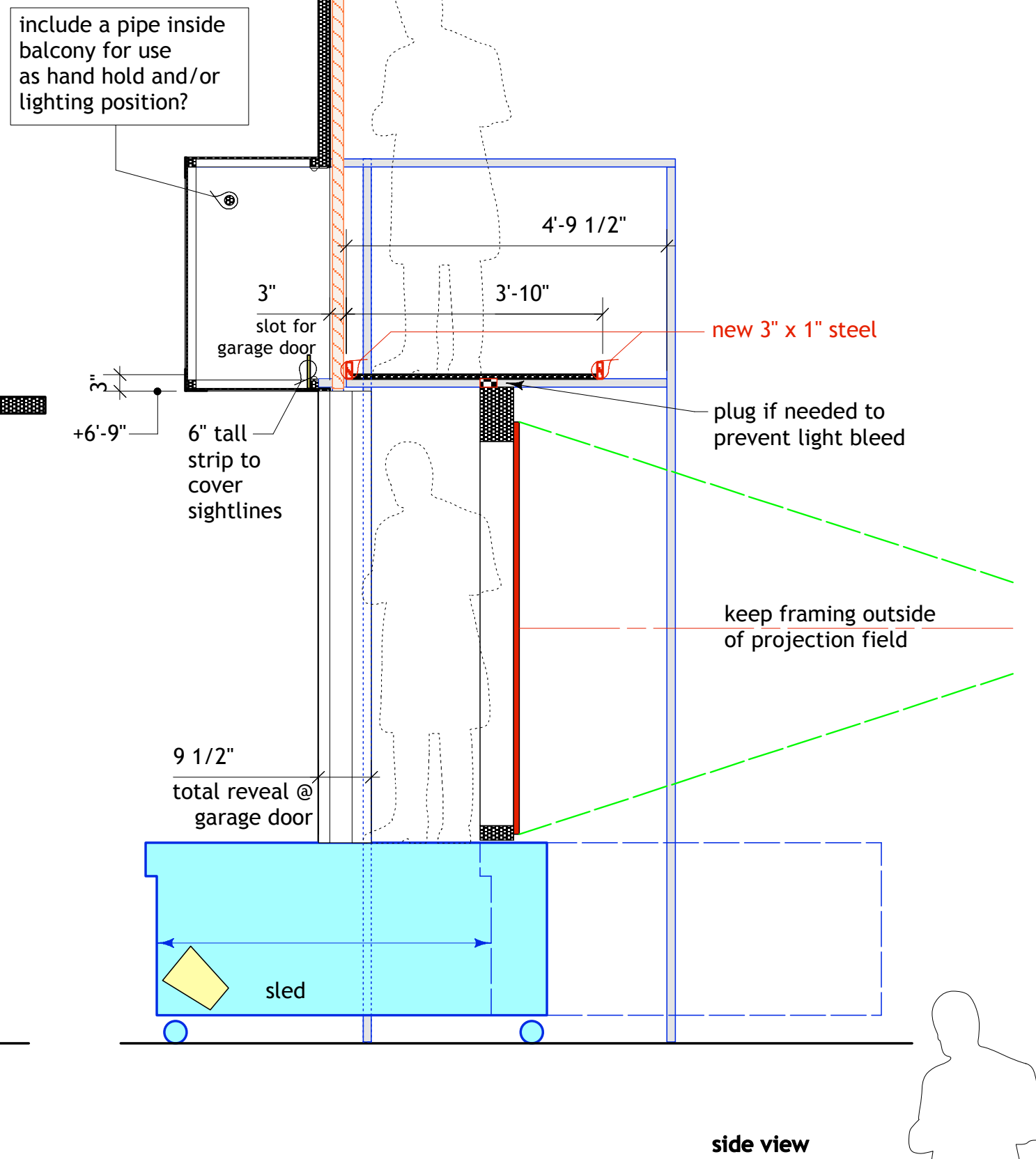
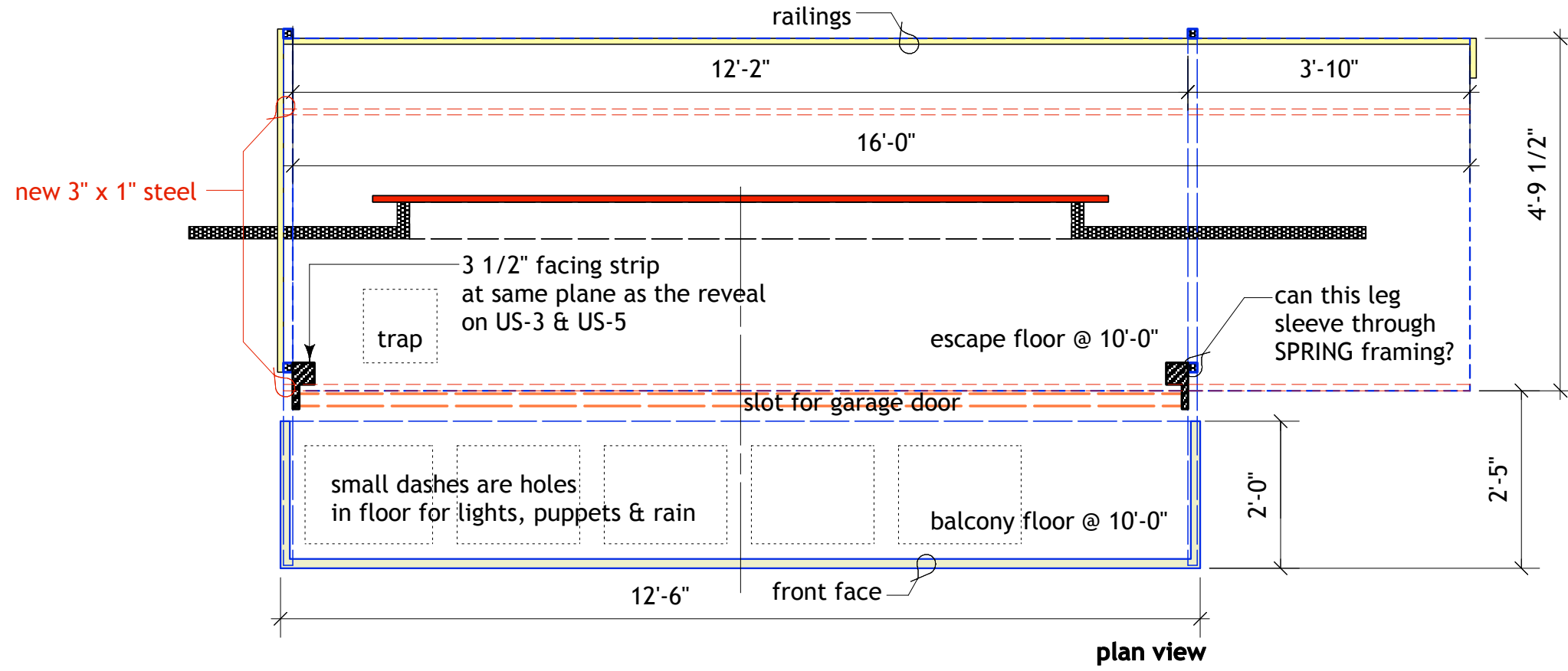
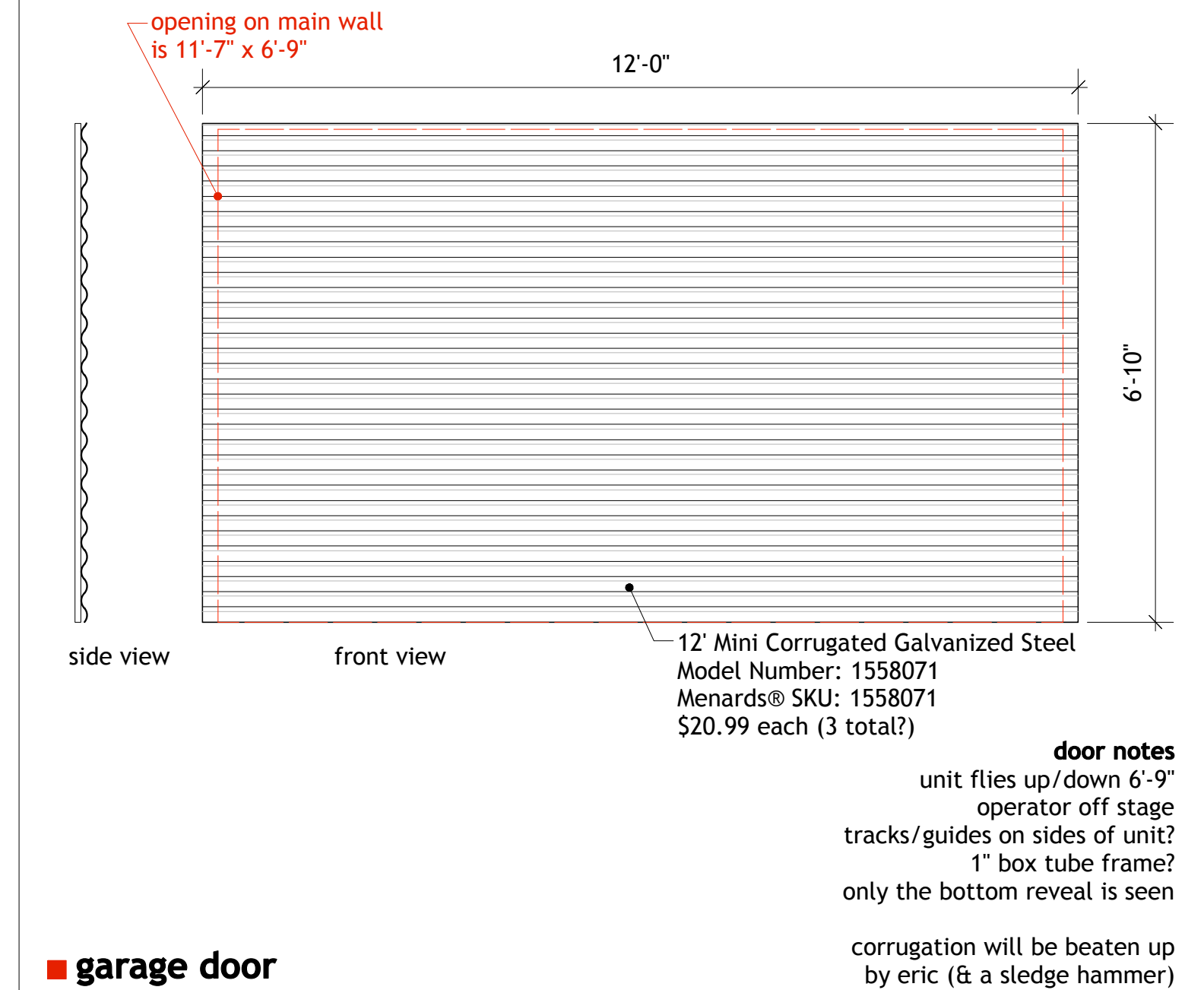
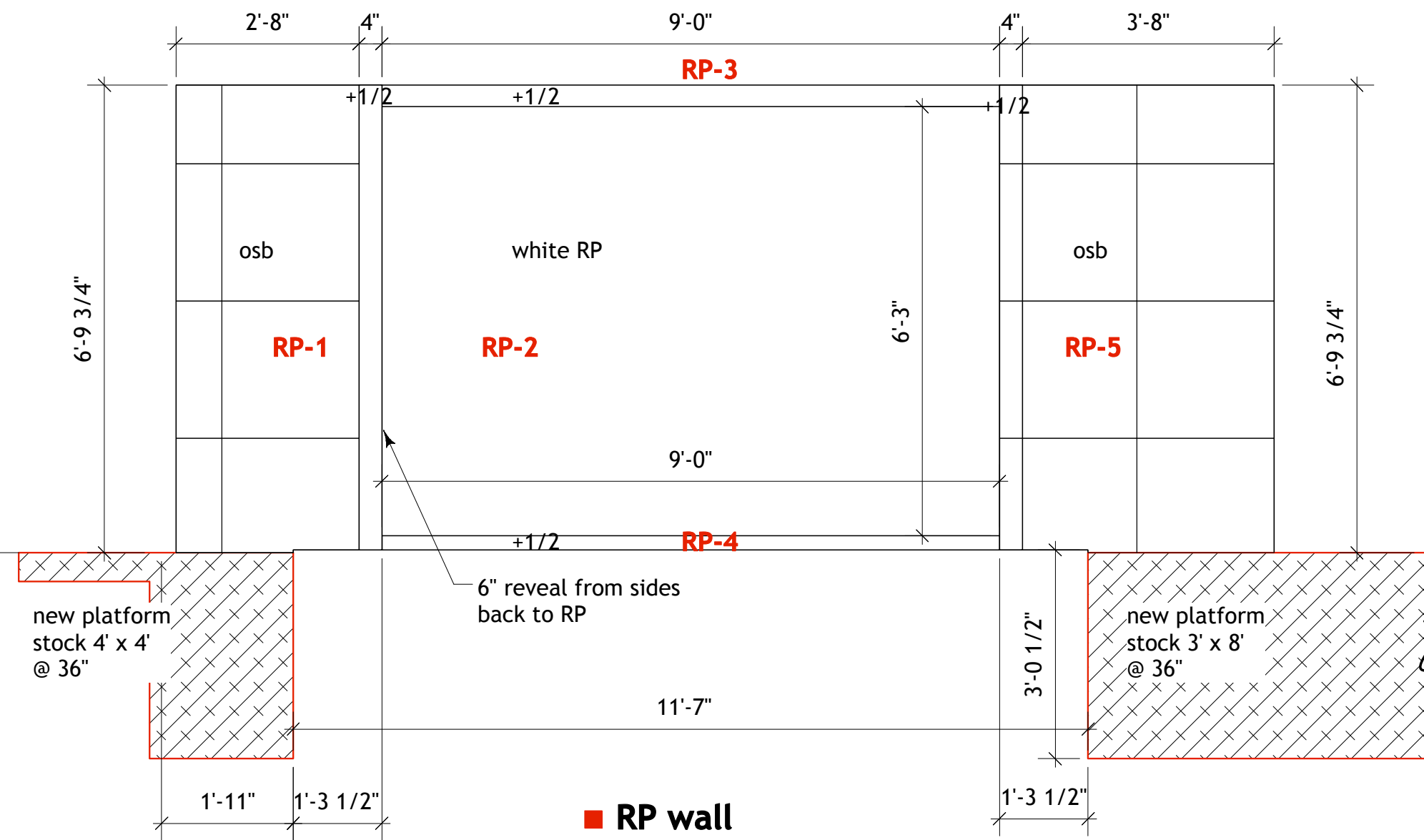
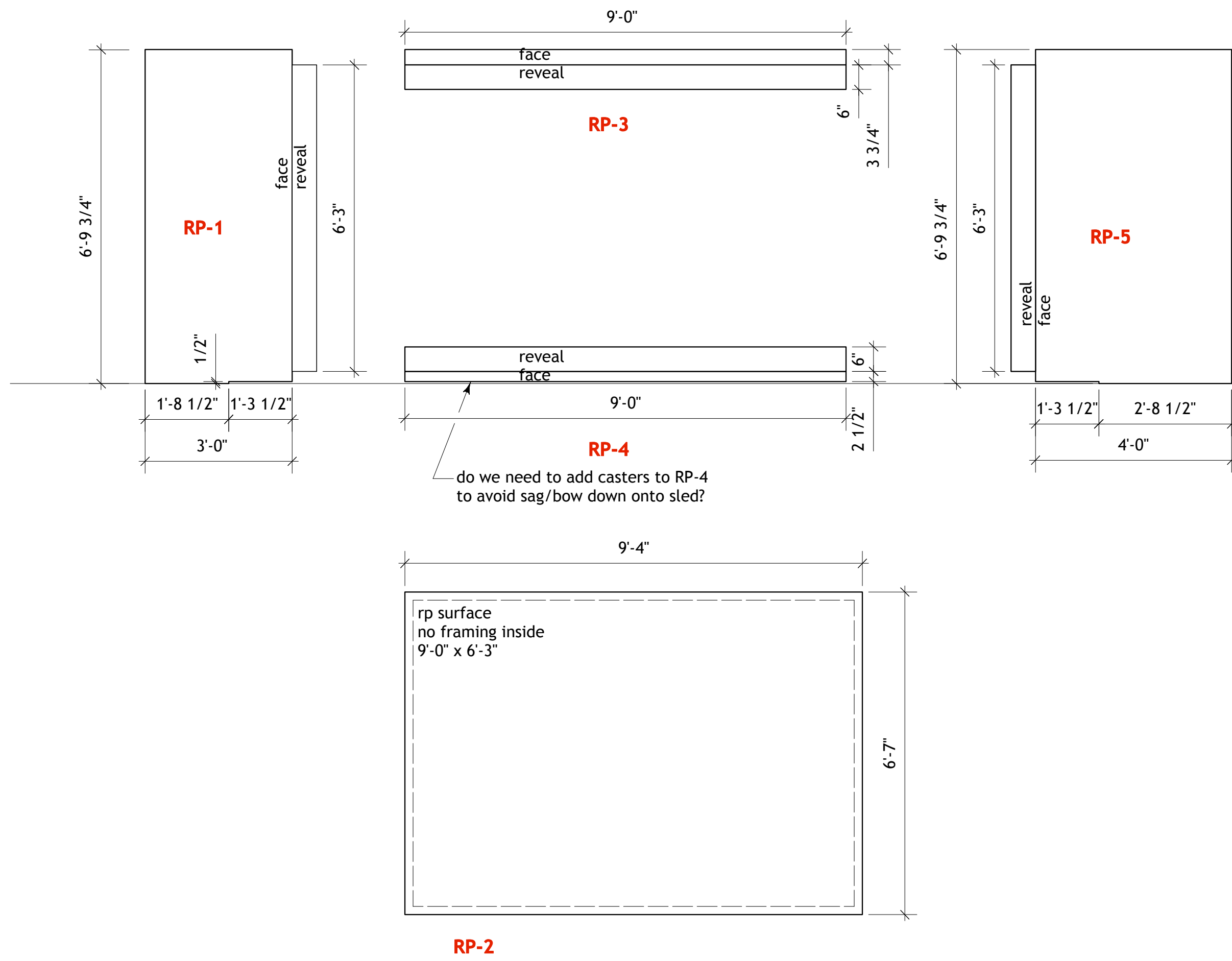


plate **G**

out of the pan into the fire iowa '13 | **sections** | 1/2" = 1'-0" | monday, 12.10.12
dominique serrand, director | r. eric stone, scenic designer | peggy finizio, lighting designer | jess fialko, costume designer



trap/hole notes
5 holes in DS section of balcony bottom
if holes are NOT used, then we'll fill/plug them
the plan at this point is to keep the holes open, rather than have them hinge

discuss use of lighting positions INSIDE balcony front facing unit
- where do the cable runs go?
- is it possible to use a hole for both a fixed lighting position & puppets?

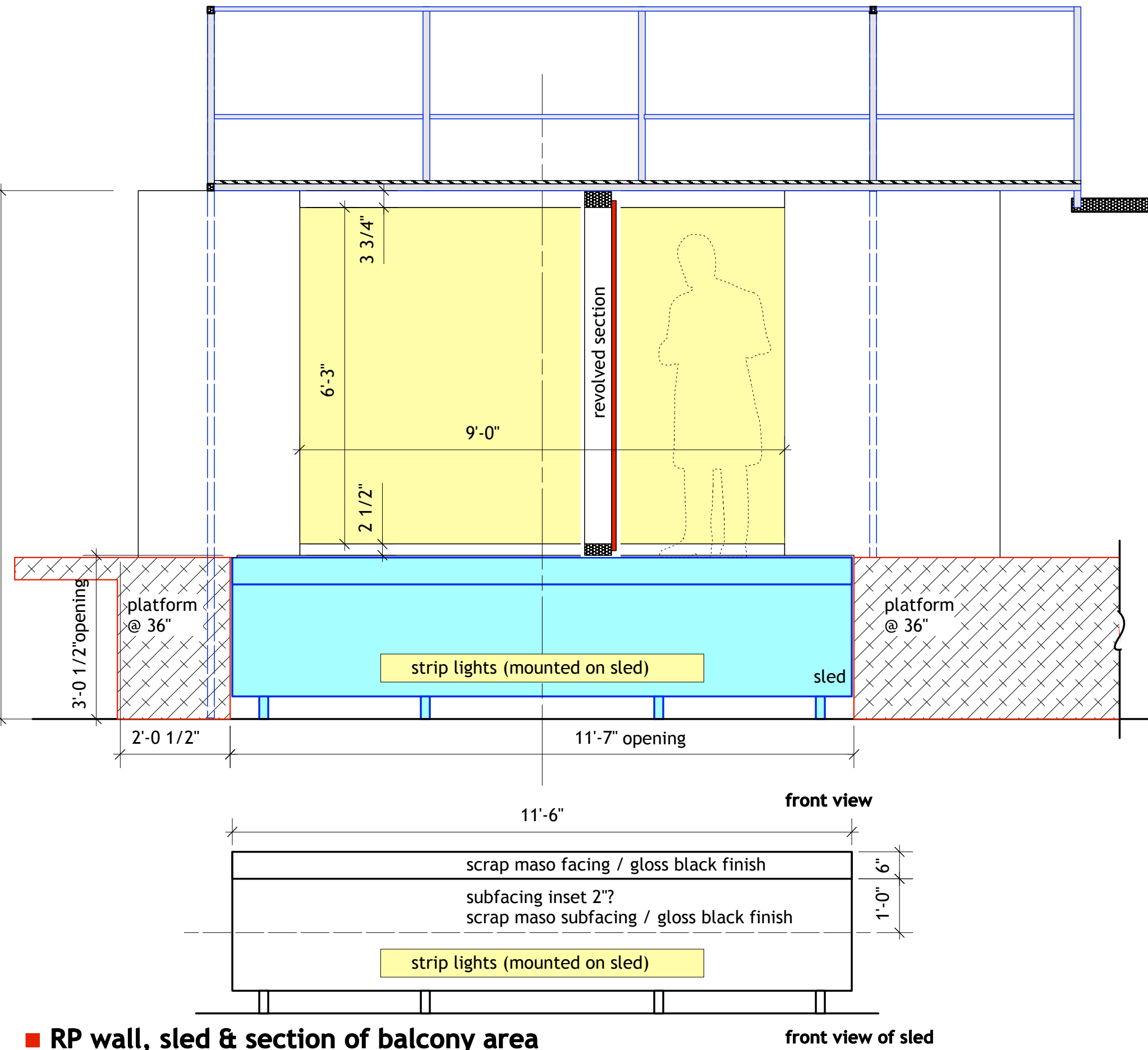
discuss ideas for rain event w/ eric
1 trap US of garage door for puppet, lift trap up for use

balcony facing

balcony facing notes
faux metal w/ faded emerald green paint finish
masonite w/ 1/4" masonite strips
soften/sand down the outside corners/edges
no grain
top of unit is out of sightlines, skin w/ scrap maso?

bottom view
1" circle x 3/16" thick at highest point, domed top w/ flat bottom
bag of 100 for \$10.00 (2 bags needed)

http://www.craftparts.com/316-wooden-domed-disc-circle-p-1485.html?cat_id=320
DD1000



RP wall, sled & section of balcony area

12.02 | what's new on plate H
- major balcony update/re-envisioning (all balcony views changed)
- RP-1 & RP-3 top lowered

12.10 | updates
- balcony updated
- RP wall updated, some cuts, some dimensions adjusted
- RP-6 is cut
- strip lights added to bottom of sled

out of the pan into the fire iowa '13 | **garage door, balcony & RP wall** | 1/2" = 1'-0" | monday, 12.10.12
dominique serrand, director | r. eric stone, scenic designer

plate **H**