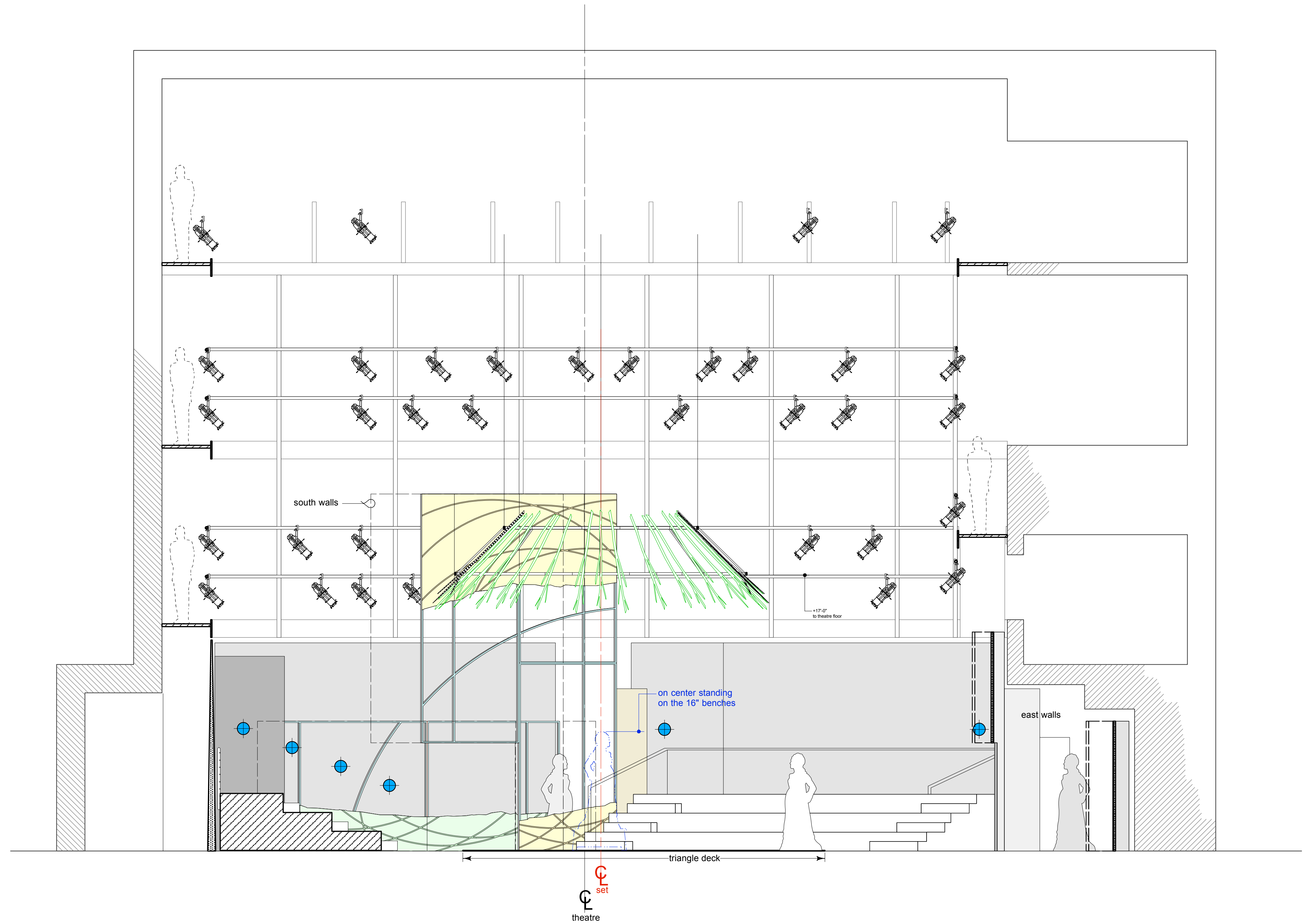


notes

156 seats (including 36 seats on the floor & 16 seats at the tops of aisles)
w. = wheelchair seating
see 1/2" GP for dimensions/layout of walls & seating bank lettering
no seating bank storage in venue

- drawing list**
- A ground plan
 - B cl section
 - C north walls
 - D south walls
 - E east walls
 - F deck layout
 - G the ring
 - H benches

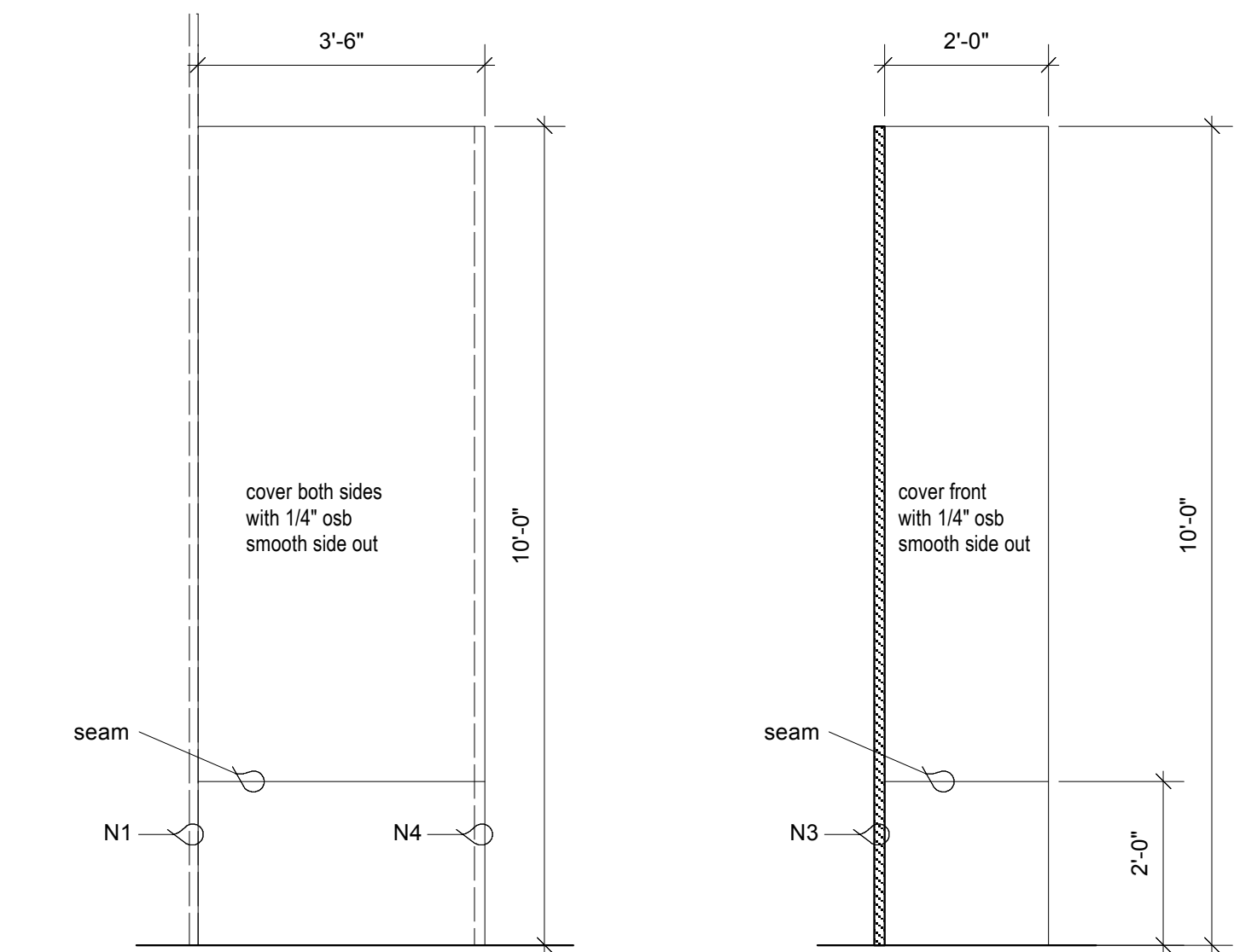


notes

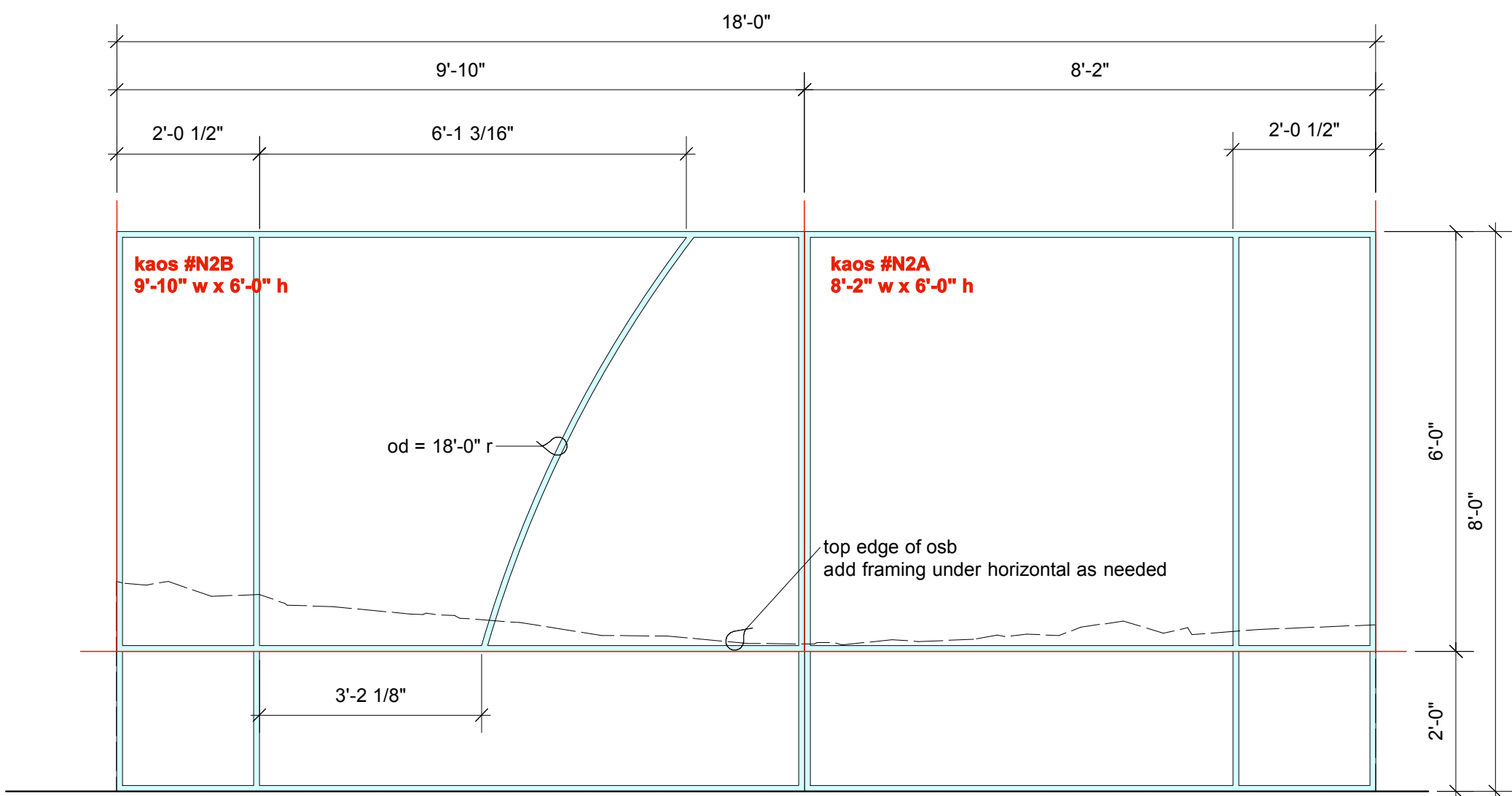
section is drawn from 1'-9" north of the CR line, through the center of the ring
lights shown on calwalks are representational
booms & floor mounts proposed are not included on this section

drawing list

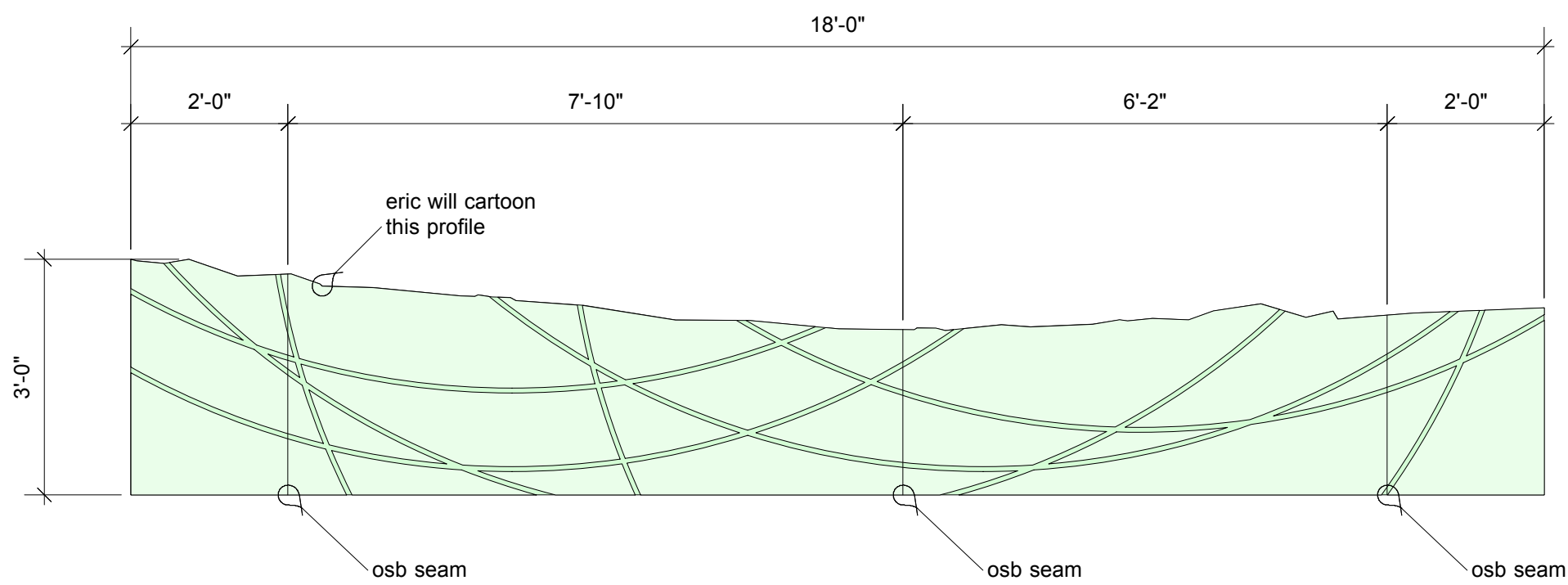
- A ground plan
- B cl section
- C north walls
- D south walls
- E east walls
- F deck layout
- G the ring
- H benches



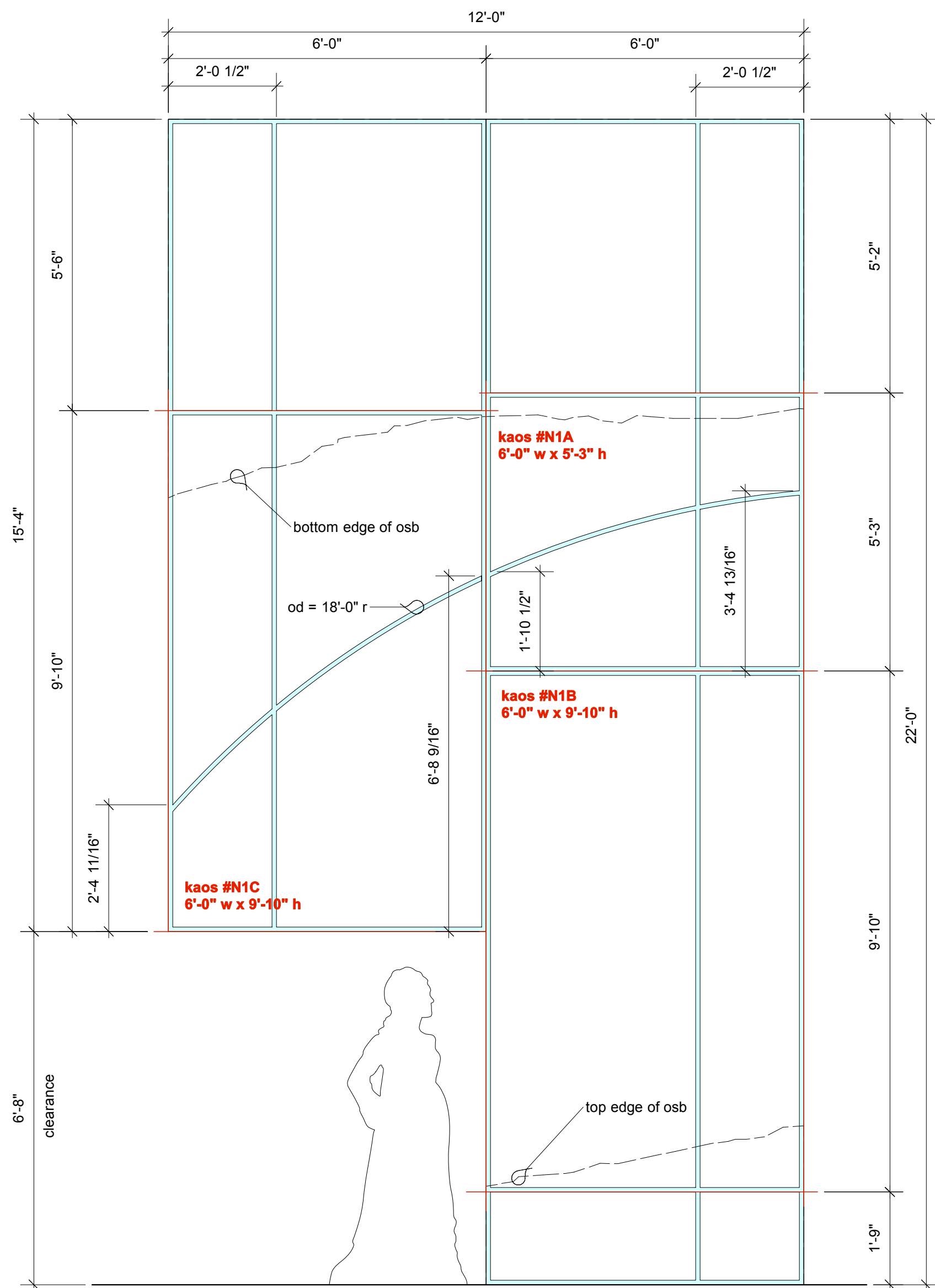
front view of N3 & N4



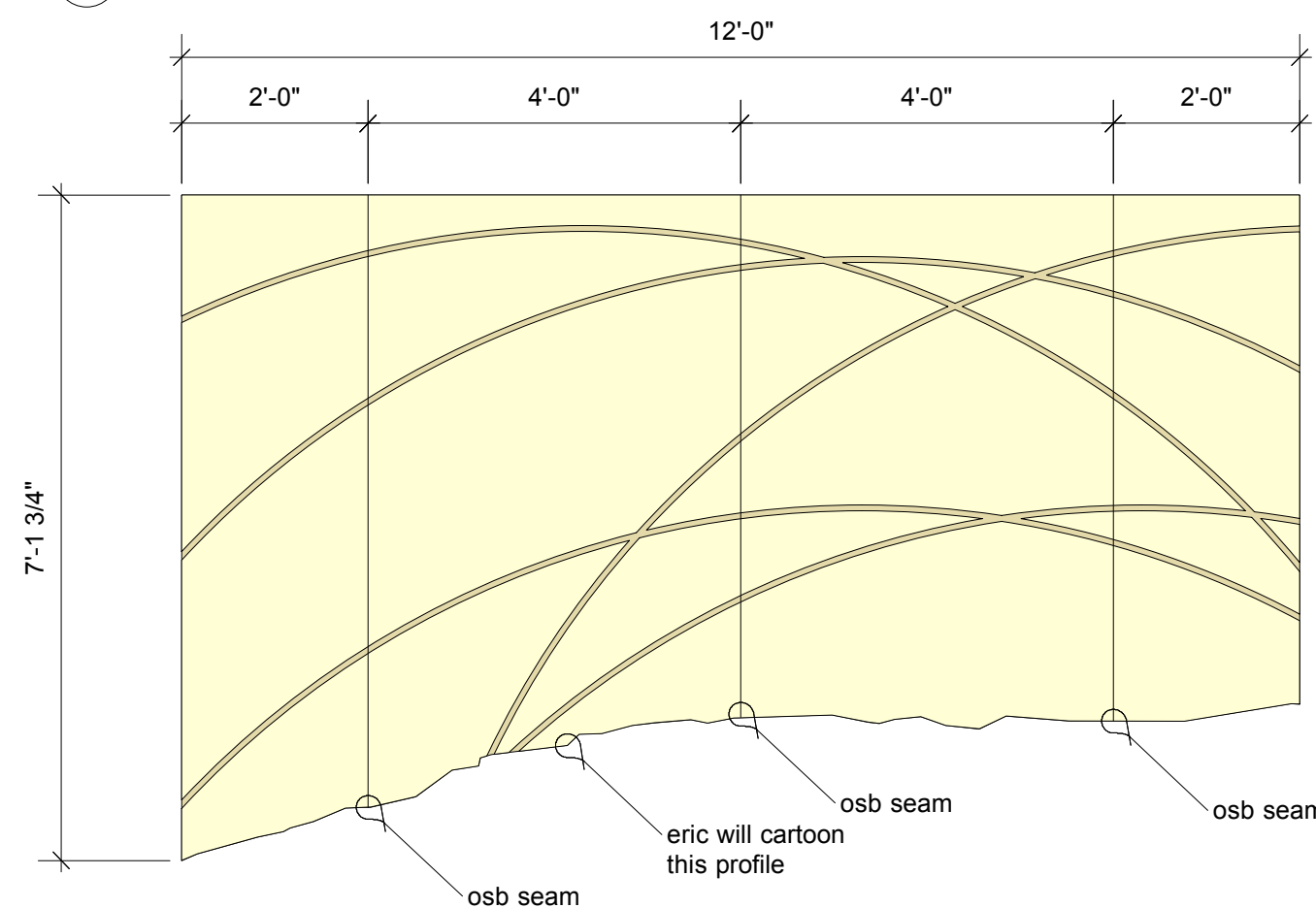
front view | framing of N2



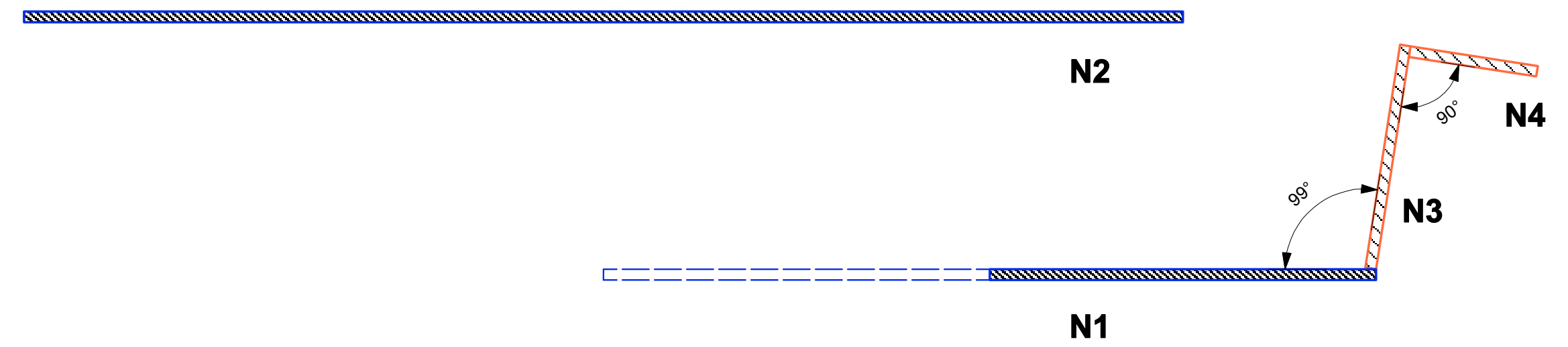
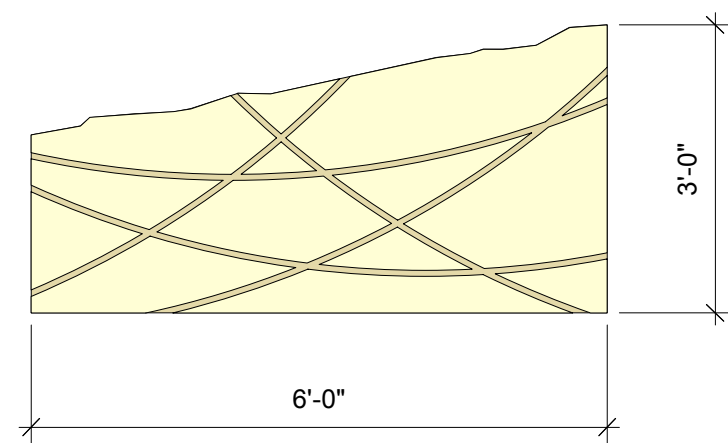
front view | osb for N2



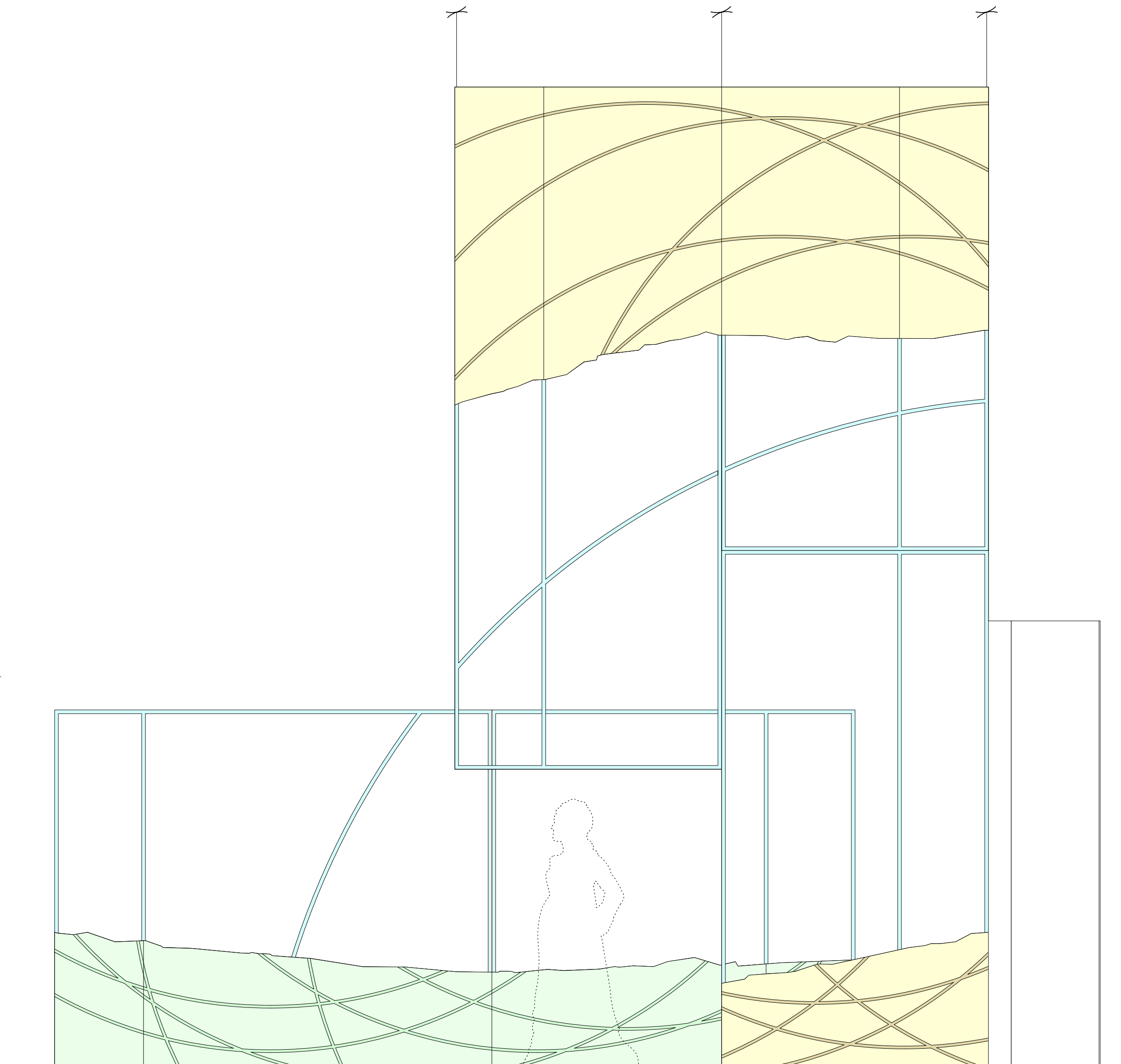
front view | framing for N1



front view | osb for N1



plan view of the NORTH walls



composite front view of the NORTH walls

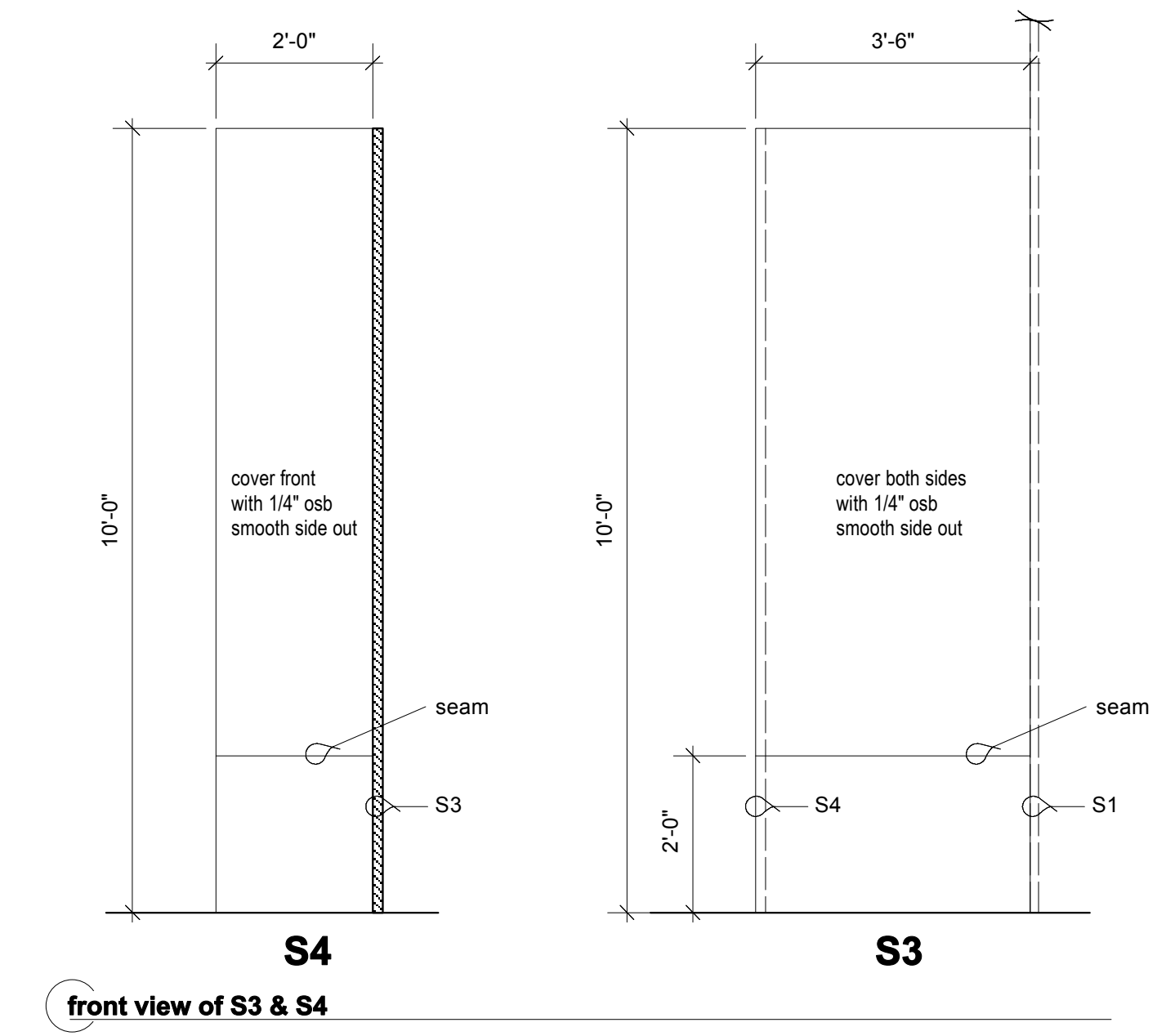
notes

framing
main walls are 1" x 2" metal frames
apply 1/4" luaun nailing strips onto front surfaces

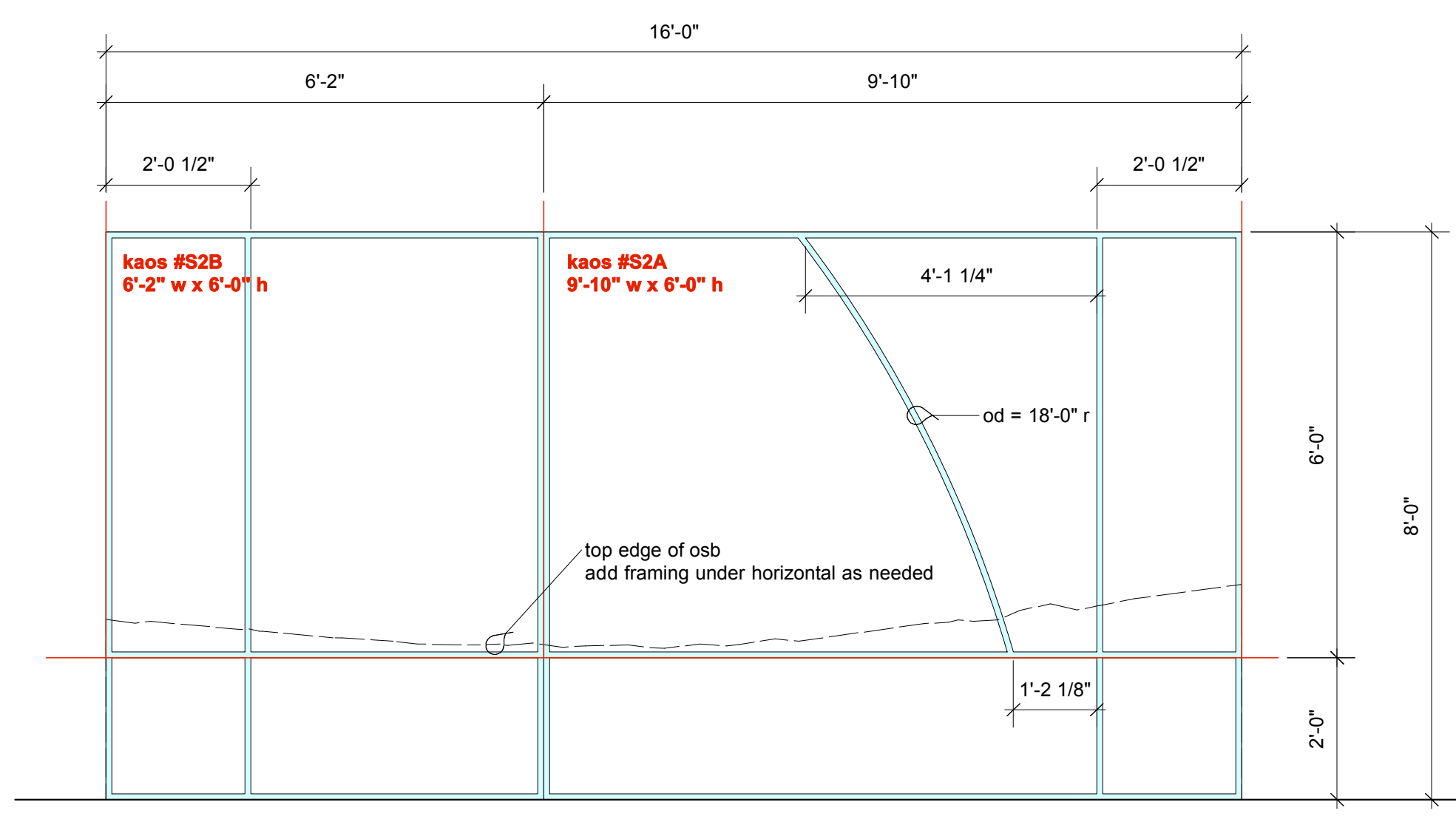
kaos
118" heavy black kaos is applied to luaun w/ wide crown staples
product from ROSEBRAND: <http://www.rosebrand.com>
\$65.45/yard, 22 yard roll, total price is \$1439.90
(there may be +/- 10% on the bolt, eric will adjust design if it is less)
layout of fabric is critical to get all of the pieces needed out of the 22 yard bolt

osb
1/4" osb sheeting, smooth side out
product from LOWE'S: #12206
\$5.87 per 4' x 8'
there are no black construction marks on these sheets, this is critical to the paint finish
osb areas are on top of the kaos fabric
arcs in osb are 1/16" x 3/4" routed curves, all arcs have a 10'-0" radius

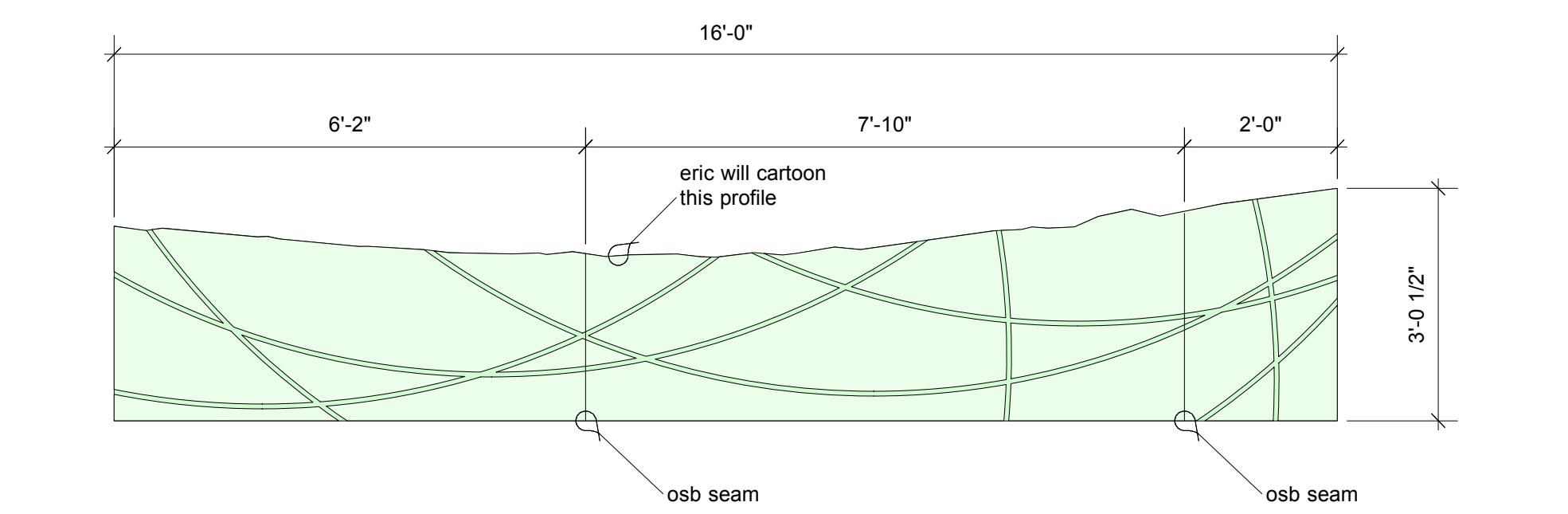
paint | glazes
black & red washes on osb, semi-gloss finish
do not use dye-based chalk lines or sharpie markers for construction layout
gloss black on steel/luaun prior to applying the kaos fabric



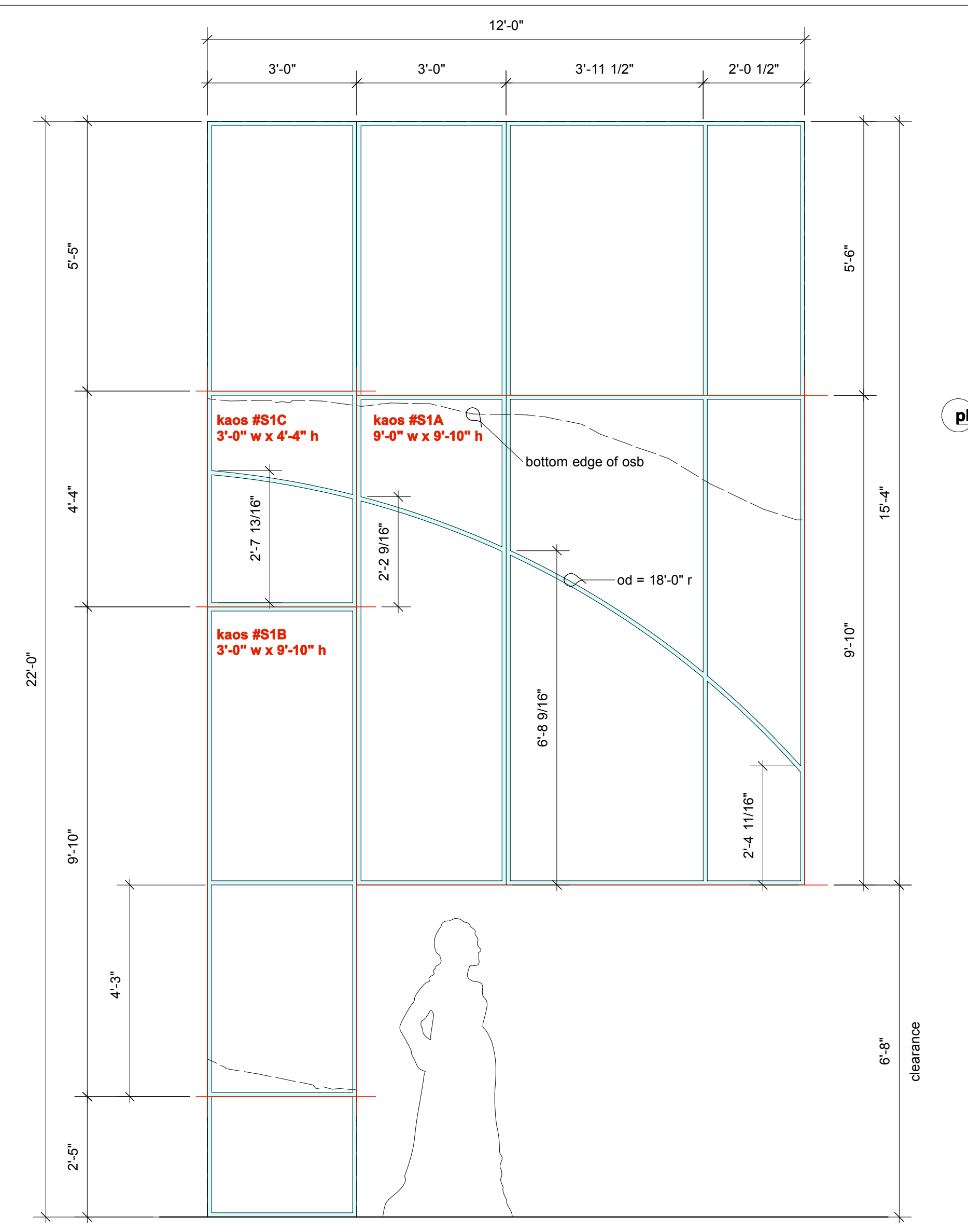
front view of S3 & S4



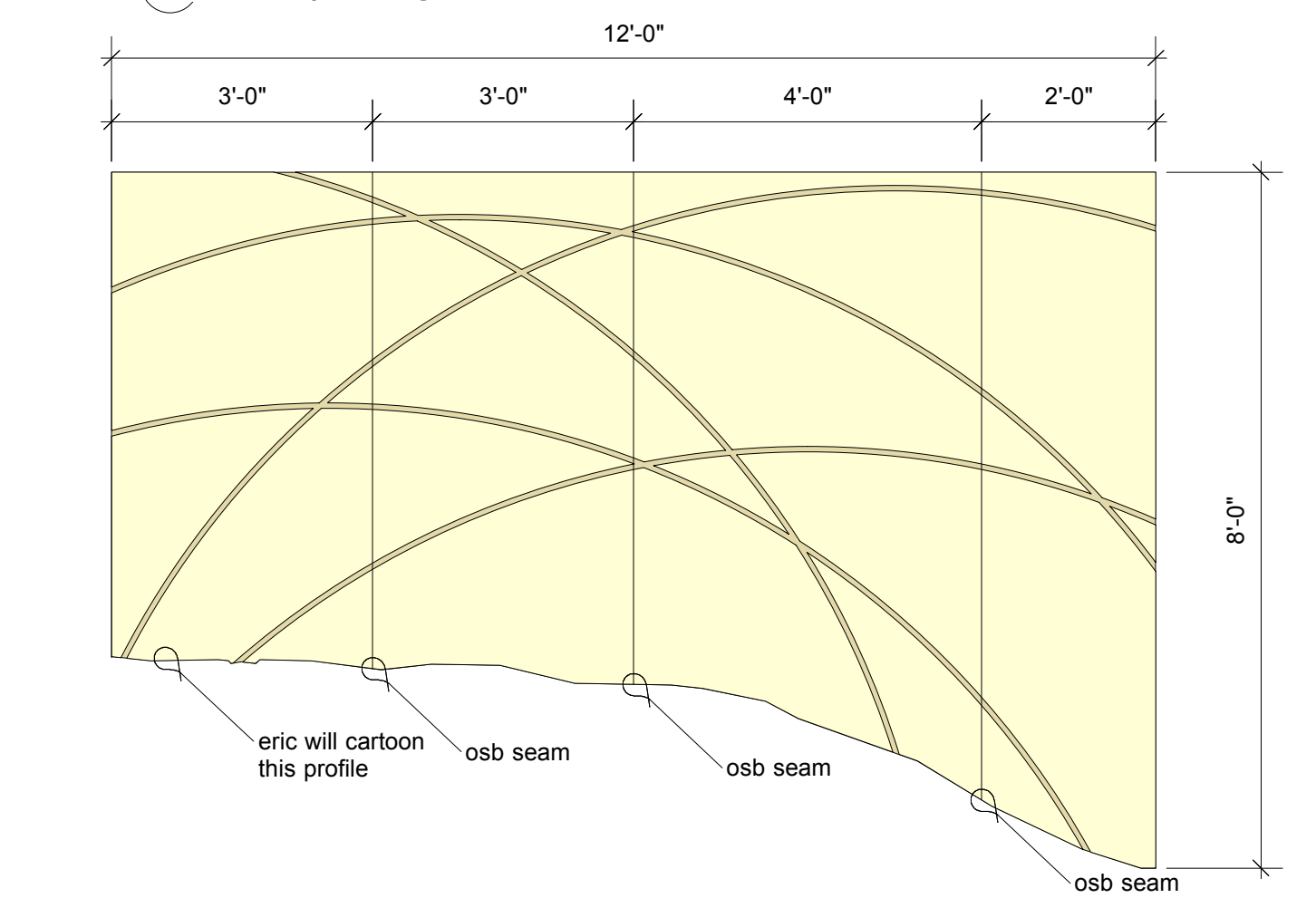
front view | framing of S2



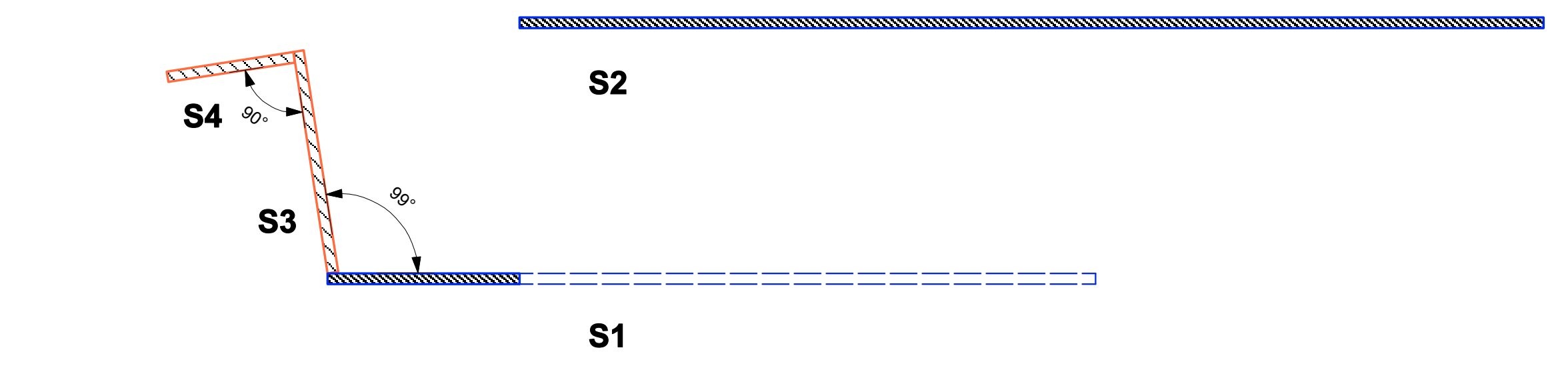
front view | osb for S2



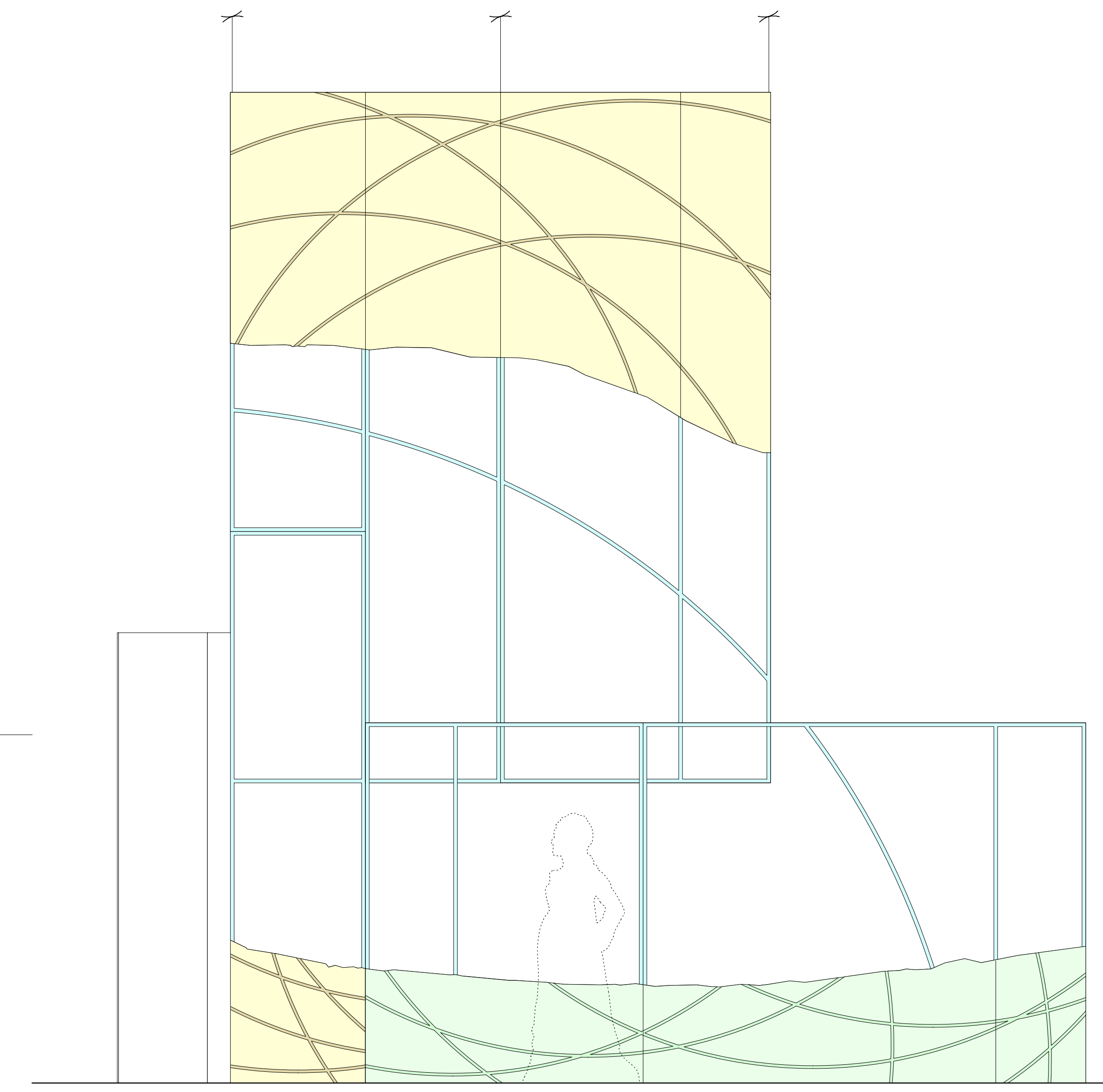
front view | framing of S1



front view | osb for S1



plan view of the SOUTH walls



composite front view of the SOUTH walls

notes

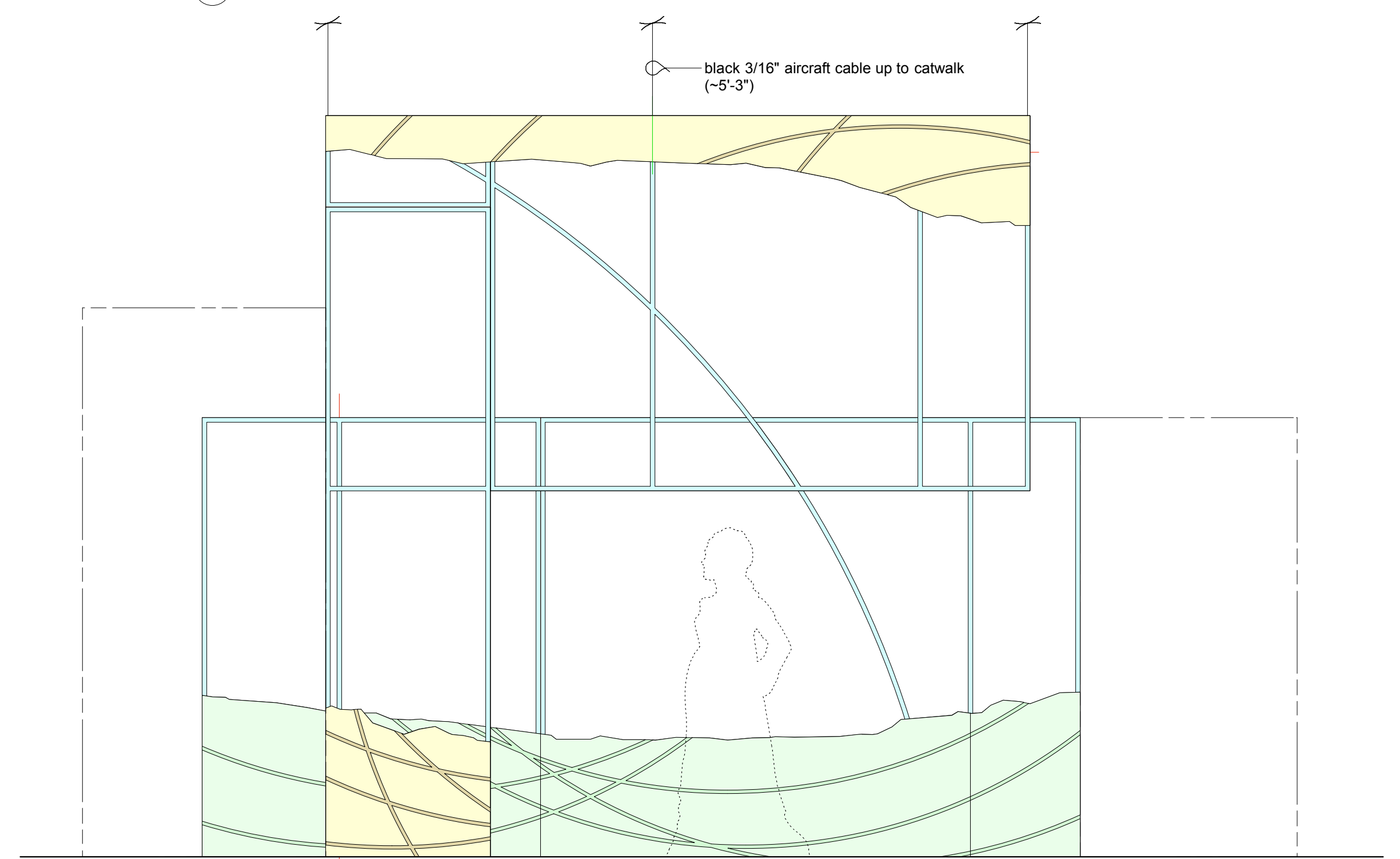
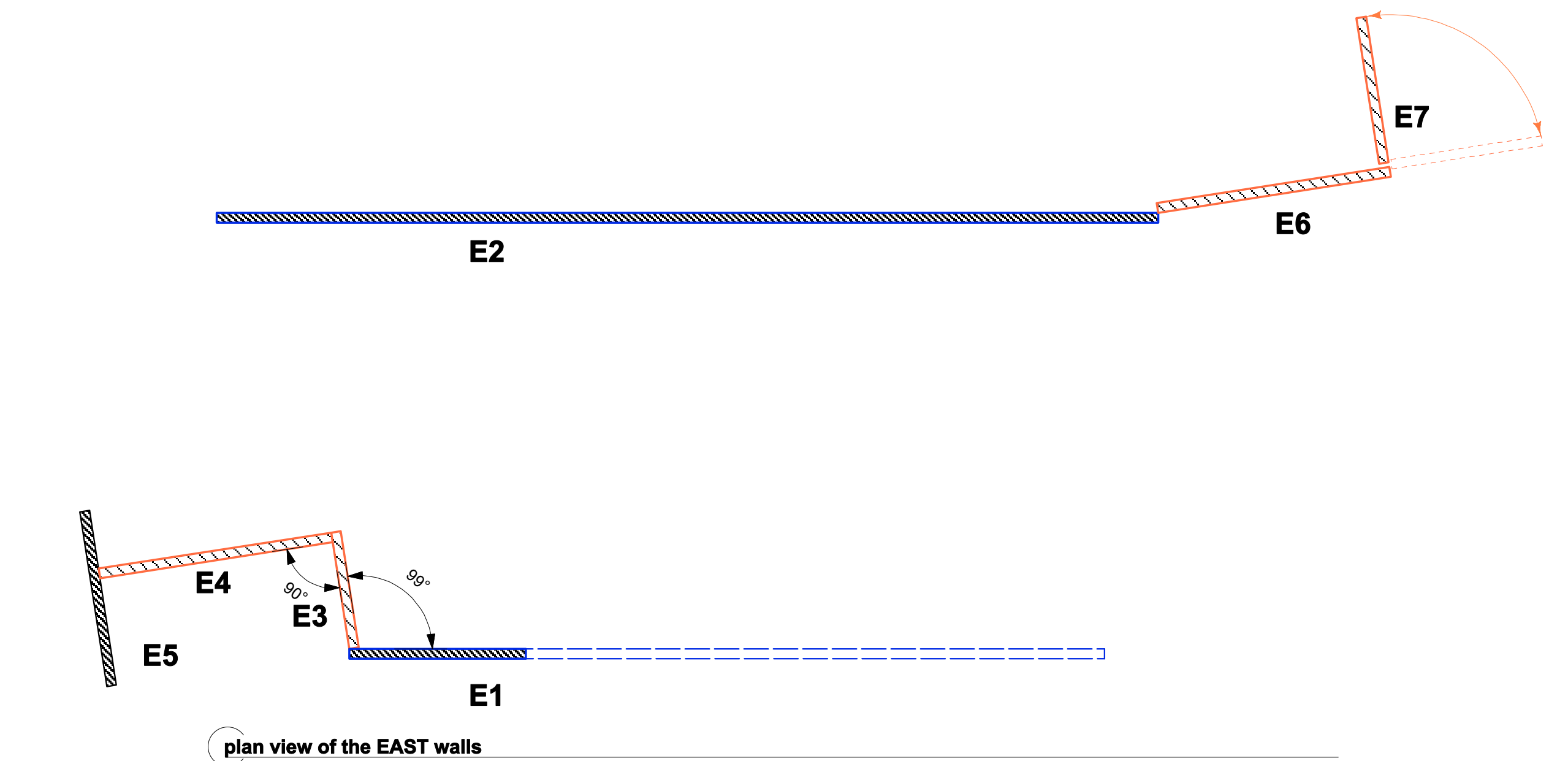
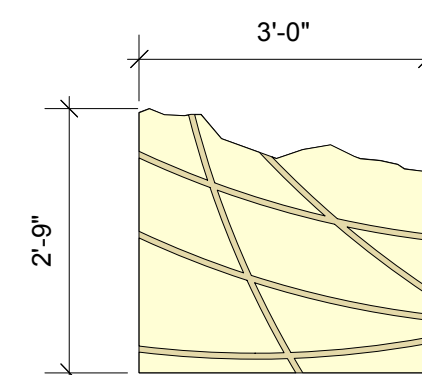
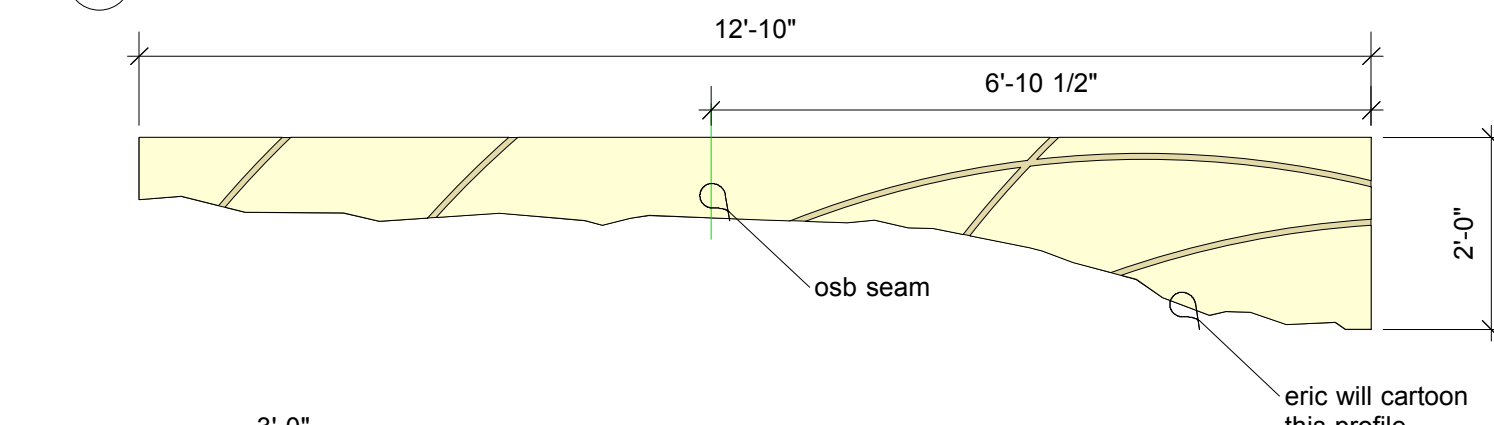
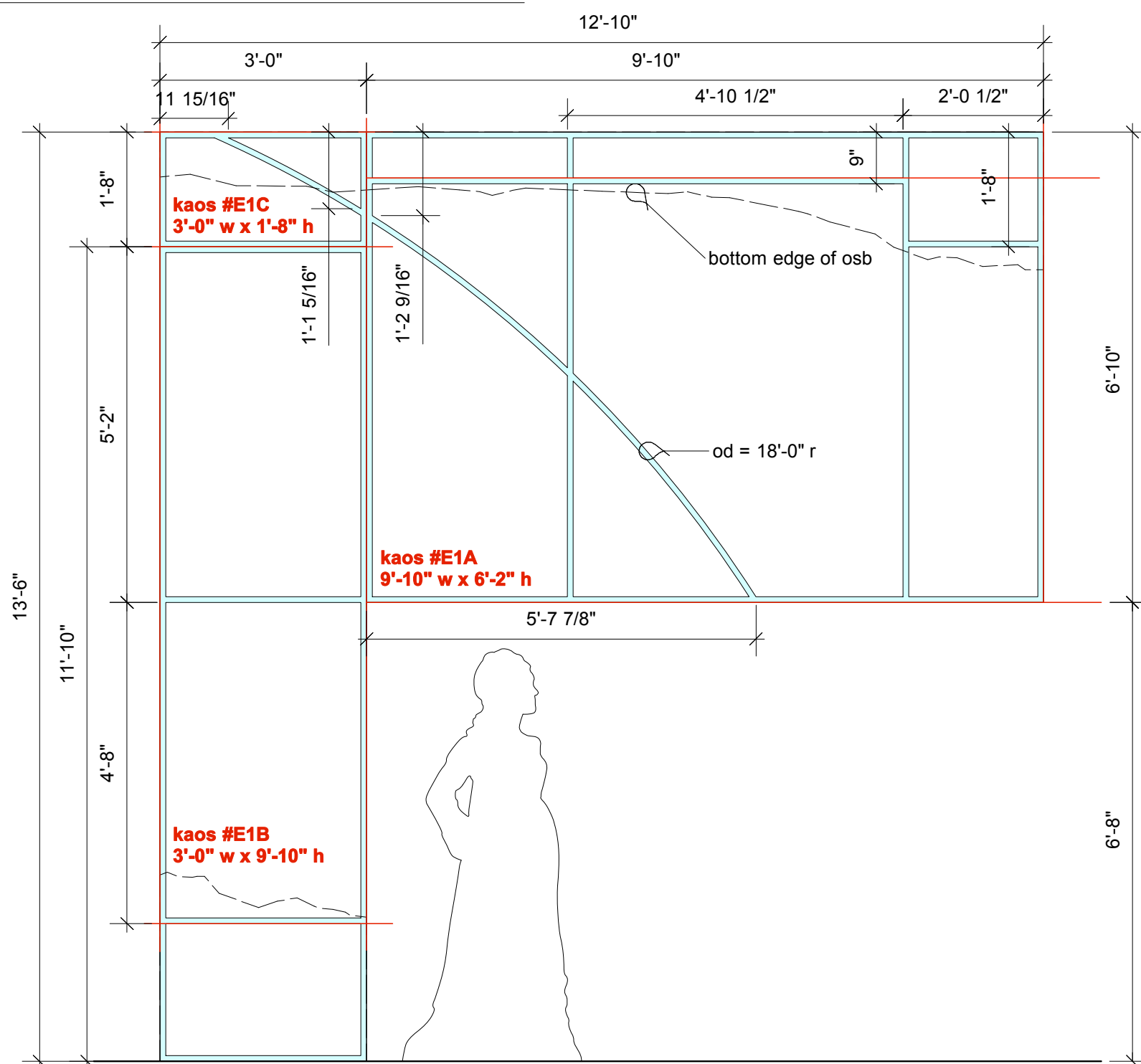
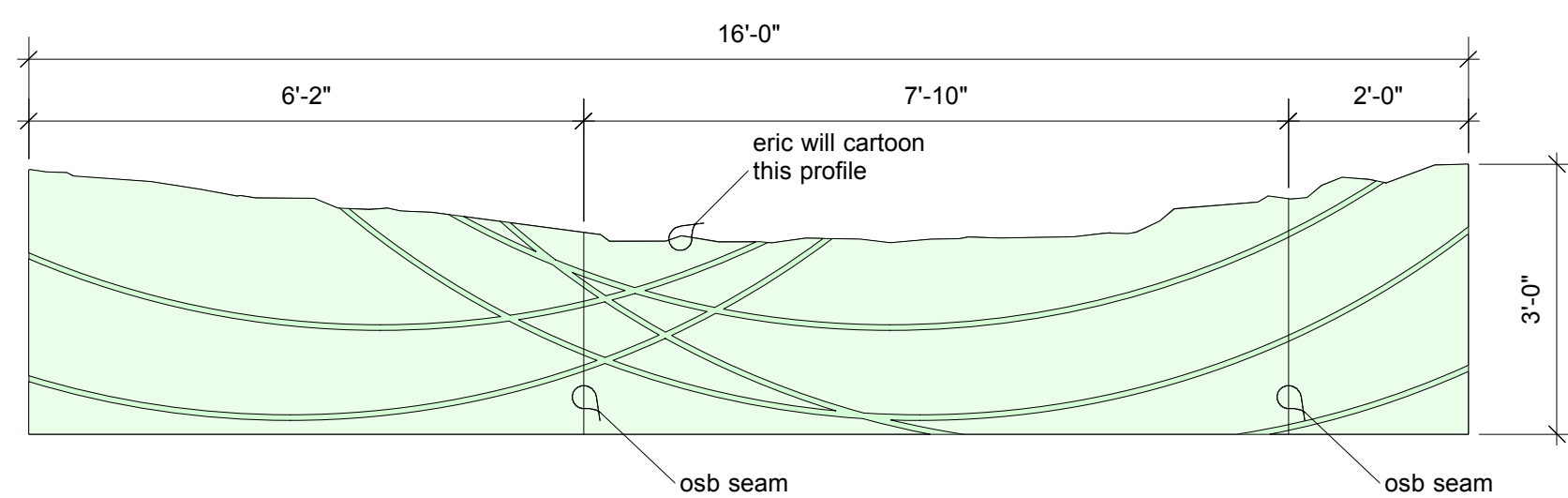
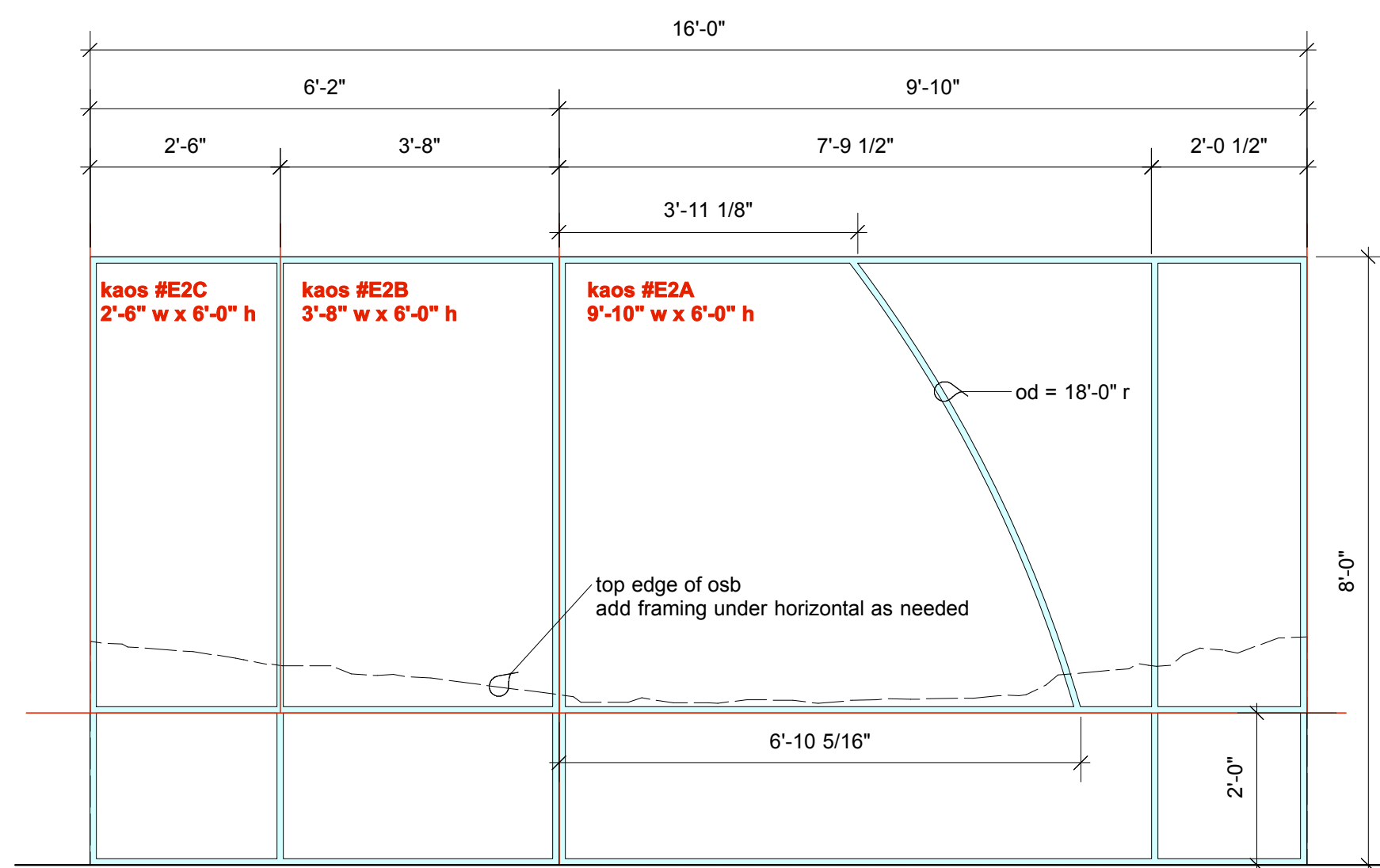
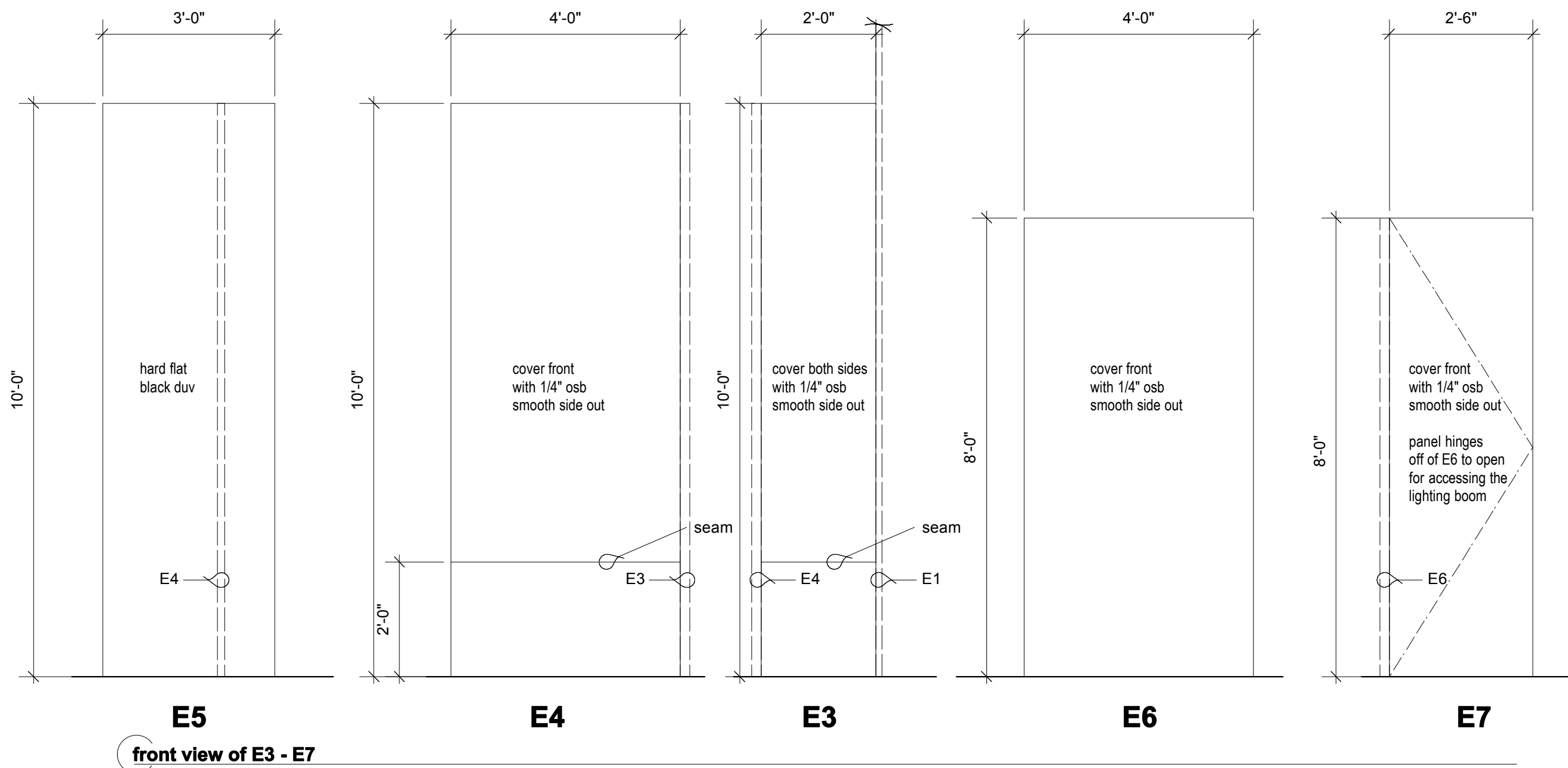
framing
main walls are 1" x 2" metal frames
apply 1/4" luaun nailing strips onto front surfaces

kaos
118" heavy black kaos is applied to luaun w/ wide crown staples
product from ROSEBRAND: <http://www.rosebrand.com>
\$65.45/yd, 22 yard roll, total price is \$1439.90
(there may be +/- 10% on the bolt, eric will adjust design if it is less)
layout of fabric is critical to get all of the pieces needed out of the 22 yard bolt

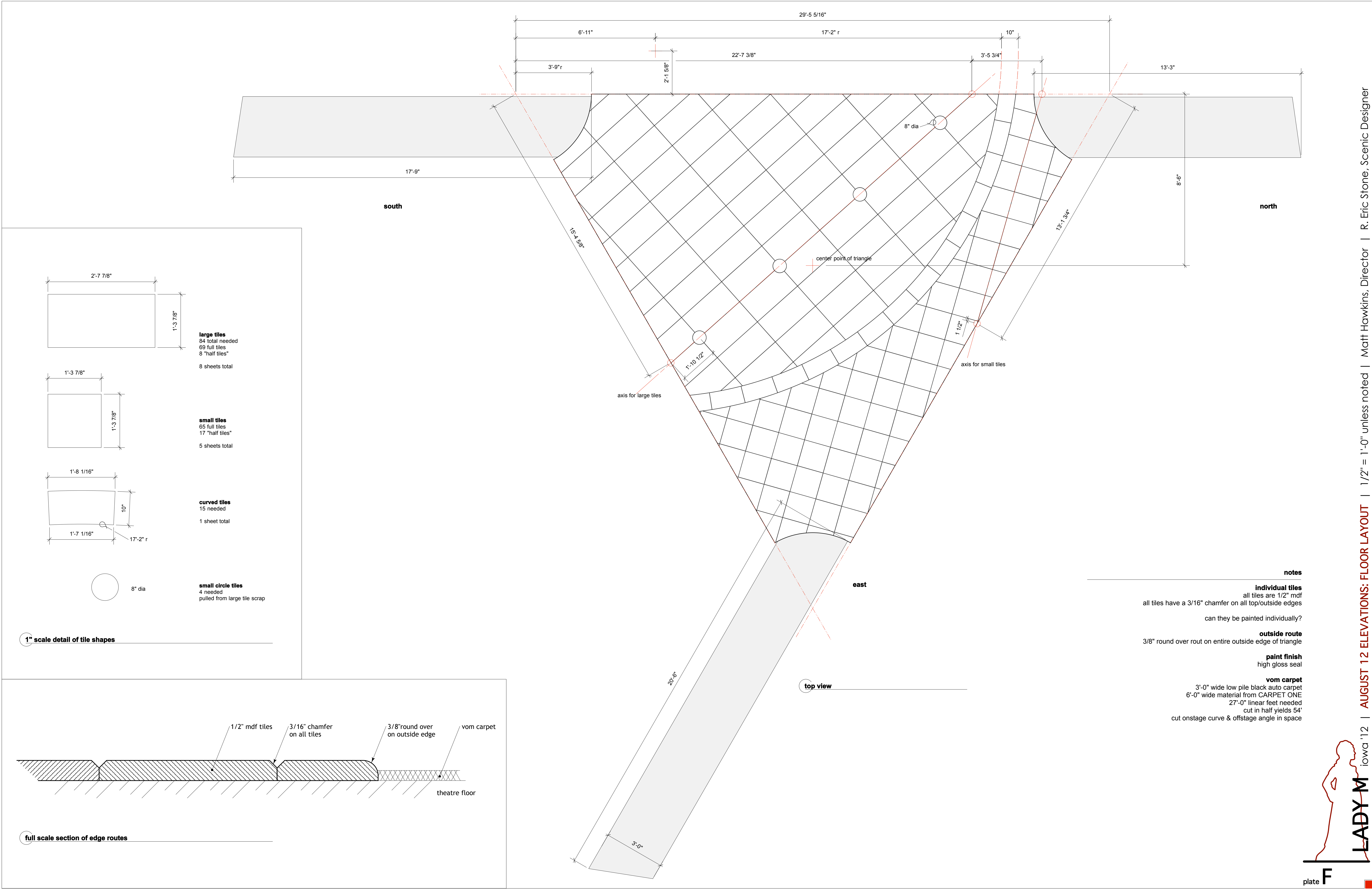
osb
1/4" osb sheeting, smooth side out
product from LOWE'S: #12206
\$5.87 per 4' x 8'

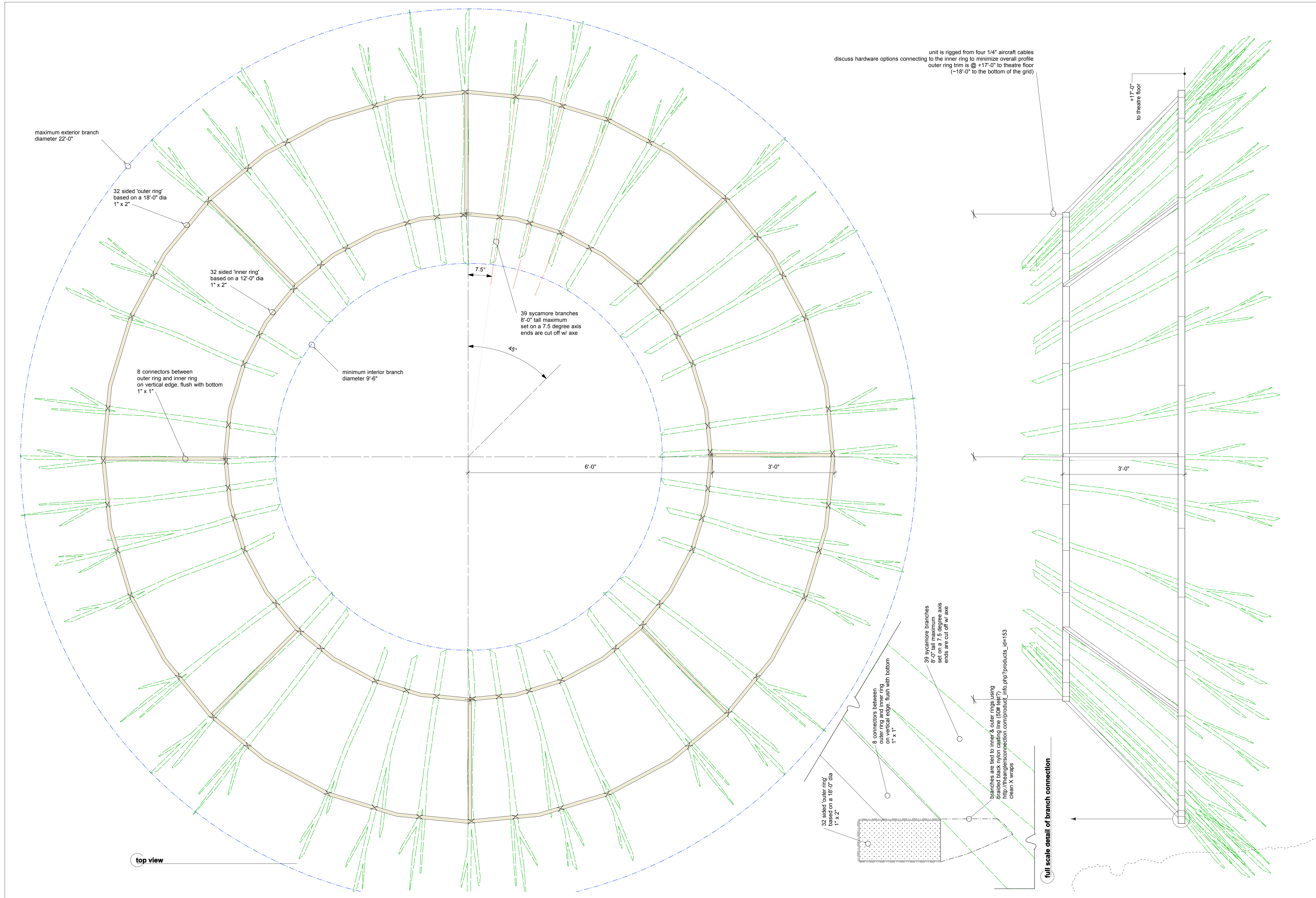
there are no black construction marks on these sheets, this is critical to the paint finish
osb areas are on top of the kaos fabric
arcs in osb are 1/16" x 3/4" routed curves, all arcs have a 10'-0" radius

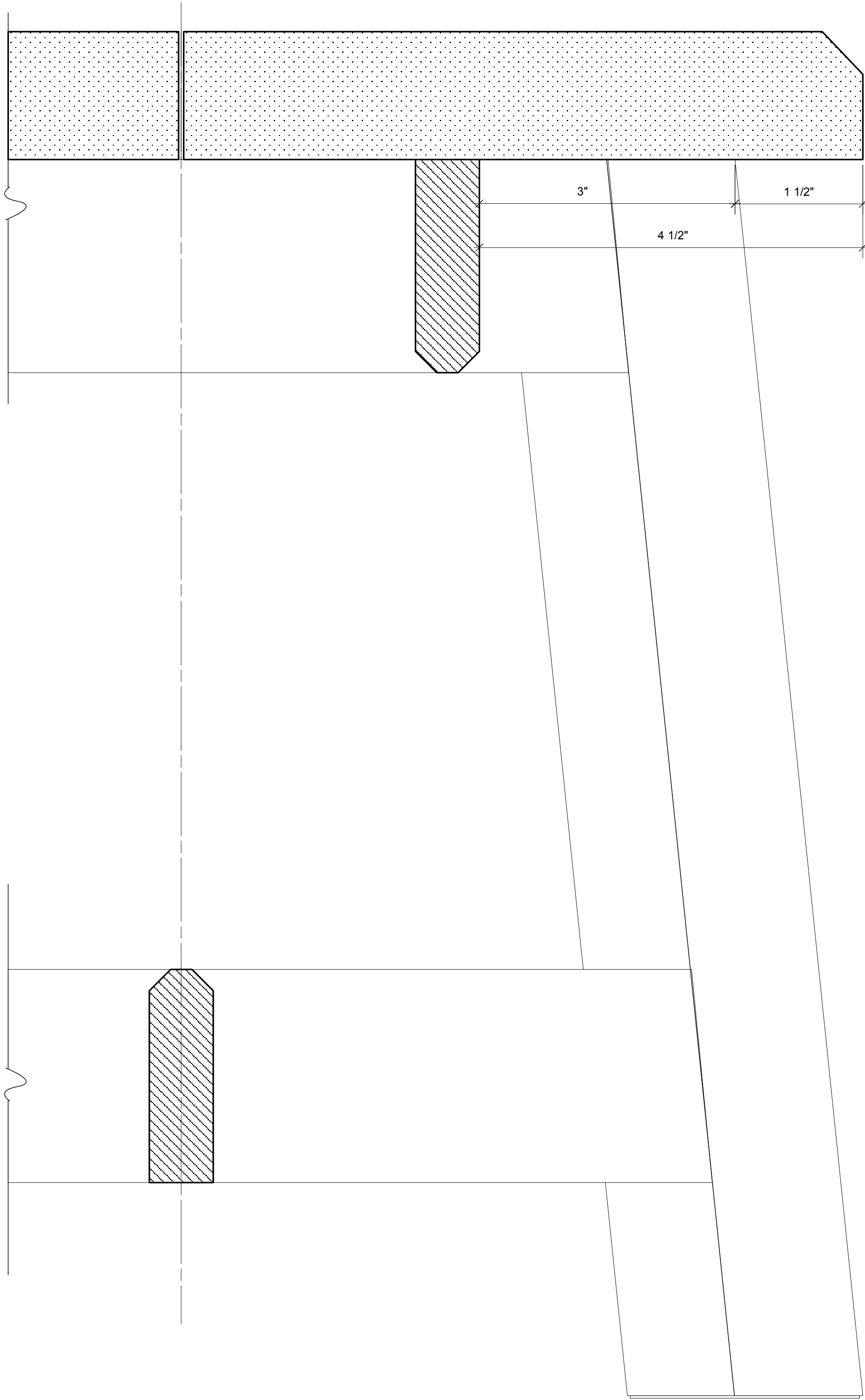
paint | glazes
black & red washes on osb, semi-gloss finish
do not use dye-based chalk lines or sharpie markers for construction layout
gloss black on steel/luaun prior to applying the kaos fabric



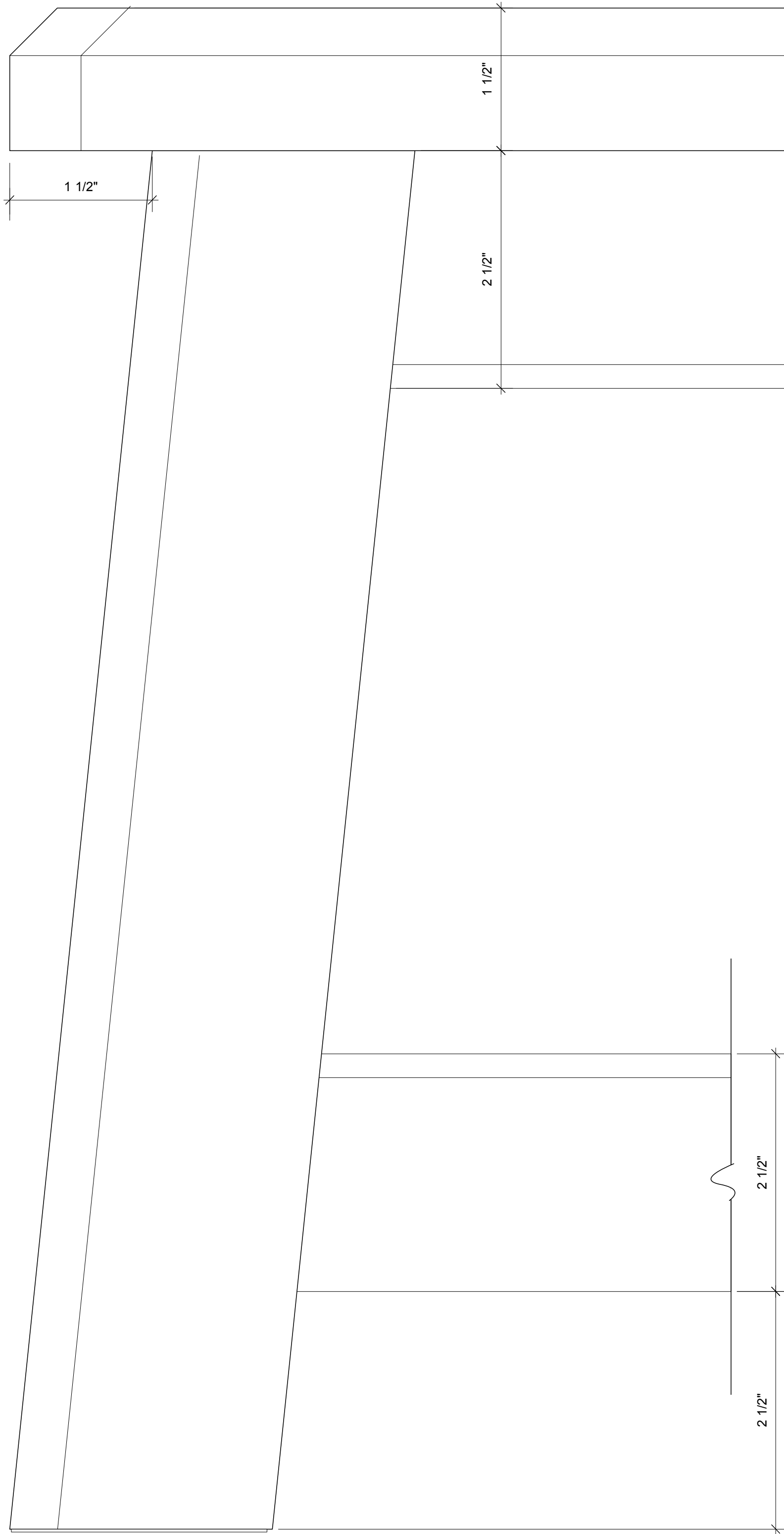
- notes**
- framing**
 - main walls are 1" x 2" metal frames
 - apply 1/4" luaun nailing strips onto front surfaces
 - kaos**
 - 118" heavy black kaos is applied to luaun w/ wide crown staples
 - product from ROSEBRAND: <http://www.rosebrand.com>
 - \$65.45/yard, 22 yard roll, total price is \$1439.90
 - (there may be +/- 10% on the bolt, eric will adjust design if it is less)
 - layout of fabric is critical to get all of the pieces needed out of the 22 yard bolt
 - osb**
 - 1/4" osb sheeting, smooth side out
 - product from LOWE'S: #12206
 - \$5.87 per 4' x 8'
 - there are no black construction marks on these sheets, this is critical to the paint finish
 - osb areas are on top of the kaos fabric
 - arcs in osb are 1/16" x 3/4" routed curves, all arcs have a 10'-0" radius
 - paint | glazes**
 - black & red washes on osb, semi-gloss finish
 - do not use dye-based chalk lines or sharpie markers for construction layout
 - gloss black on steel/luaun prior to applying the kaos fabric



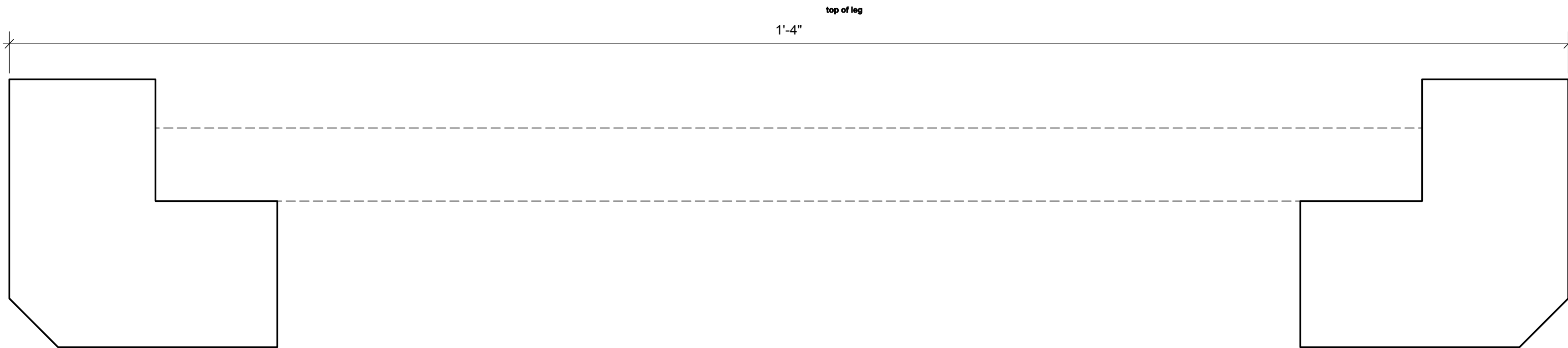




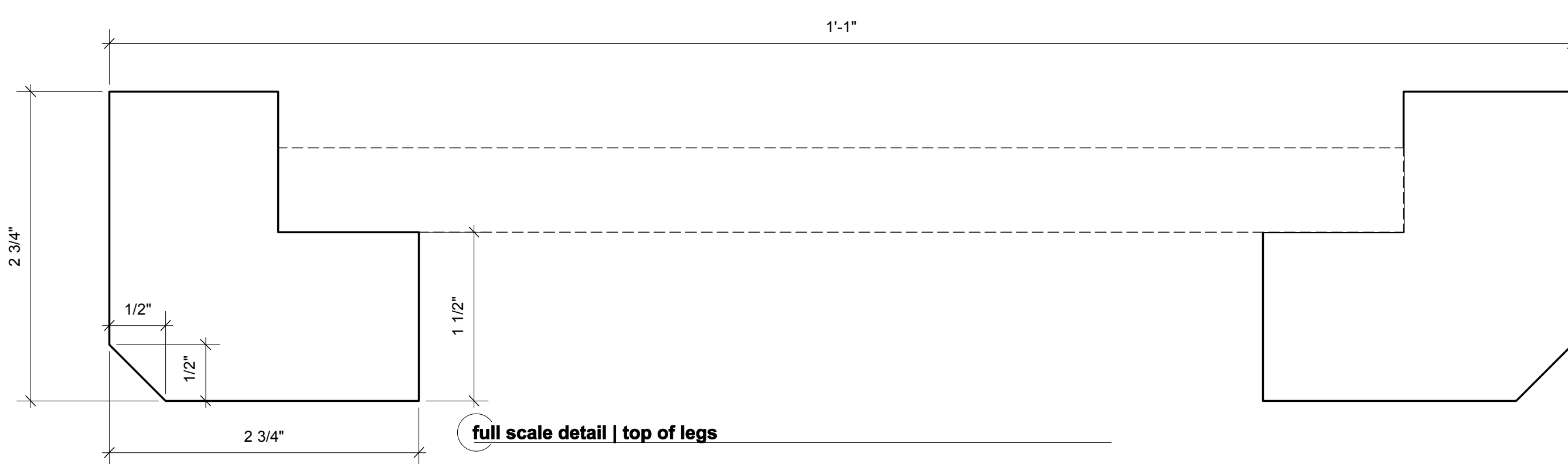
full scale detail | center section



full scale detail | side view



full scale detail | base of legs



full scale detail | top of legs

